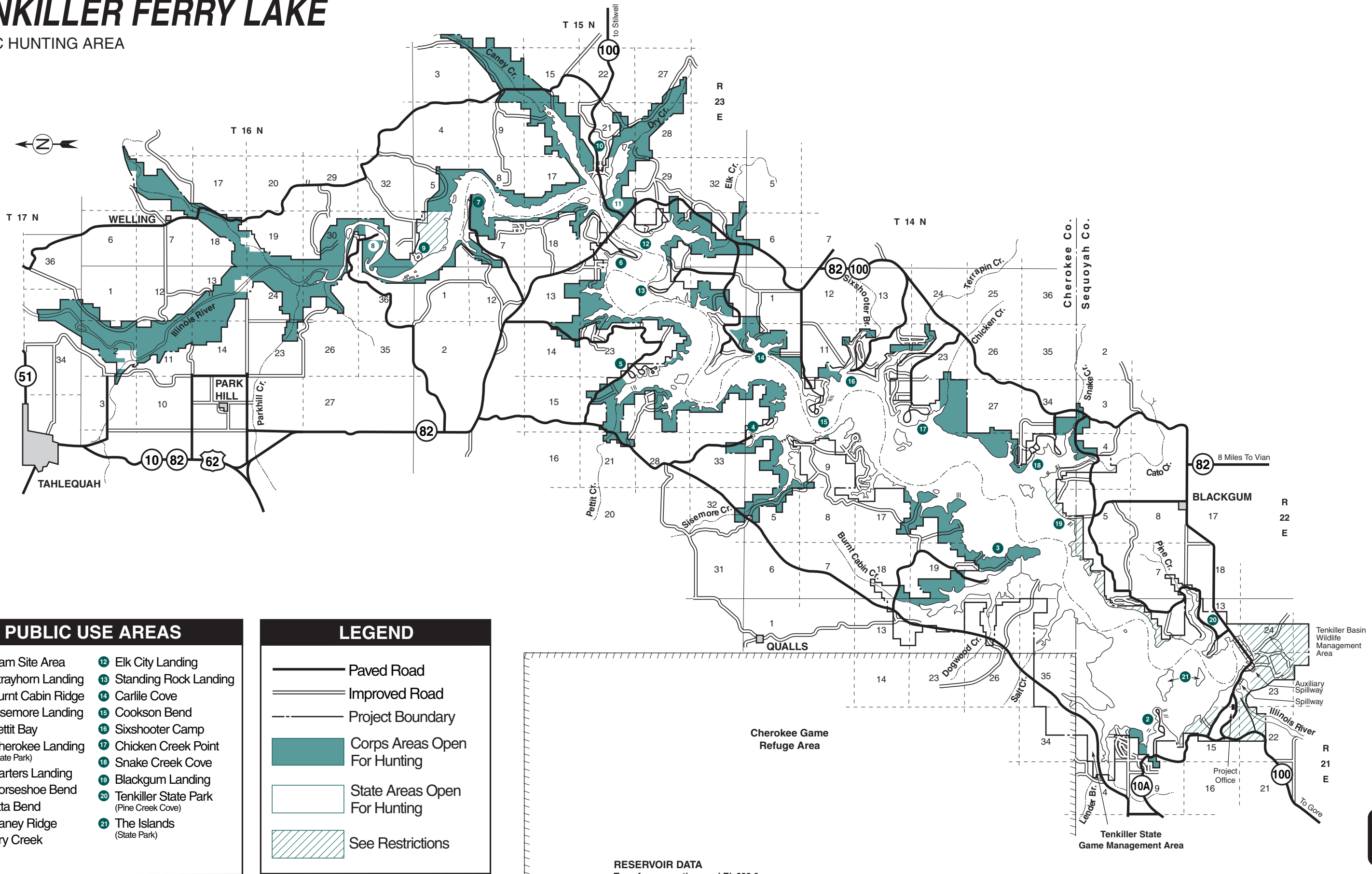


TENKILLER FERRY LAKE

PUBLIC HUNTING AREA

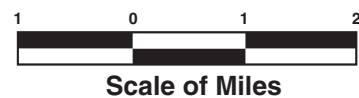


PUBLIC USE AREAS

- | | |
|---------------------------------|---|
| 1 Dam Site Area | 12 Elk City Landing |
| 2 Strayhorn Landing | 13 Standing Rock Landing |
| 3 Burnt Cabin Ridge | 14 Carlile Cove |
| 4 Sisemore Landing | 15 Cookson Bend |
| 5 Pettit Bay | 16 Sixshooter Camp |
| 6 Cherokee Landing (State Park) | 17 Chicken Creek Point |
| 7 Carters Landing | 18 Snake Creek Cove |
| 8 Horseshoe Bend | 19 Blackgum Landing |
| 9 Etta Bend | 20 Tenkiller State Park (Pine Creek Cove) |
| 10 Caney Ridge | 21 The Islands (State Park) |
| 11 Dry Creek | |

LEGEND

- | | |
|--|------------------------------|
| | Paved Road |
| | Improved Road |
| | Project Boundary |
| | Corps Areas Open For Hunting |
| | State Areas Open For Hunting |
| | See Restrictions |



RESERVOIR DATA
 Top of conservation pool El. 632.0
 150 shoreline miles at El. 632.0
 Total project land & water acreage 30634



US Army Corps of Engineers
 Tulsa District