
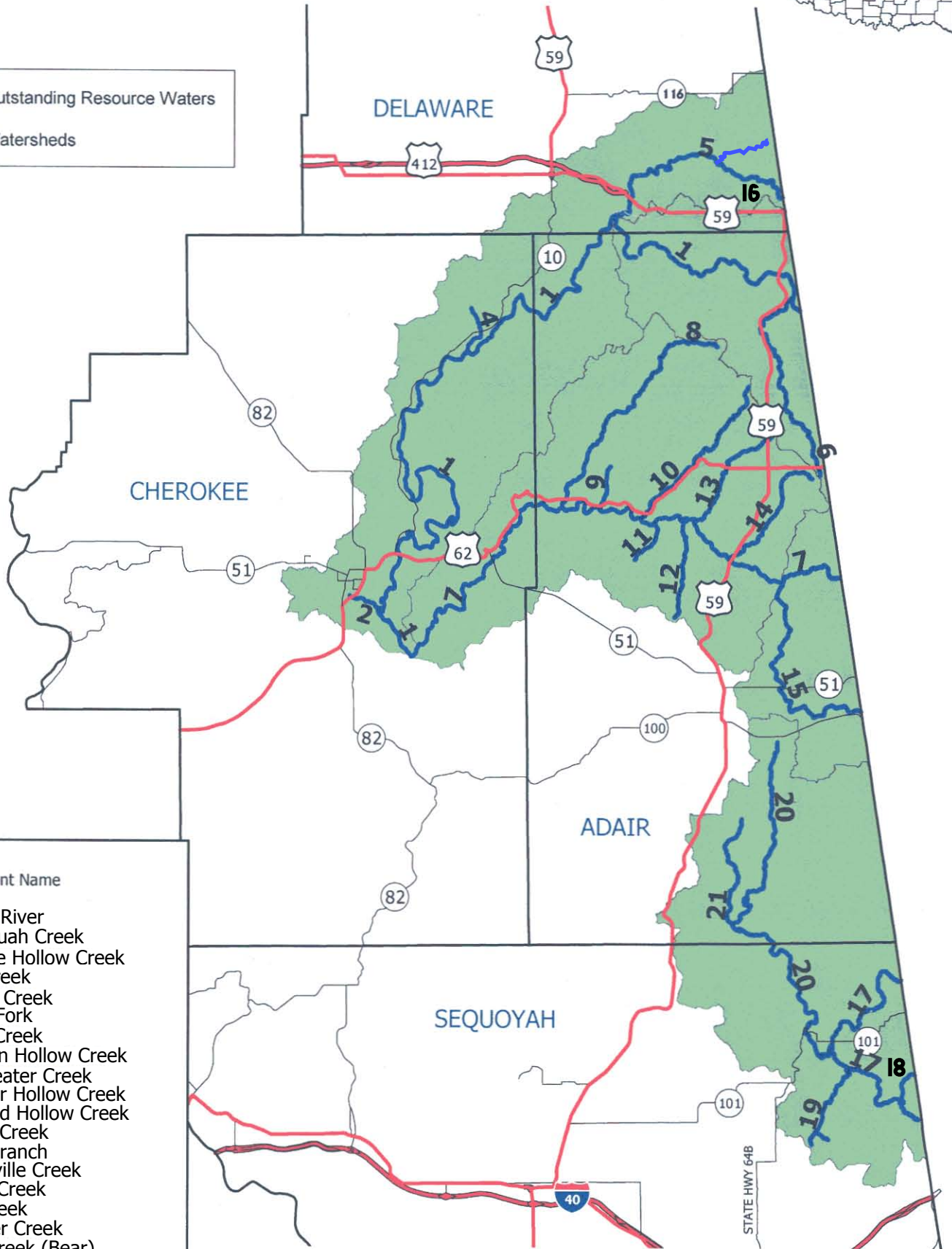


# Outstanding Resource Waters - Northeast



 Outstanding Resource Waters  
 Watersheds

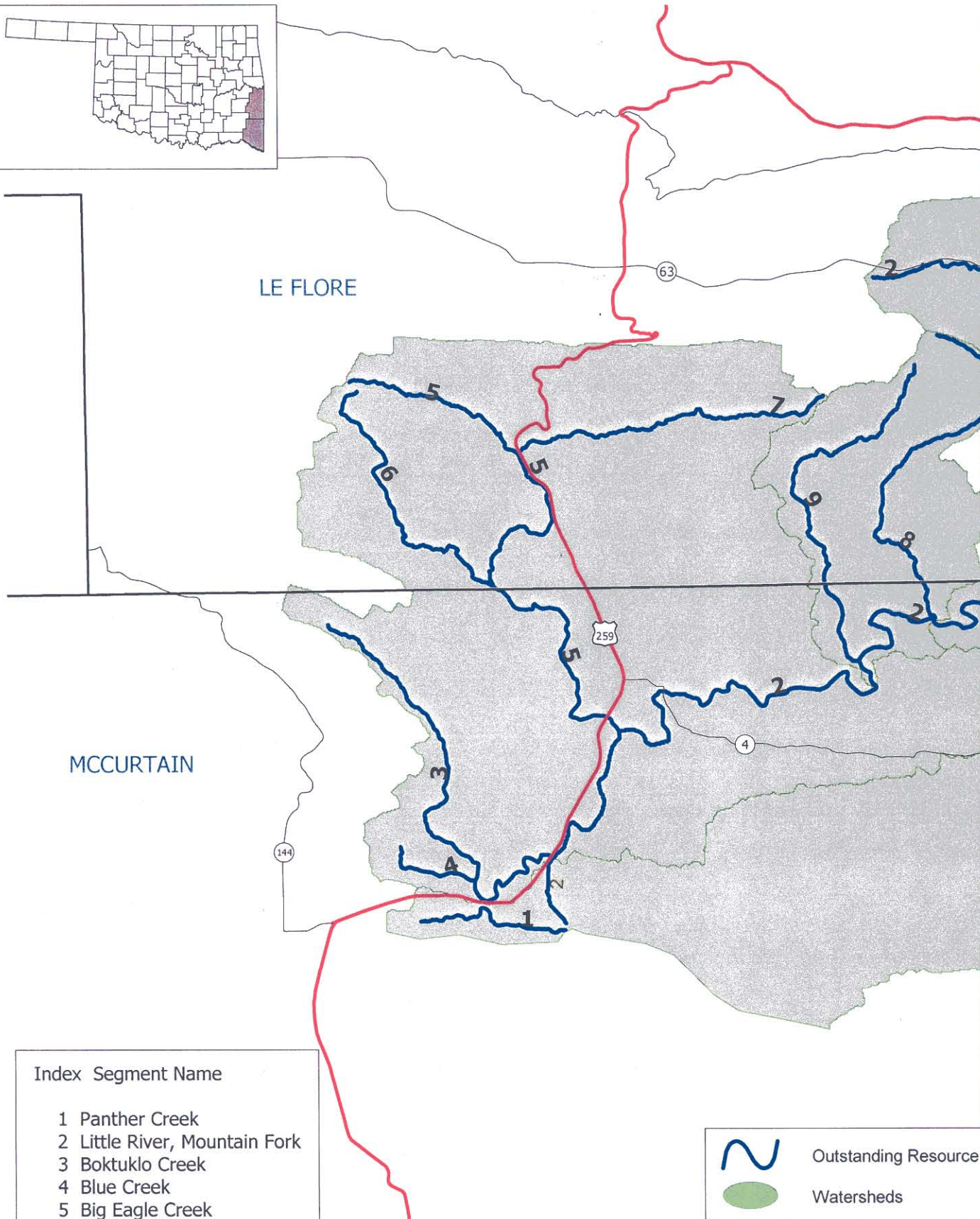
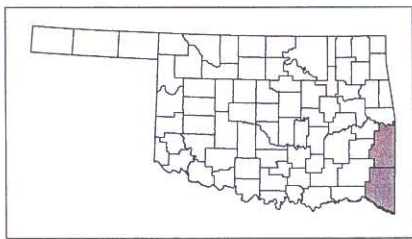


Index	Segment Name
1	Illinois River
2	Tahlequah Creek
4	Peavine Hollow Creek
5	Flint Creek
6	Ballard Creek
7	Baron Fork
8	Tyner Creek
9	Denison Hollow Creek
10	Peachater Creek
11	Scraper Hollow Creek
12	England Hollow Creek
13	Green Creek
14	Shell Branch
15	Evansville Creek
16	Sager Creek
17	Lee Creek
18	Webber Creek
19	Briar Creek (Bear)
20	Little Lee Creek
21	Jenkins Creek

**Enclosure 1**



# Outstanding Resource Waters - Southeast



**Index Segment Name**

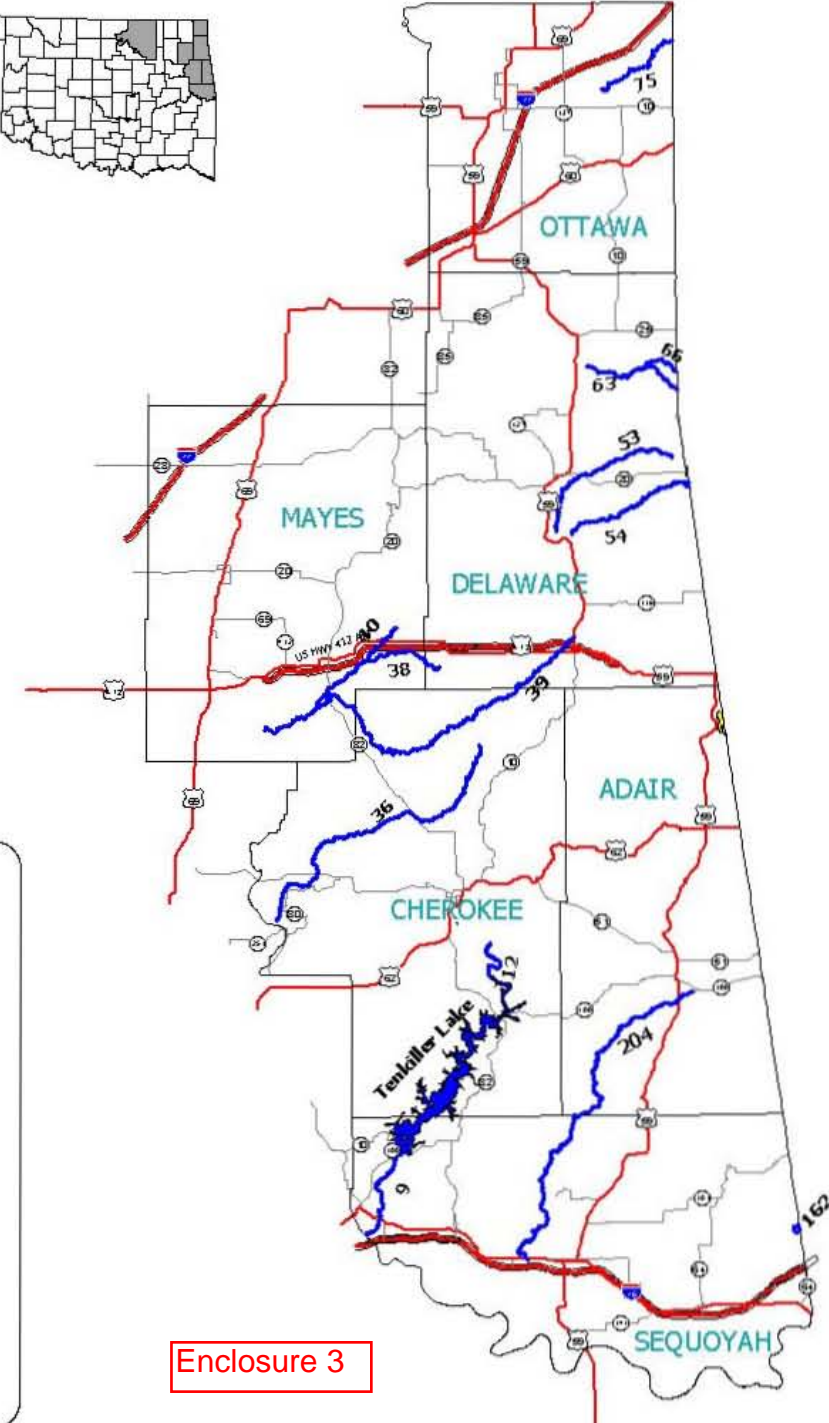
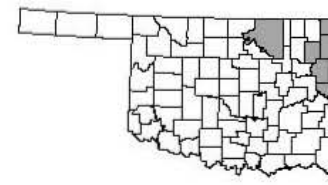
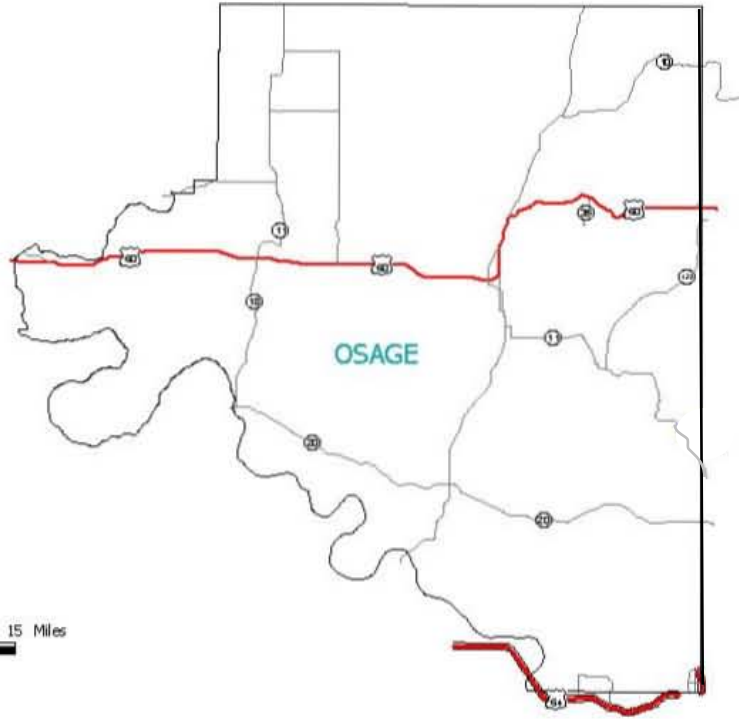
- 1 Panther Creek
- 2 Little River, Mountain Fork
- 3 Boktuklo Creek
- 4 Blue Creek
- 5 Big Eagle Creek
- 6 Little Eagle Creek
- 7 Cucumber Creek
- 8 Cow Creek
- 9 Beech Creek

 Outstanding Resource Waters  
 Watersheds

**Enclosure 2**



# High Quality Waters - Northeast



## Standard\_n Name

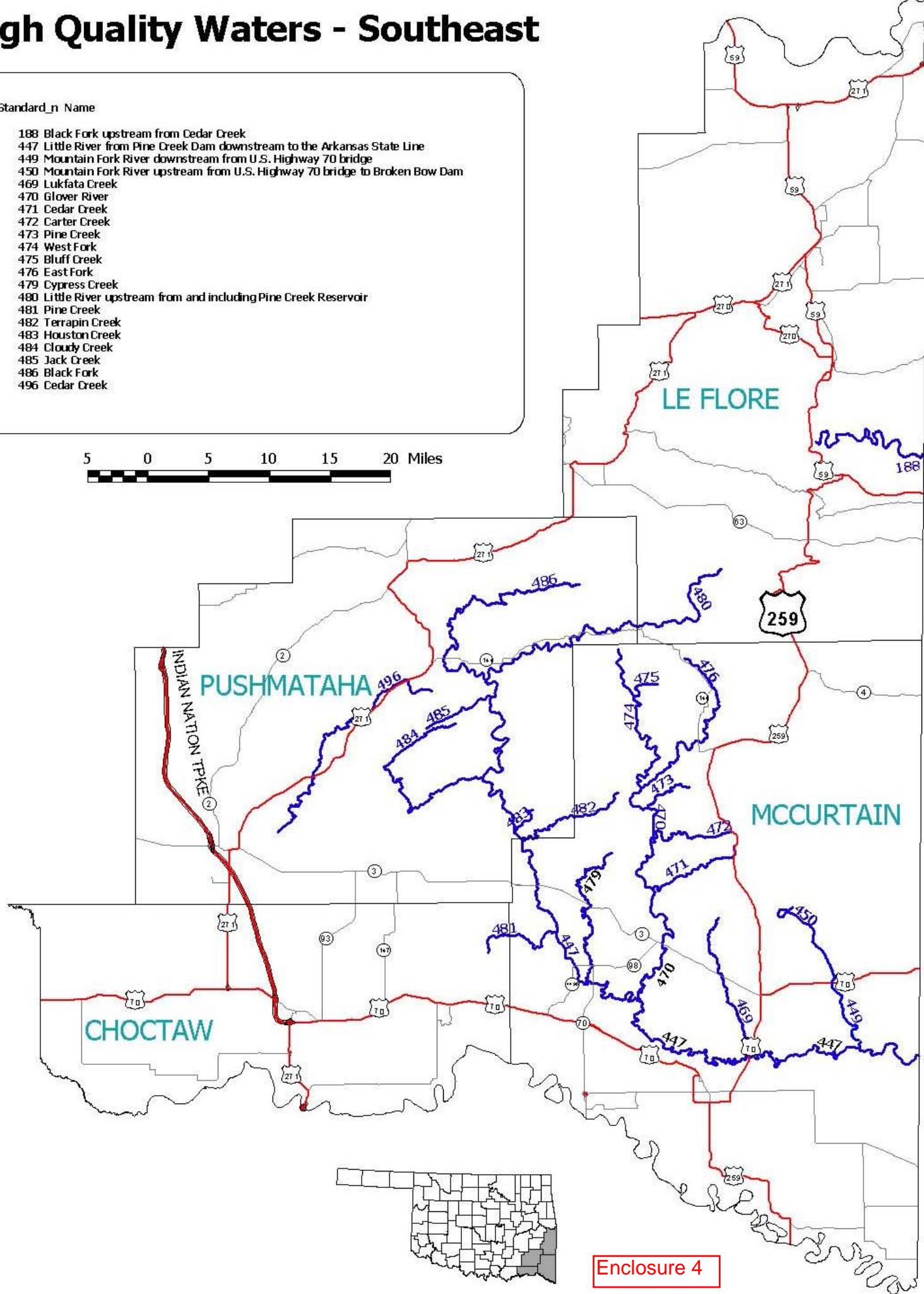
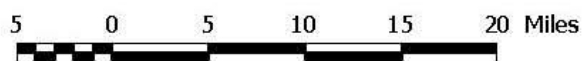
- |     |  |
|-----|--|
| 9   | Lower Illinois River from headwater of Robert S. Kerr Reservoir to Tenkiller Dam           |
| 12  | Upper Illinois River from Tenkiller Dam, including Tenkiller Lake, upstream to Barren Fork |
| 36  | Fourteen Mile Creek  |
| 38  | Snake Creek  |
| 39  | Spring Creek   |
| 40  | Little Spring Creek  |
| 53  | Brush Creek  |
| 54  | Beaty Creek  |
| 63  | Honey Creek  |
| 66  | Cave Springs Branch  |
| 75  | Warren Branch  |
| 162 | Lee Creek downstream from the 420 ft. elevation level                                      |
| 204 | Sallisaw Creek upstream from U.S. Highway 64   |

Enclosure 3

# High Quality Waters - Southeast

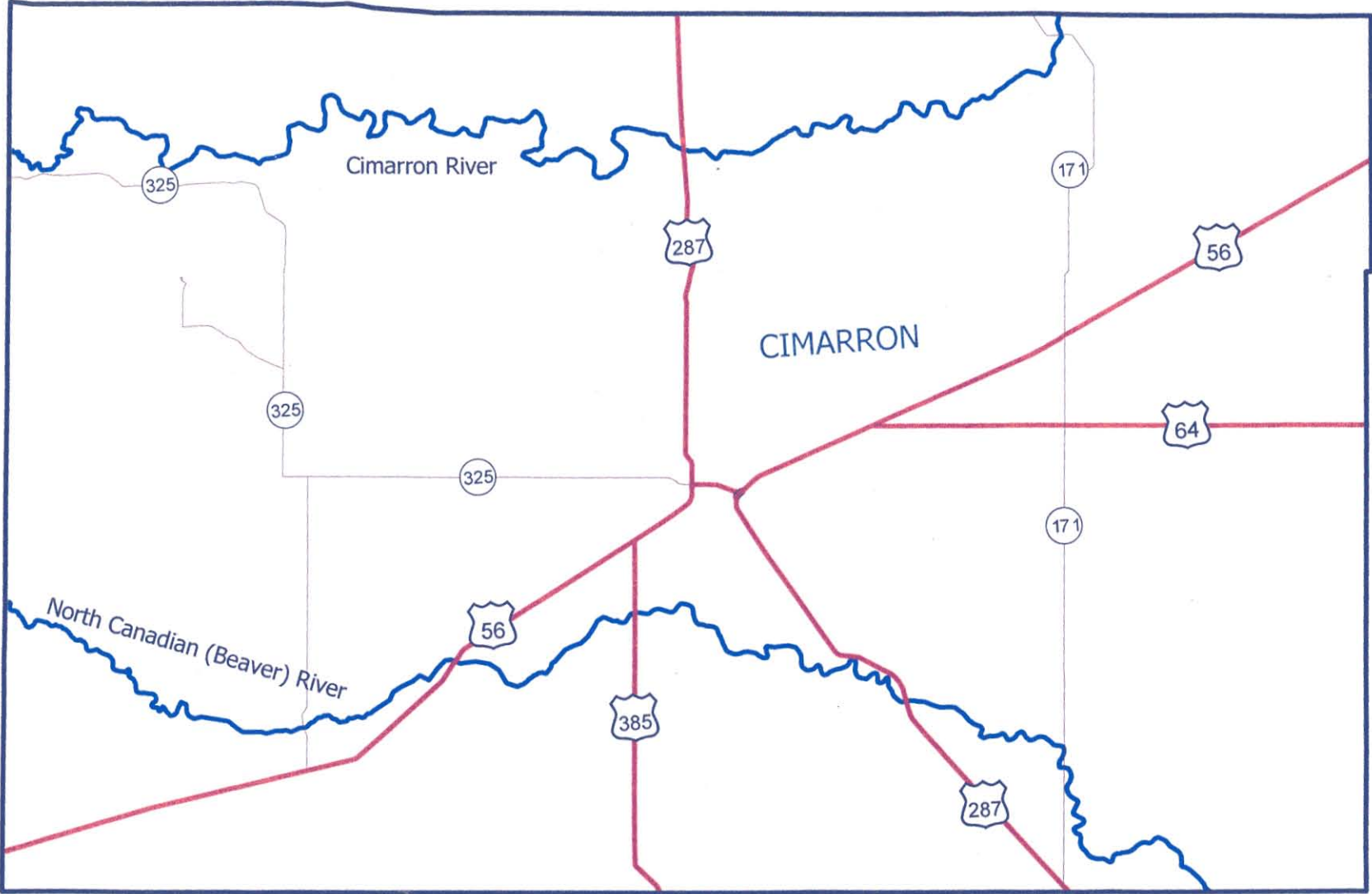
Standard\_n Name

- 188 Black Fork upstream from Cedar Creek
- 447 Little River from Pine Creek Dam downstream to the Arkansas State Line
- 449 Mountain Fork River downstream from U.S. Highway 70 bridge
- 450 Mountain Fork River upstream from U.S. Highway 70 bridge to Broken Bow Dam
- 469 Lukfata Creek
- 470 Glover River
- 471 Cedar Creek
- 472 Carter Creek
- 473 Pine Creek
- 474 West Fork
- 475 Bluff Creek
- 476 East Fork
- 479 Cypress Creek
- 480 Little River upstream from and including Pine Creek Reservoir
- 481 Pine Creek
- 482 Terrapin Creek
- 483 Houston Creek
- 484 Cloudy Creek
- 485 Jack Creek
- 486 Black Fork
- 496 Cedar Creek





# High Quality Waters - Panhandle



Enclosure 6