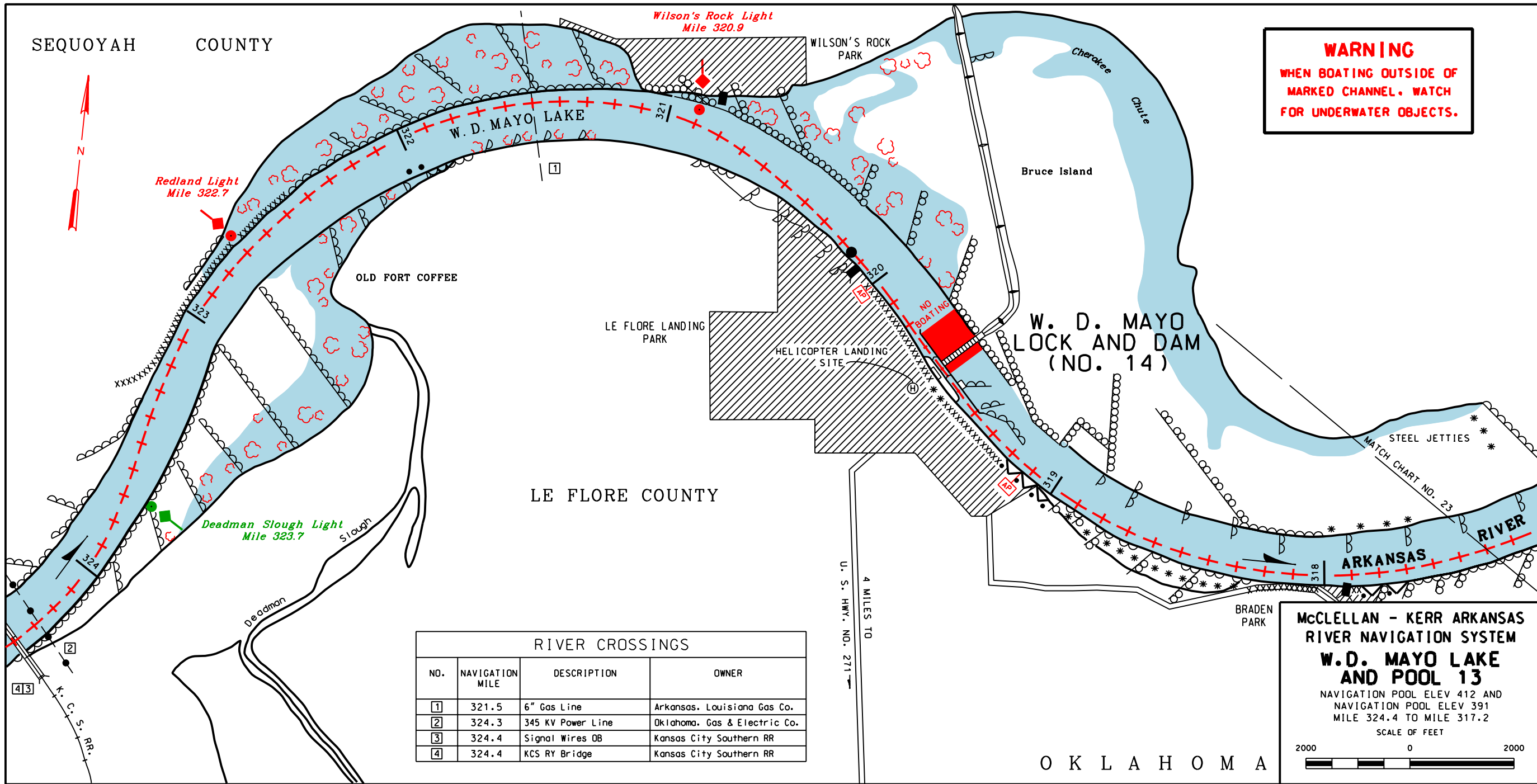
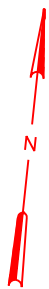


SEQUOYAH COUNTY



WARNING
WHEN BOATING OUTSIDE OF
MARKED CHANNEL. WATCH
FOR UNDERWATER OBJECTS.

LE FLORE COUNTY

RIVER CROSSINGS			
NO.	NAVIGATION MILE	DESCRIPTION	OWNER
[1]	321.5	6" Gas Line	Arkansas, Louisiana Gas Co.
[2]	324.3	345 KV Power Line	Oklahoma, Gas & Electric Co.
[3]	324.4	Signal Wires OB	Kansas City Southern RR
[4]	324.4	KCS RY Bridge	Kansas City Southern RR

McCLELLAN - KERR ARKANSAS RIVER NAVIGATION SYSTEM
W.D. MAYO LAKE AND POOL 13
 NAVIGATION POOL ELEV 412 AND NAVIGATION POOL ELEV 391
 MILE 324.4 TO MILE 317.2
 SCALE OF FEET
 2000 0 2000

LOCK 14 (918)962-3481

CHART NO. 22

O K L A H O M A

U. S. HWY. NO. 271
4 MILES TO