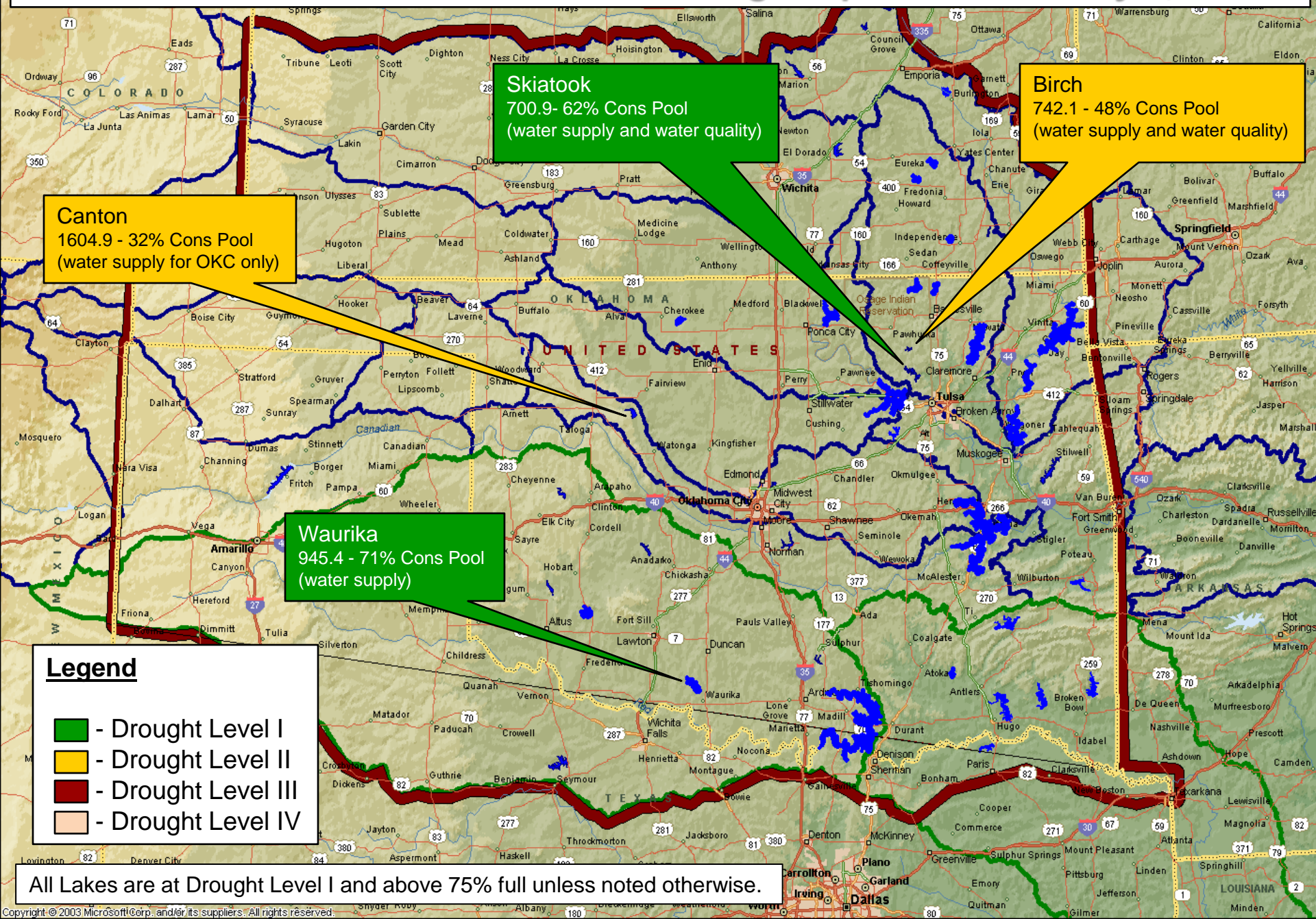


# Tulsa District Oklahoma Reservoir Drought Update – February 9, 2012



**Skiatook**  
700.9 - 62% Cons Pool  
(water supply and water quality)

**Birch**  
742.1 - 48% Cons Pool  
(water supply and water quality)

**Canton**  
1604.9 - 32% Cons Pool  
(water supply for OKC only)

**Waurika**  
945.4 - 71% Cons Pool  
(water supply)

**Legend**

- Drought Level I
- Drought Level II
- Drought Level III
- Drought Level IV

All Lakes are at Drought Level I and above 75% full unless noted otherwise.