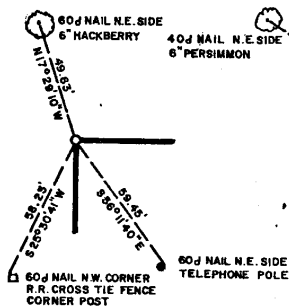
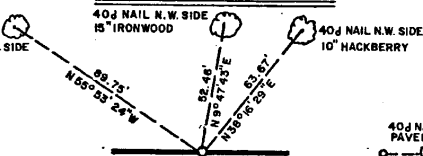


F AULA LAKE
DEEP FORK RIVER
SECTION AND QUARTER SECTION CORNER
REFERENCES FOR
SEC. 21, T12 N, R15 E, M2INTOSH COUNTY

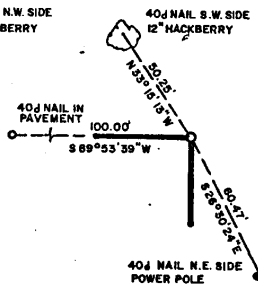
N.W. CORNER



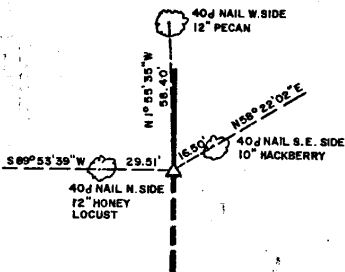
NORTH 1/4 COR.



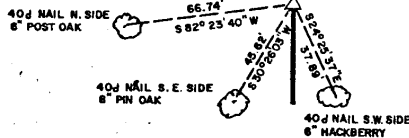
N.E. CORNER



WEST 1/4 COR.



EAST 1/4 COR.

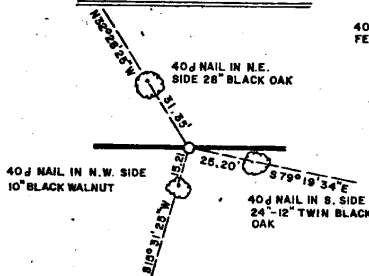


SCALE: 1" = 50'

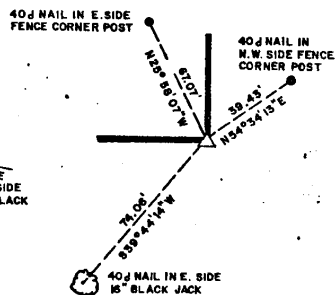
S.W. CORNER

IN LAKE

SOUTH 1/4 COR.



S.E. CORNER

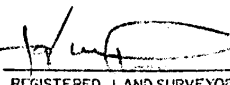


- LEGEND**
- A MONUMENT
 - D ORIGINAL CORNER
 - O IRON PIN

PLUMMER-BRUMMETT, INC.
CONSULTING ENGINEERS & SURVEYORS
 2504 E. 14th Pl., Tulsa, Okla., 74104, Tel. (918) 939-2251

FIELD BOOK NO. E-1225
 DATE: OCTOBER, 1975

Under the Supervision of
U.S. ARMY ENGINEER DISTRICT, TULSA
CORPS OF ENGINEERS


 REGISTERED LAND SURVEYOR