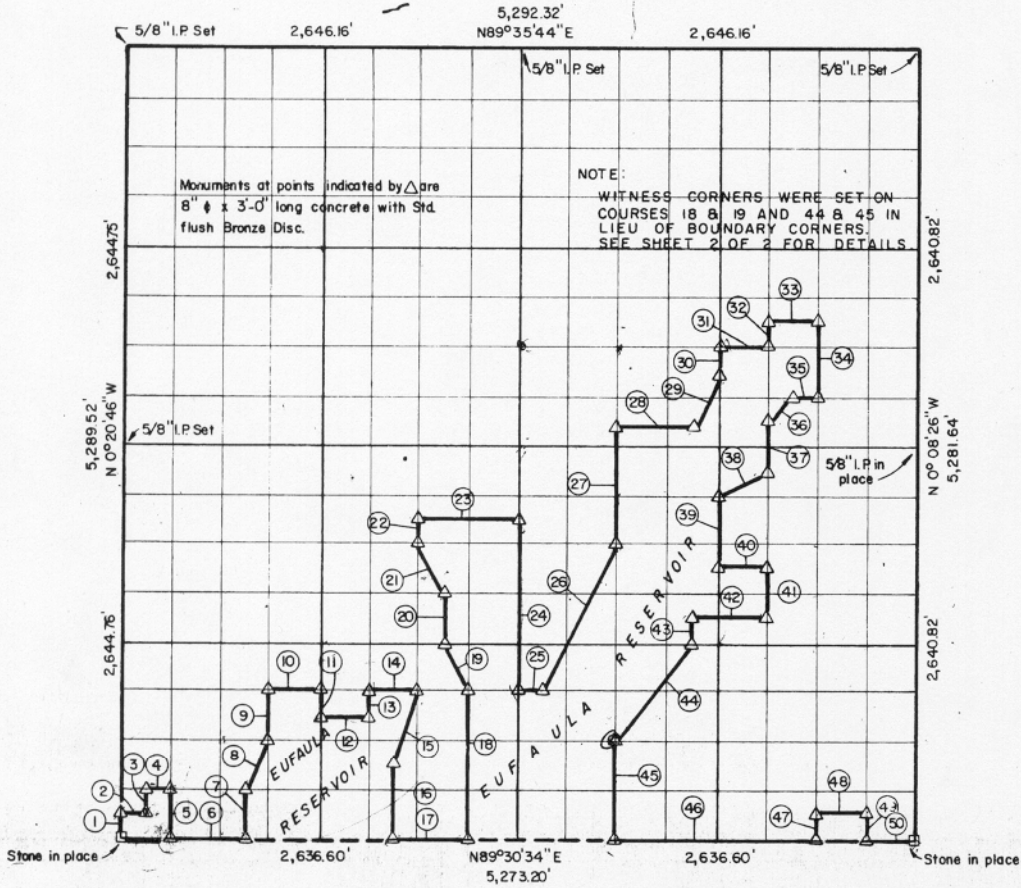


15765

SEC. 24 - T10N-R17E M... SH COUNTY, OKLAHOMA

Sheet 1



Course No.	Distance	Bearing	Course No.	Distance	Bearing
1	165.30'	N 0° 20' 46" W	21	368.80'	N 26° 50' 10" W
2	164.80'	N 89° 30' 44" E	22	165.20'	N 0° 16' 08" W
3	165.29'	N 0° 20' 23" W	23	660.12'	N 89° 32' 41" E
4	164.83'	N 89° 30' 54" E	24	1,156.23'	S 0° 14' 36" E
5	330.57'	S 0° 20' 00" E	25	164.90'	N 89° 31' 33" E
6	494.37'	N 89° 30' 34" E	26	1,109.47'	N 26° 15' 43" E
7	330.52'	N 0° 18' 50" W	27	825.73'	N 0° 13' 04" W
8	369.78'	N 26° 09' 42" E	28	495.31'	N 89° 33' 19" E
9	330.50'	N 0° 18' 27" W	29	369.85'	N 26° 19' 14" E
10	329.80'	N 89° 31' 33" E	30	165.11'	N 0° 11' 31" W
11	165.24'	S 0° 17' 41" E	31	330.33'	N 89° 33' 48" E
12	329.77'	N 89° 31' 23" E	32	165.10'	N 0° 10' 45" W
13	165.22'	N 0° 16' 55" W	33	330.37'	N 89° 33' 58" E
14	329.80'	N 89° 31' 33" E	34	495.24'	S 0° 09' 58" E
15	522.88'	S 18° 06' 22" W	35	165.12'	S 89° 33' 29" W
16	495.63'	S 0° 16' 31" E	36	234.03'	S 44° 41' 37" W
17	494.36'	N 89° 30' 34" E	37	330.20'	S 0° 10' 45" E
18	991.14'	N 0° 15' 22" W	38	369.79'	S 63° 01' 47" W
19	368.72'	N 26° 49' 42" W	39	495.34'	S 0° 11' 31" E
20	330.40'	N 0° 15' 45" W	40	329.99'	N 89° 32' 22" E

Book No. E-1054 Date: June 1965 Sheet 1 of 2.

I, Charles R. Keithline, a Registered Professional Engineer in the State of Oklahoma, do hereby certify that the above plat is a true and accurate survey of Sec. 24 - T10N-R17E, as made under my supervision.

CRAIG AND KEITHLINE
Consulting Engineers

Charles R. Keithline
CHARLES R. KEITHLINE
Reg. Prof. Engr. No. 2834 (Okla.)

20,550.64 ✓

220