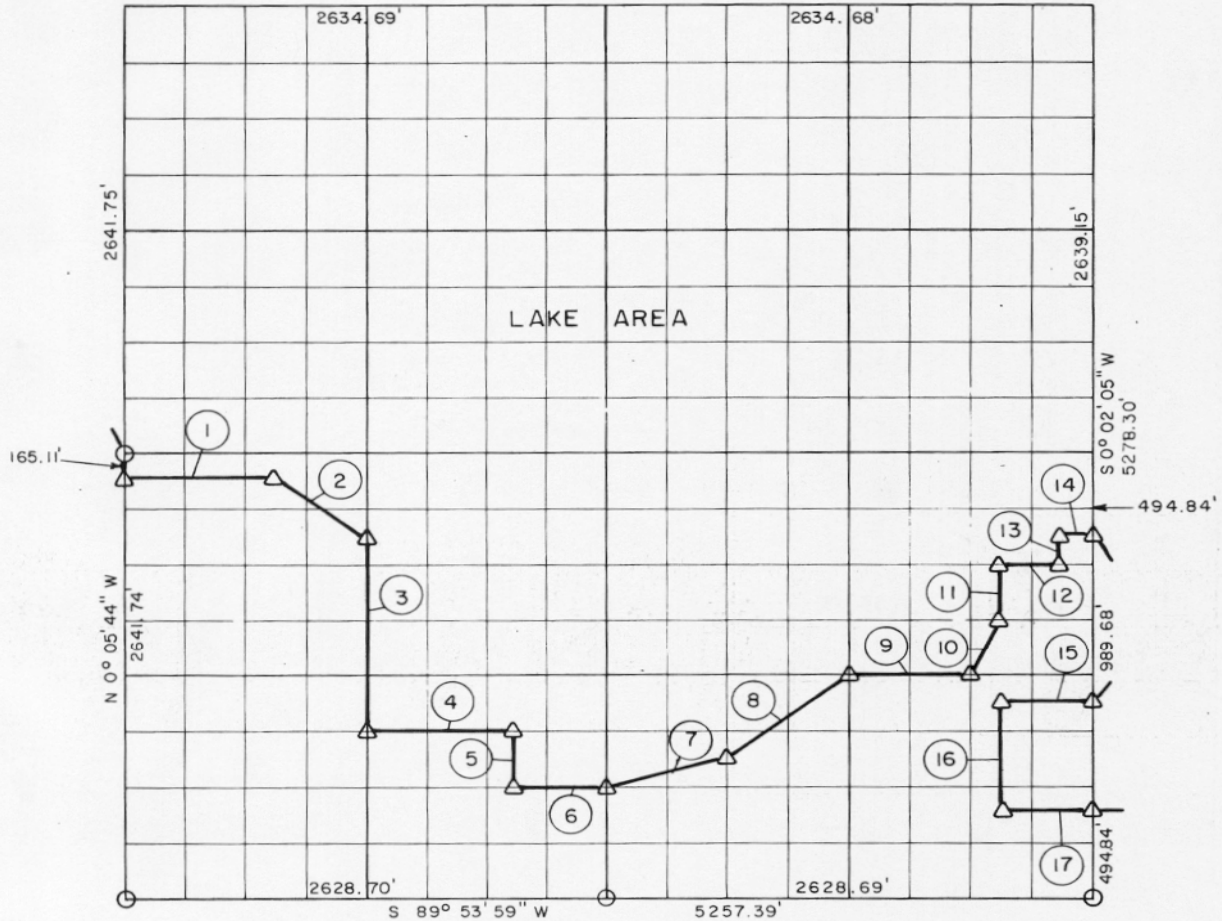


McIntosh COUNTY  
 BOOK 172 E 388  
 DATE 2-5-74

PARTIAL BOUNDARY SURVEYS  
 EUFAULA LAKE  
 CANADIAN RIVERS, OKLAHOMA  
 Performed Under Contract Number DACW 56-73-C-0218  
 SEC. 25, T 11 N, R 15 E McINTOSH COUNTY

N 89° 57' 23" E  
 5269.37'



Course No.	Distance	Bearing	Course No.	Distance	Bearing
1	822.35'	N 89° 55' 34" E	13	164.95'	N 0° 01' 50" E
2	593.62'	S 56° 17' 03" E	14	164.45'	N 89° 55' 22" E
3	1155.48'	S 0° 03' 47" E	15	493.12'	S 89° 54' 42" W
4	821.82'	N 89° 54' 37" E	16	659.85'	S 0° 01' 21" W
5	330.09'	S 0° 02' 34" E	17	492.98'	N 89° 54' 18" E
6	493.02'	N 89° 54' 25" E			
7	677.97'	N 75° 49' 14" E			
8	823.55'	N 52° 57' 58" E			
9	657.55'	N 89° 54' 50" E			
10	368.89'	N 26° 29' 09" E			
11	329.92'	N 0° 01' 21" E			
12	328.87'	N 89° 55' 15" E			

Field Book No. E-1195 Date: January, 1974

**LEGEND**  
 Δ MONUMENT  
 □ ORIGINAL CORNER  
 ○ IRON PIN

**M<sup>C</sup>COY, MECKLENBURG AND PARR, INC.**

Under the Supervision of  
 U.S. ARMY ENGINEER DISTRICT, TULSA  
 CORPS OF ENGINEERS

140  
 CERTIFICATE OF SURVEY

I HEREBY CERTIFY THAT THE ABOVE PLAT IS A TRUE AND CORRECT REPRESENTATION OF THE SURVEY MADE IN SECTION 25, T 11 N, R 15 E, McINTOSH COUNTY, OKLAHOMA.

ROBERT L. McCOY  
 REG. LAND SURVEYOR NO. 83