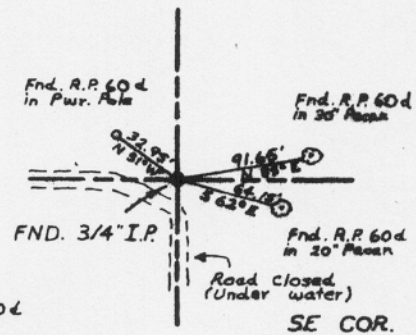
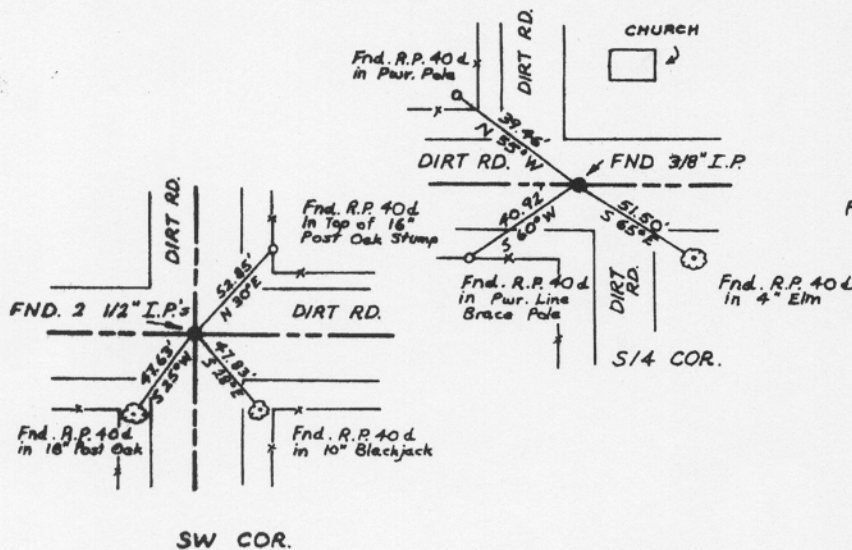
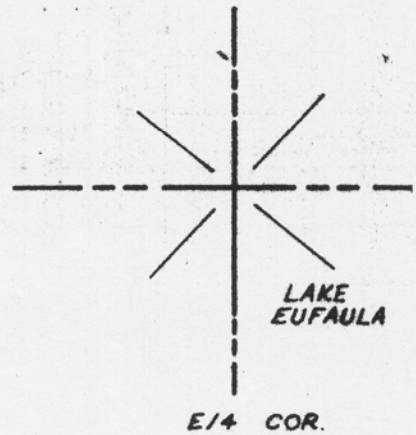
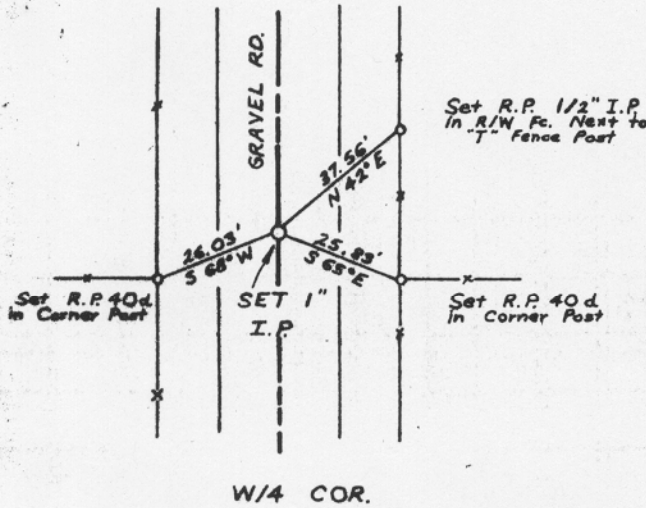
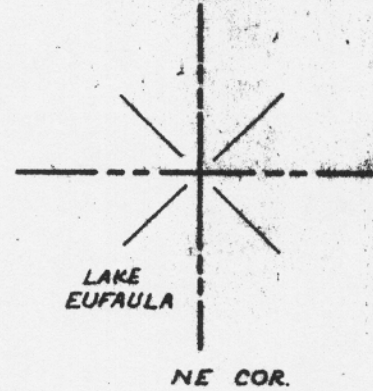
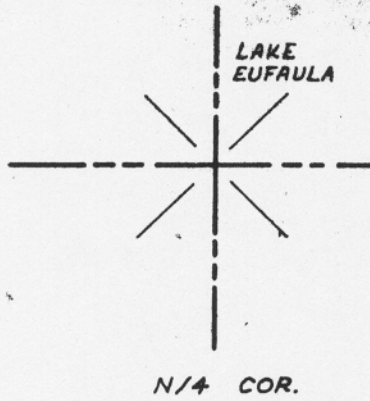
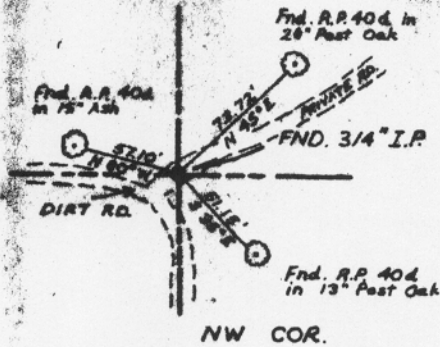


AREA "C" EUFAULA LAKE
 CANADIAN RIVER, OKLAHOMA
 SECTION AND QUARTER SECTION CORNER
 REFERENCES FOR
 SECTION 31, T11N-R16E
 McINTOSH COUNTY, OKLAHOMA

NOTE:
 THIS PLAT REVISED 8/30/75
 AMENDS PREVIOUS PLAT FOR THIS
 SECTION AS FILED ON PG. 568,
 BOOK 184, THIS COUNTY.



LEGEND

- ▲ MONUMENT SET
- △ MONUMENT FND.
- OKLA. ST. HWY. DEPT. COR.
- IRON PINS SET
- IRON PINS FND.
- STONES FND.
- REF. MON. SET