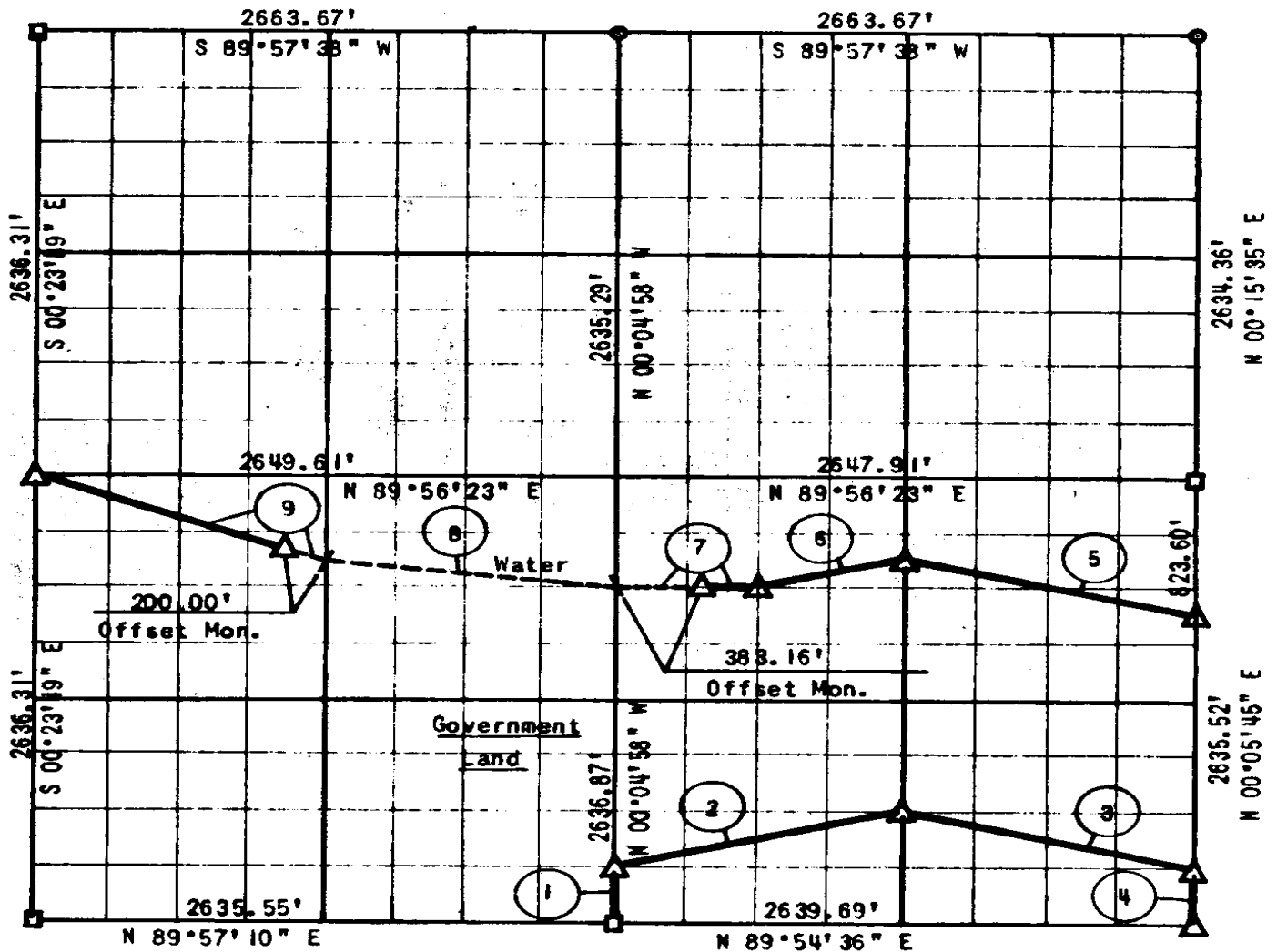


PARTIAL SURVEY
 EUFAULA LAKE
 SECTION 35, T 6 N, R 16 E

Performed Under Contract No. DACW 56-77-C-0097

PITTSBURG COUNTY



Course No.	Distance	Bearing	Course No.	Distance	Bearing
1	329.61'	N 00° 04' 58" W			
2	1361.38'	N 75° 54' 22" E			
3	1360.12'	S 76° 04' 04" E			
4	329.44'	S 00° 05' 45" W			
5	1362.68'	N 76° 04' 32" W			
6	681.88'	S 75° 56' 59" W			
7	661.46'	S 89° 55' 56" W			
8	1333.78'	N 82° 57' 37" W			
9	1415.45'	N 69° 37' 07" W			

CERTIFICATE OF SURVEY

Field Book No. E-1310

Date: Aug. 2, 1977

I hereby certify that the above plat is a true and correct representation of the survey made in Section 35, T 6 N, R 16 E, Pittsburg County, Oklahoma.

SULLIVAN & GILBERT, INC.
 Consulting Engineers
 Under the supervision of
 U. S. ARMY ENGINEER DISTRICT, TULSA
 CORPS OF ENGINEERS

LEGEND
 Δ - C OF E MON.
 ○ - IRON PIN
 □ - ORIG. STONE

Sullivan & Gilbert
 REGISTERED LAND SURVEYOR L. S. #122

582