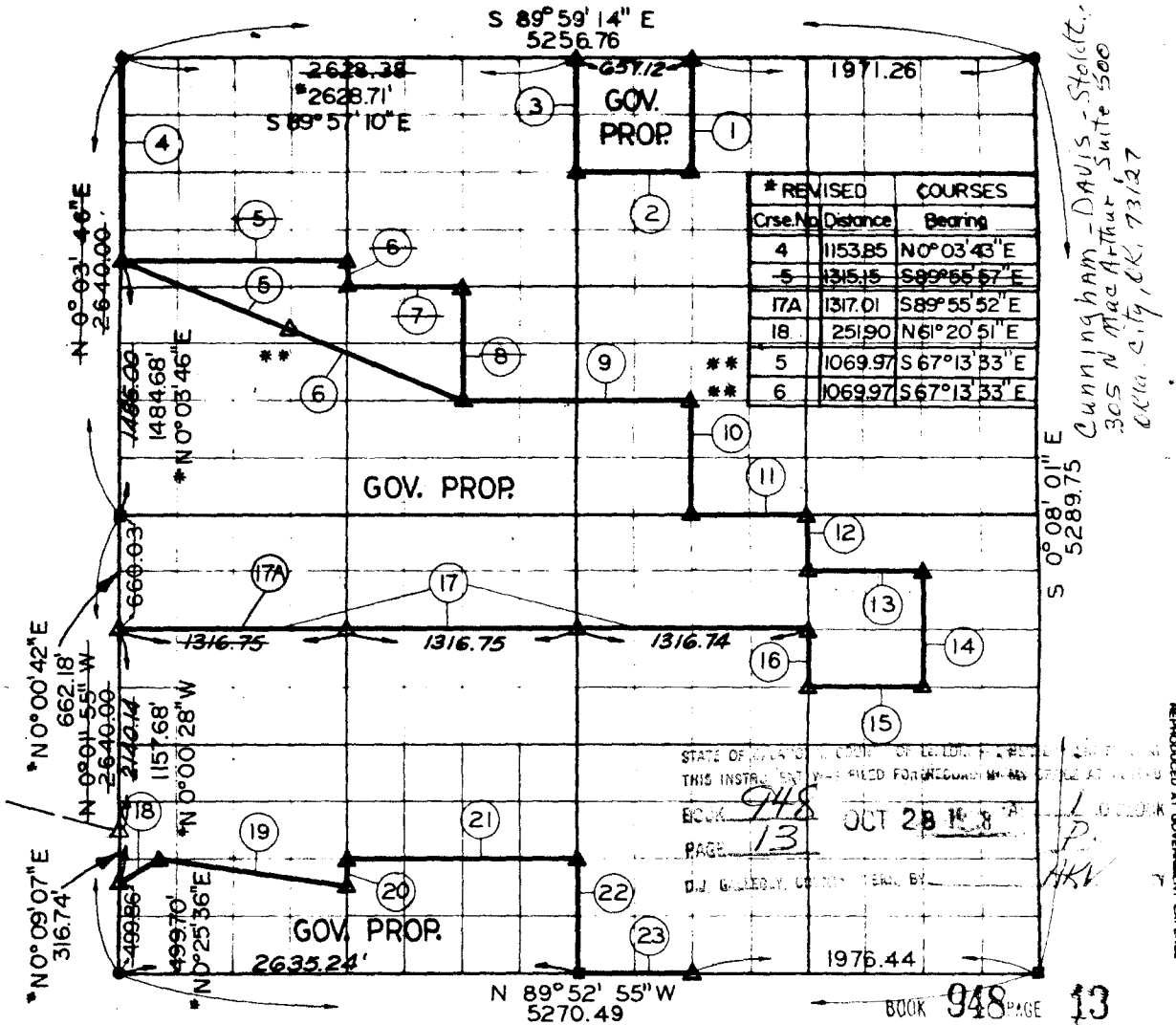


54
10707
SEC. 13 T-5-N R-24-E COUNTY LE FLORE



COURSE NUMBER	DISTANCE	BEARING	COURSE NUMBER	DISTANCE	BEARING
1.	661.53	S00°04'40"E	13.	658.30	S89°52'55"E
2.	657.33	N89°57'39"W	14.	660.00	S00°06'54"E
3.	661.23	N00°03'34"W	15.	658.69	N89°52'55"W
4.	1155.00	S00°03'46"W	16.	330.00	N00°05'47"W
5.	1315.11	S89°56'28"E	17.	3950.24	N89°52'55"W
6.	165.15	S00°00'06"W	18.	260.53	N60°54'13"E
7.	657.63	S89°56'04"E	19.	1111.79	S78°39'06"E
8.	660.92	S00°01'44"E	20.	259.00	N00°02'44"W
9.	1315.85	S89°54'29"E	21.	1317.33	S89°52'55"E
10.	661.53	S00°04'40"E	22.	660.00	S00°03'34"E
11.	658.23	S89°52'55"E	23.	658.81	S89°52'55"E
12.	330.00	S00°05'47"E			

Field Book No. 1-152 December 8, 1969

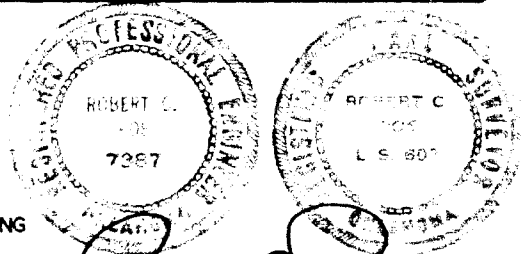
I, Robert C. Poe, a Registered Professional Engineer and a Registered Land Surveyor, do hereby certify that the above plat is a true and accurate survey of Section 13, T-5-N, R-24-E as made under my supervision.

* REVISED JUNE 1983 by HUFFMAN SURVEYING CO. & ENTZ ENGINEERING & ASSOCIATES.

** REVISED OCT. 1988 by CUNNINGHAM-DAVIS-STOLDT, INC.

LEGEND

- △ MONUMENT
- ORIGINAL STONE
- IRON PIN



Robert C. Poe
Robert C. Poe
Reg. Prof. Engr. No. 7387
Reg. Land Surveyor No. LS 602