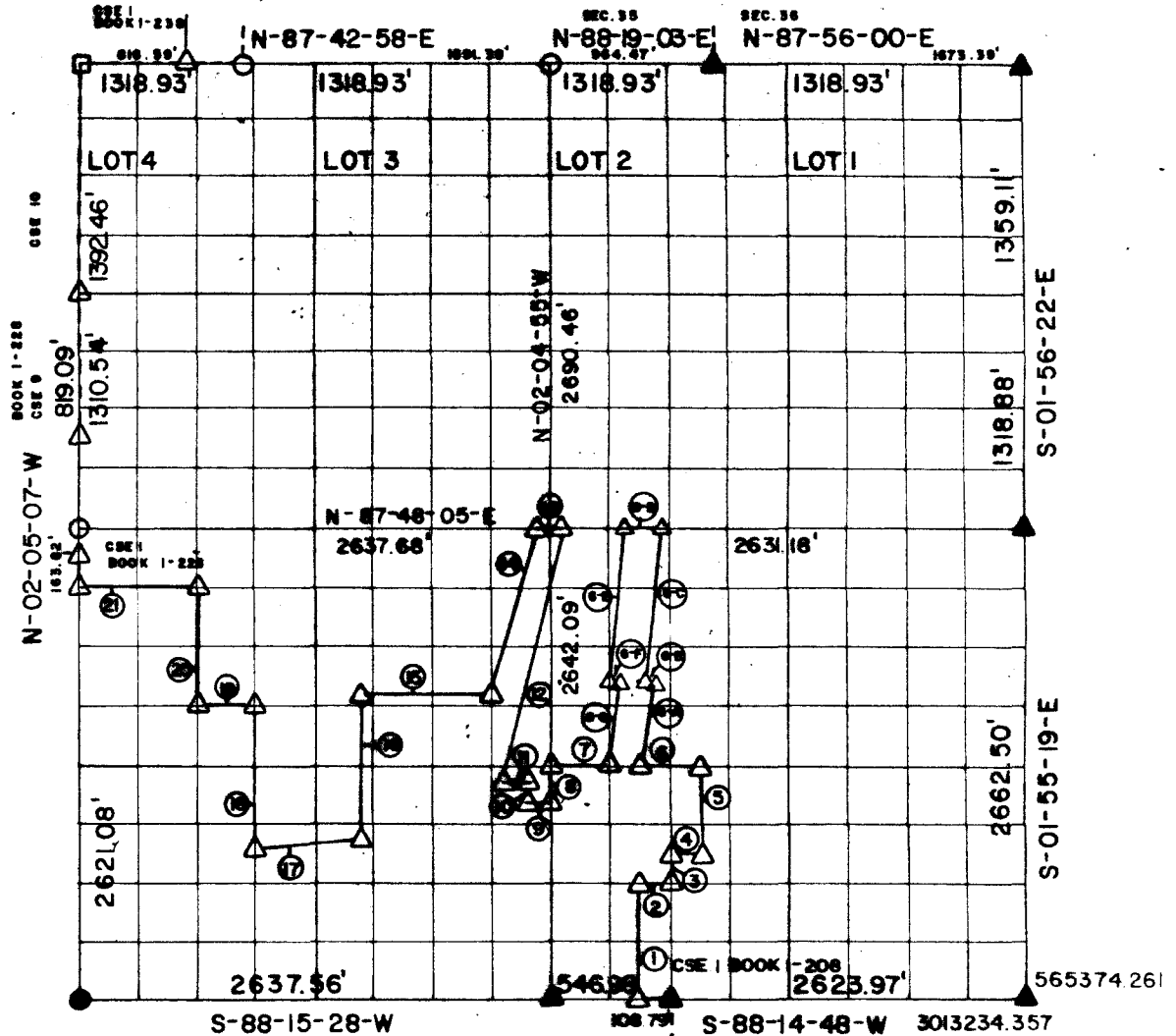


# RECORD BOUNDARY PLAT WISTER LAKE POTEAU RIVER OKLAHOMA



SEC. 1      T 4N      R 25E      LE FLORE COUNTY



NOTE: ALL BEARINGS AND DISTANCE ARE GRID

Course No.	Distance	Bearing	Course No.	Distance	Bearing
1	620.00'	N-02-01-59-W	14	879.26'	S-08-56-06-W
2	150.00'	N-88-08-07-E	15	710.65'	S-88-01-47-W
3	200.00'	N-02-01-59-W	16	737.01'	S-02-05-01-E
4	50.00'	N-88-08-07-E	17	649.68'	S-73-21-17-W
5	307.00'	N-04-42-01-E	18	729.16'	N-02-05-01-W
6	289.79'	S-88-01-24-W	19	330.00'	S-88-01-47-W
7	321.00'	S-88-01-25-W	20	660.00'	N-02-05-08-W
8	99.00'	S-02-04-55-W	21	660.00'	S-87-48-05-W
9	118.50'	S-88-01-47-W			
10	41.70'	N-02-04-55-E			
11	122.71'	S-88-01-47-W			
12	1403.64'	N-08-56-06-E			
13	163.00'	S-87-48-05-W			

**CERTIFICATE OF SURVEY** Field Book No. 1-227      Date SEP. 1977

HEREBY CERTIFY THAT THE ABOVE  
PLAT IS A TRUE AND CORRECT  
REPRESENTATION OF THE SURVEY  
OF THE ABOVE SECTION

*Billy L. Curtis*

CURTIS & GUNN SURVEYING  
STONEWALL, OKLA.

Under the Supervision of  
U.S. ARMY CORPS OF ENGINEERS  
TULSA DISTRICT, OKLAHOMA

*Updated* LEGEND

- △ - MONUMENT SET
- ▲ - MONUMENT FOUND
- - ORIGINAL CORNER
- - IRON PIN POUND
- - IRON PIN SET