

WISTER LAKE
POTEAU RIVER OKLAHOMA

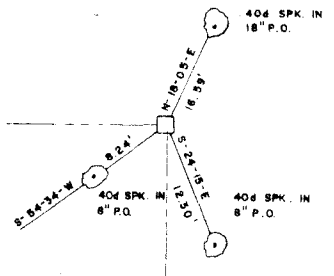
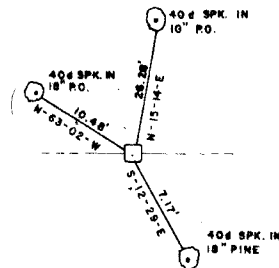
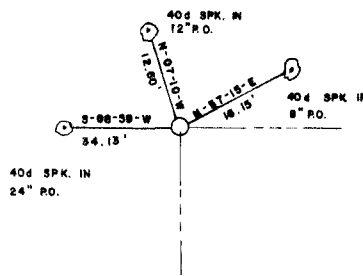
SECTION AND QUARTER SECTION CORNER
REFERENCES FOR

SEC. 2 T. 4N., R. 25E., 1 M., COUNTY-LE FLORE

N.W. CORNER

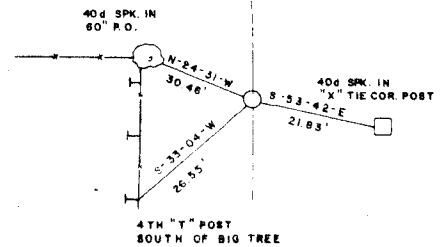
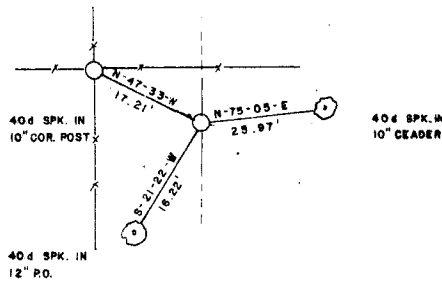
N.E. CORNER

NORTH 1/4 COR.



WEST 1/4 COR.

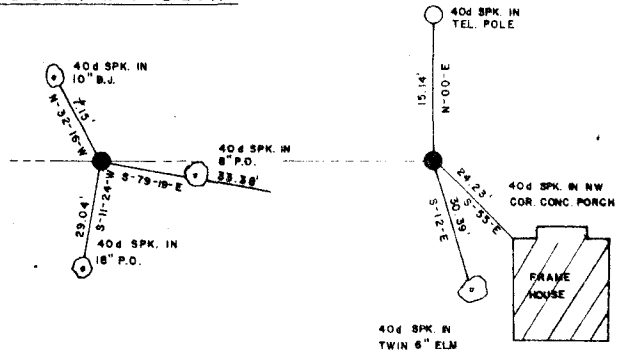
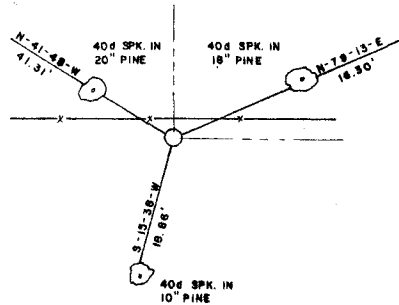
EAST 1/4 COR.



S.W. CORNER

S.E. CORNER

SOUTH 1/4 COR.



Field Book No. J-228 Date SEP. 1977

LEGEND

- ▲ MONUMENT FOUND
- △ MONUMENT SET
- ORIGINAL CORNER
- IRON PIN FOUND
- IRON PIN SET

CURTIS & GUINN SURVEYING
STONEWALL, OKLA.

Billy L. Curtis
REGISTERED LAND SURVEYOR NO. 603

Under the Supervision of
U.S. ARMY CORPS OF ENGINEERS
TULSA DISTRICT, OKLAHOMA