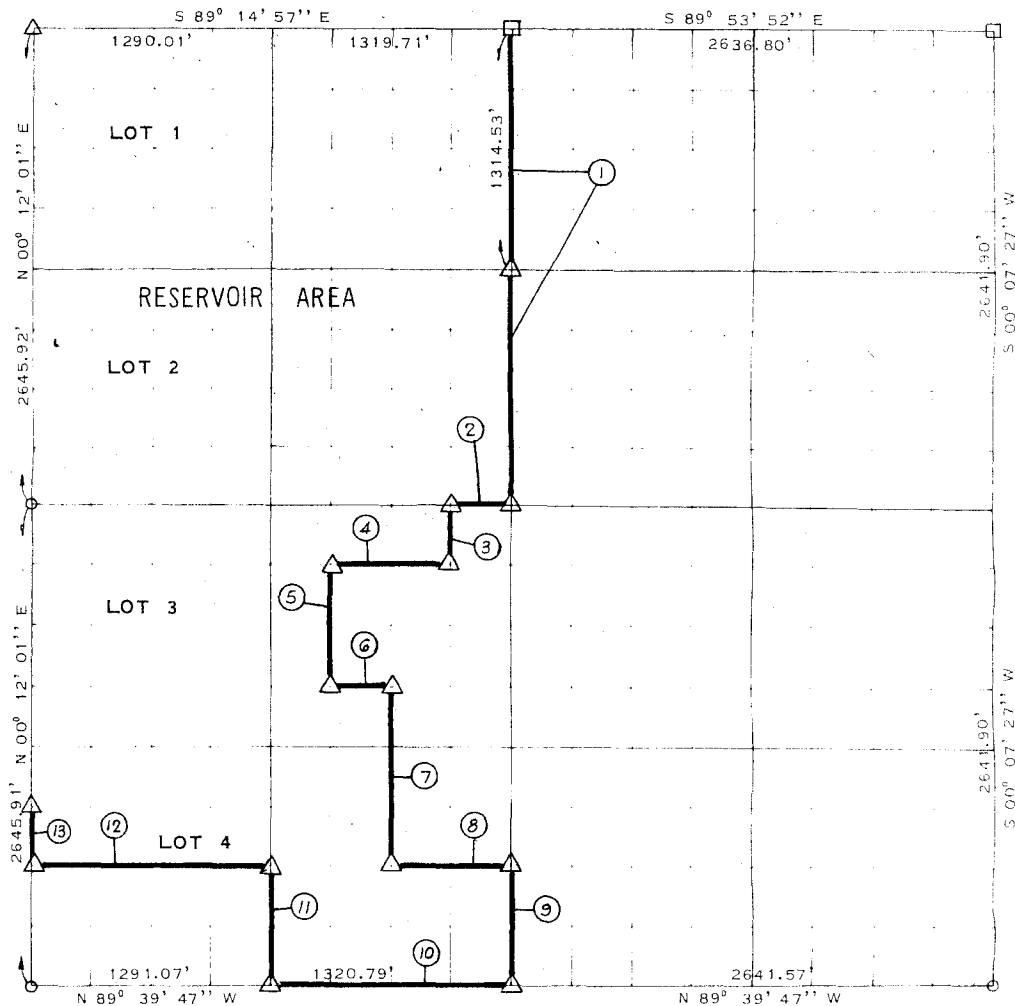


WISTER RESERVOIR POTEAU RIVER, OKLAHOMA

PARTIAL BOUNDARY SURVEYS OF SECTION 19, T 5 N R 24 E LEFLORE COUNTY



COURSE	DISTANCE	BEARING	COURSE	DISTANCE	BEARING
1	2629.06'	S 00° 10' 33" W			
2	330.05'	N 89° 37' 09" W			
3	330.52'	S 00° 10' 44" W			
4	660.15'	N 89° 37' 29" W			
5	661.17'	S 00° 11' 06" W			
6	330.11'	S 89° 38' 08" E			
7	991.66'	S 00° 10' 55" W			
8	660.32'	S 89° 39' 08" E			
9	660.98'	S 00° 10' 33" W			
10	1320.79'	N 89° 39' 47" W			
11	661.23'	N 00° 11' 17" E			
12	1290.93'	N 89° 39' 08" W			
13	330.74'	N 00° 12' 01" E			
10854.71		2.05 mi			

SURVEY BOOK 1-215

LEGEND

- △ C E MONUMENT ● HWY DEPT MON
- ORIGINAL STONE ○ IRON PIN

CONTRACT NO DACW 56-73-C-0181
 PERFORMED UNDER SUPERVISION OF
 US ARMY ENGINEER DISTRICT, TULSA
 CORPS OF ENGINEERS

CERTIFICATE OF SURVEY
 THIS DRAWING CORRECTLY REPRESENTS A SECTION SURVEY
 COMPLETED UNDER MY SUPERVISION

BY
SLADE & ASSOCIATES

James L Slade 1-10-74

CONSULTING ENGINEERS
 8 NW 65TH STREET - P.O. BOX 14130
 OKLAHOMA CITY, OKLA. 73114

JAMES L SLADE
 REGISTERED LAND SURVEYOR
 OKLAHOMA NO. 4