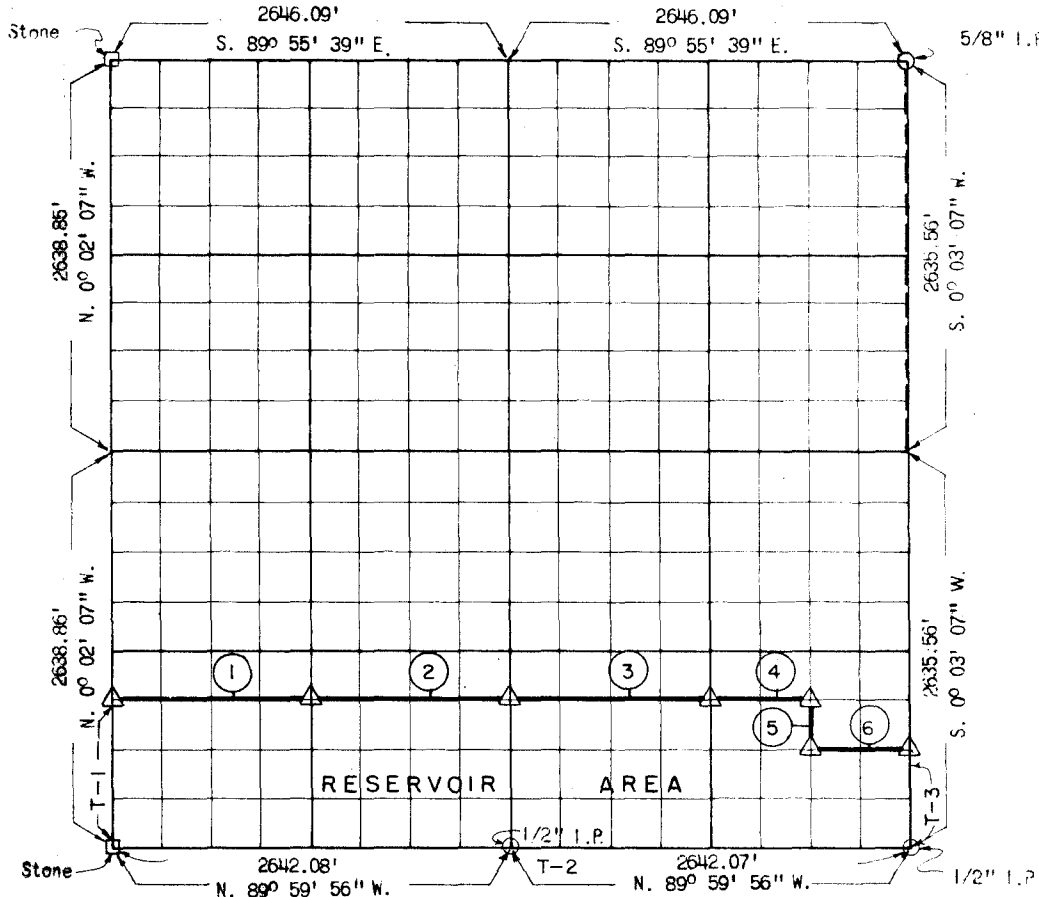


PARTIAL BOUNDARY SURVEYS
WISTER RESERVOIR
POTEAU RIVER, OKLAHOMA

Performed Under Contract Number DACW 56-70-C

SEC 33 T-6-N R-24-E COUNTY LE FLORE



Course No.	Distance	Bearing	Course No.	Distance	Bearing
①	1321.41'	S. 89° 59' 08" E.			
②	1321.41'	S. 89° 59' 08" E.			
③	1321.41'	S. 89° 59' 08" E.			
④	660.70'	S. 89° 59' 08" E.			
⑤	329.49'	S. 0° 02' 28" W.			
⑥	660.64'	S. 89° 59' 24" E.			
T-1	989.57'	N. 0° 02' 07" W.			
T-2	5284.15'	N. 89° 59' 56" W.			
T-3	658.89'	S. 0° 03' 07" W.			

CERTIFICATE OF SURVEY Field Book No. 1-154 Date 17 JULY, 1970

I HEREBY CERTIFY THAT THE ABOVE PLAT IS A TRUE AND CORRECT REPRESENTATION OF THE SURVEY MADE IN SECTION 33, T-6-N, R-24-E, LE FLORE COUNTY, OKLAHOMA.

W. W. Wheeler
REGISTERED LAND SURVEYOR

WHEELER & ASSOCIATES
ENGINEERS
Under the Supervision of
U.S. ARMY ENGINEER DISTRICT, TULSA
CORPS OF ENGINEERS
SHEET 2 of 6

LEGEND
 Δ MONUMENT
 ○ ORIGINAL CORNER
 ○ IRON PIN
 ■ HWY R/W MARKER