

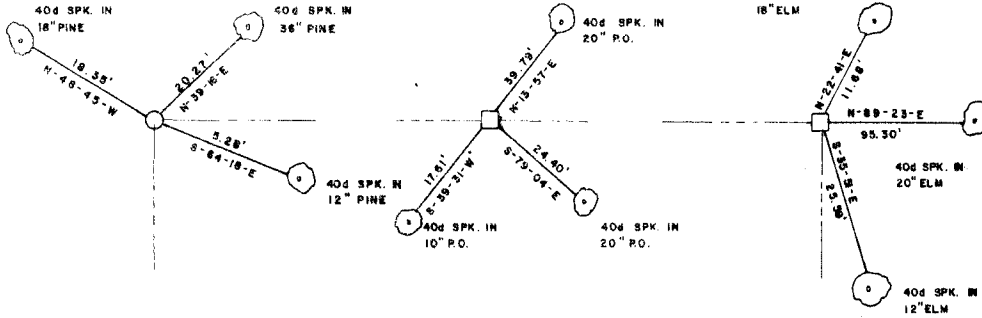
WISTEF LAKE  
 POTEAU RIVER OKLAHOMA

SECTION AND QUARTER SECTION CORNER  
 REFERENCES FOR  
 SEC.35 T.5N., R.24E., 1 M., COUNTY-LE FLORE

N.W. CORNER

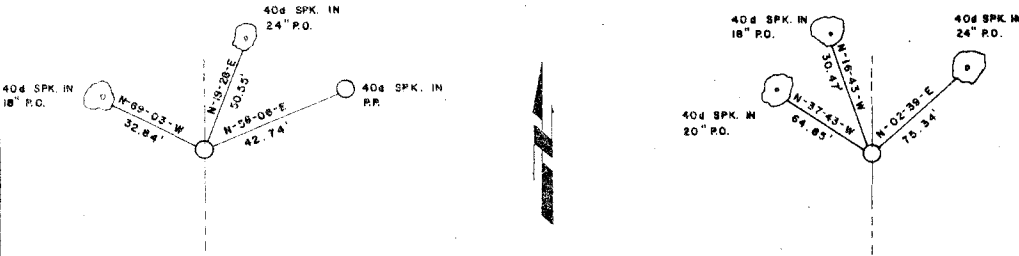
N.E. CORNER

NORTH 1/4 COR.



WEST 1/4 COR.

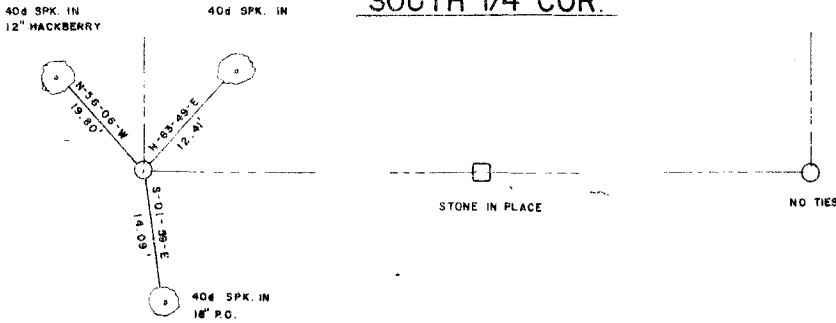
EAST 1/4 COR.



S.W. CORNER

S.E. CORNER

SOUTH 1/4 COR.



Field Book No. I-243 Date SEP. 1977

LEGEND

- ▲ — MONUMENT FOUND
- △ — MONUMENT SET
- — ORIGINAL CORNER
- — IRON PIN FOUND
- — IRON PIN SET

CURTIS & GUINN SURVEYING  
 STONEWALL, OKLA.

*Bobby L. Curtis*  
 REGISTERED LAND SURVEYOR NO. 603

Under the Supervision of  
 U.S. ARMY CORPS OF ENGINEERS  
 TULSA DISTRICT, OKLAHOMA

SHEET 2 of 2