

NOTICE OF PUBLIC OPINION

Location: Fort Gibson WMA Shooting Range

Existing Range Coordinates: [35°57'31.2"N 95°20'04.9"W](#)

Proposed New Range Coordinates: [36°04'30.8"N 95°23'02.5"W](#)

Purpose: To provide an opportunity for the public to comment, identify specific issues, and/or environmental impacts that can be addressed in the Draft Environmental Assessment for the Oklahoma Department of Wildlife Conservation (ODWC).

Need: The proposed need is to complete an environmental assessment (EA) including environmental studies and to arrive at either a Finding of No Significant Impact (FONSI) or complete an Environmental Impact Study (EIS) pursuant to the National Environmental Policy Act (NEPA) for the project described below:

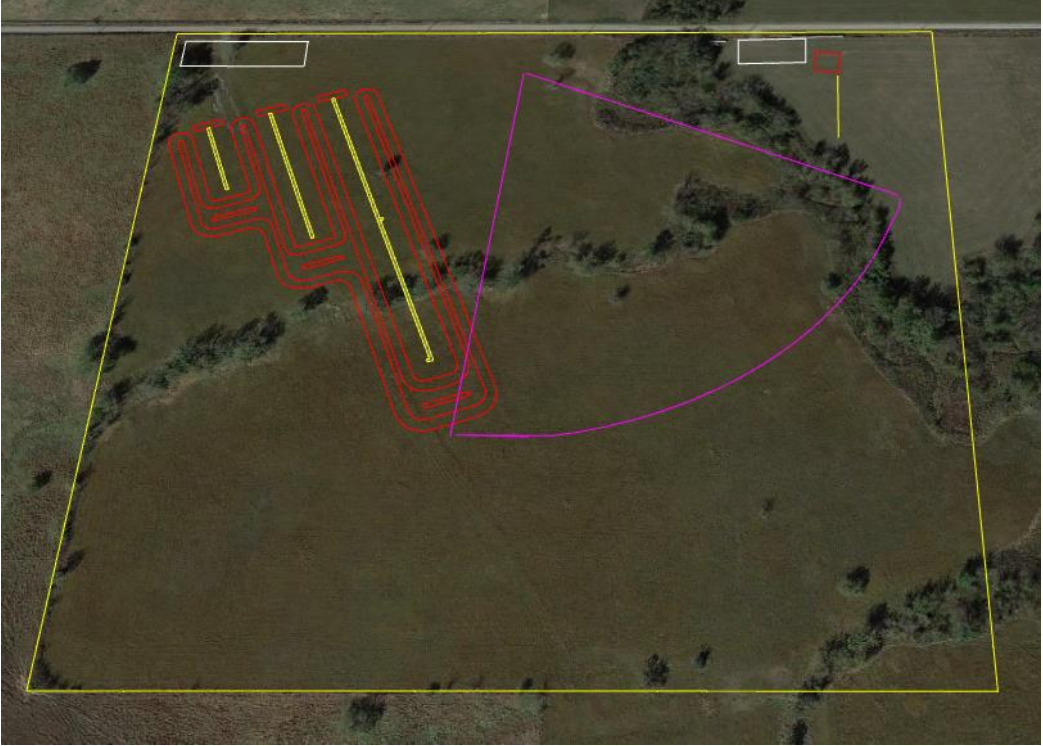
Closure of the existing shooting range on Fort Gibson WMA, located at [35°57'31.2"N 95°20'04.9"W](#), and the construction of a new shooting range on Fort Gibson WMA, located at [36°04'30.8"N 95°23'02.5"W](#). The new shooting range location is approximately 8 miles north of the city of Wagoner, OK and approximately 12 miles from the existing shooting range. ODWC has explored other alternative sites and determined this to be the best location bordering flood plain limits, best soil type, proximity of residences or public places, and the least amount of timber removal.

The existing shooting range has been deemed problematic due to annual flooding, potentially creating lead migration issues. There have also been reports of bullets landing in the water near boats on the back side of the backstop. Per Oklahoma Title 29: Hunting or discharge of firearm near public place - Shooting from or across highway or railroad right-of-way. A: No person may hunt, pursue game, or discharge firearms within four hundred and forty (440) yards of any church, schoolhouse, or other public place where people may assemble, so as to disturb such assemblage. The existing shooting range is located approximately 200 yards southwest of the soccer fields and ballfields, 300 yards south of the rodeo grounds, and 400 yards south/southwest of the archery range and buildings. Therefore, ODWC wants to update/relocate the range to an area that is much more favorable for topography, flood control, and safety issues.

Existing Fort Gibson WMA Shooting Range:



Preliminary Layout at Proposed New Range Location:



Once the EA process is complete, ODWC will proceed with engineering plans. Proposed plans will include 50, 100, and 200-yard ranges with metal shooting stations including shooting benches/tables for all 3 ranges, a shotgun/trap range, an archery range, fencing, gates, restrooms, and associated parking lots. All range components will include ADA parking and access.

Estimated timeline to complete the EA, engineering, and construction is 3-5 years.

The existing and new shooting range locations are on property owned by the U.S. Army of Corps of Engineers (USACE), under license for operations and management by the ODWC, and funded by the ODWC and United States Fish and Wildlife Service (USFWS).

Comment Deadline:

Written comments to be provided or postmarked by November 30, 2023.

Submit comments via email to: Amanda.thomas@odwc.ok.gov

Submit comments via mail to:

Oklahoma Department of Wildlife Conservation

Attn: Shooting Range Coordinator

P.O. Box 53465, Oklahoma City, OK 73152