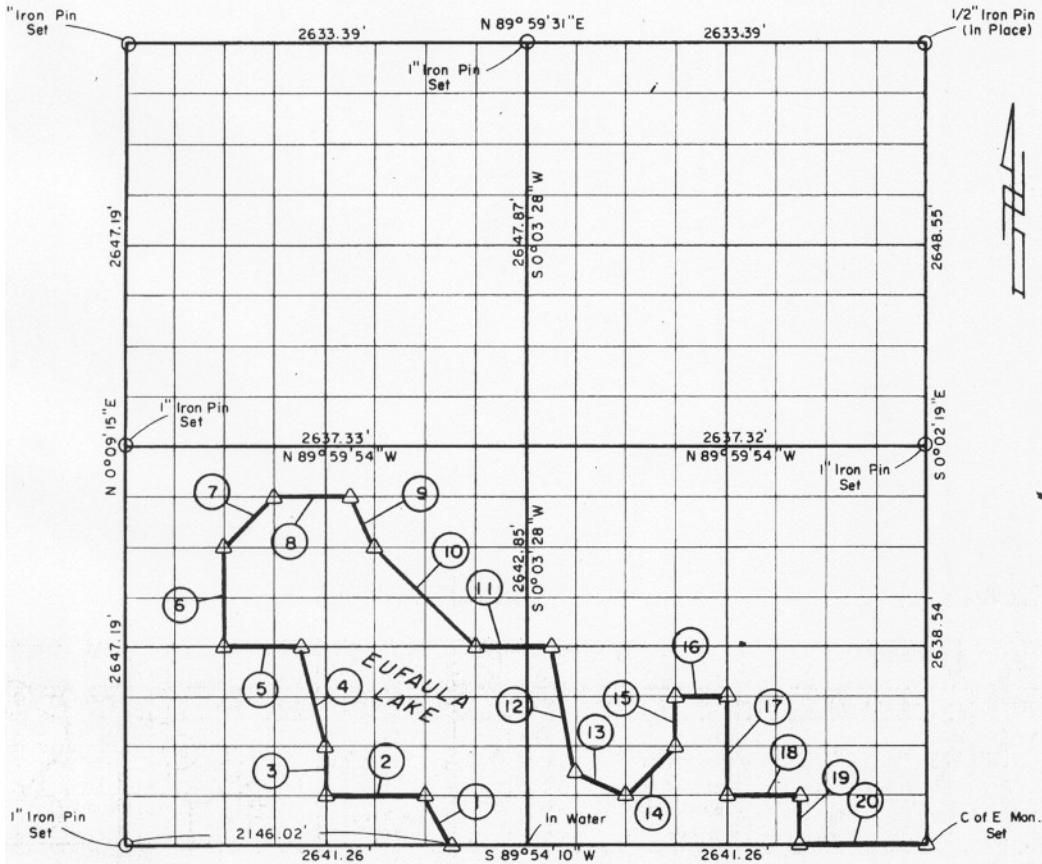


PARTIAL BOUNDARY SURVEYS
 EUFAULA LAKE, AREA "F"
 CANADIAN RIVER, OKLAHOMA

Performed Under Contract Number DACW 56-77-C-0256

SEC. 12, T. 10N., R. 15E., COUNTY MCINTOSH



Course No.	Distance	Bearing	Course No.	Distance	Bearing
1	368.97'	N 26° 29' 47" W	14	467.30'	N 44° 57' 49" E
2	660.19'	S 89° 54' 54" W	15	330.15'	N 0° 01' 18" E
3	330.63'	N 0° 06' 21" E	16	329.97'	N 89° 56' 23" E
4	681.10'	N 13° 54' 38" W	17	660.18'	S 0° 00' 34" W
5	494.87'	S 89° 57' 08" W	18	495.14'	N 89° 54' 54" E
6	661.53'	N 0° 07' 48" E	19	329.99'	S 0° 00' 30" E
7	467.61'	N 44° 58' 14" E	20	825.39'	N 89° 54' 10" E
8	494.59'	N 89° 59' 21" E			
9	369.12'	S 26° 26' 03" E			
10	932.93'	S 44° 55' 19" E			
11	494.87'	N 89° 57' 08" E			
12	841.77'	S 11° 15' 20" E			
13	368.77'	S 63° 28' 53" E			

Field Book No. E-1351 Date 1978

CERTIFICATE OF SURVEY

I Hereby Certify that the Above Plat is a true and Correct Representation of The Survey made by me

Jimmie Dale Pickle
 Jimmie Dale Pickle
 Registered Land Surveyor No. 78

CRAIG & KEITHLINE
 Consulting Engineers

For
 U.S. ARMY ENGINEER DISTRICT, TULSA
 CORPS OF ENGINEERS

SHEET 1 of 1

- Δ MONUMENT
- ORIGINAL CORNER
- IRON PIN

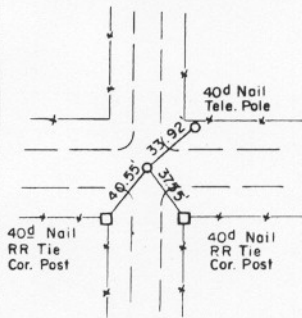
EUFAULA LAKE OKLAHOMA

SECTION AND QUARTER SECTION CORNER
REFERENCES FOR

SEC. 12, T. 10 N., R. 15 E.

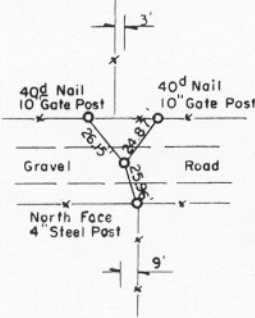
COUNTY - MCINTOSH

N.W. CORNER



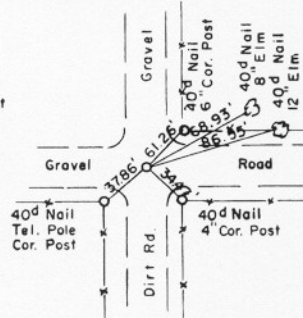
1" IRON PIN
(Set)

NORTH 1/4 COR.



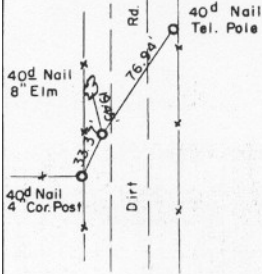
1" IRON PIN
(Set)

N.E. CORNER



1/2" IRON PIN
(In Place)

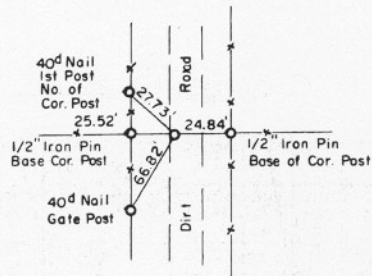
WEST 1/4 COR.



1" IRON PIN
(Set)

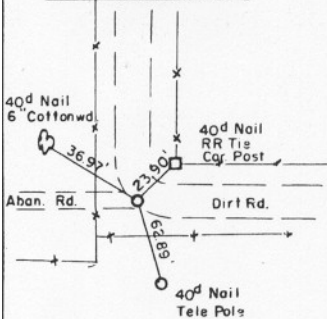
CENTER SEC.

EAST 1/4 COR.



1" IRON PIN
(Set)

S.W. CORNER

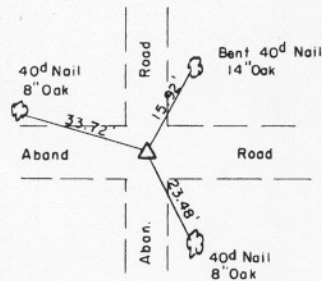


1" IRON PIN
(Set)

SOUTH 1/4 COR.

IN LAKE

S.E. CORNER



C of E MONUMENT
(Set)

