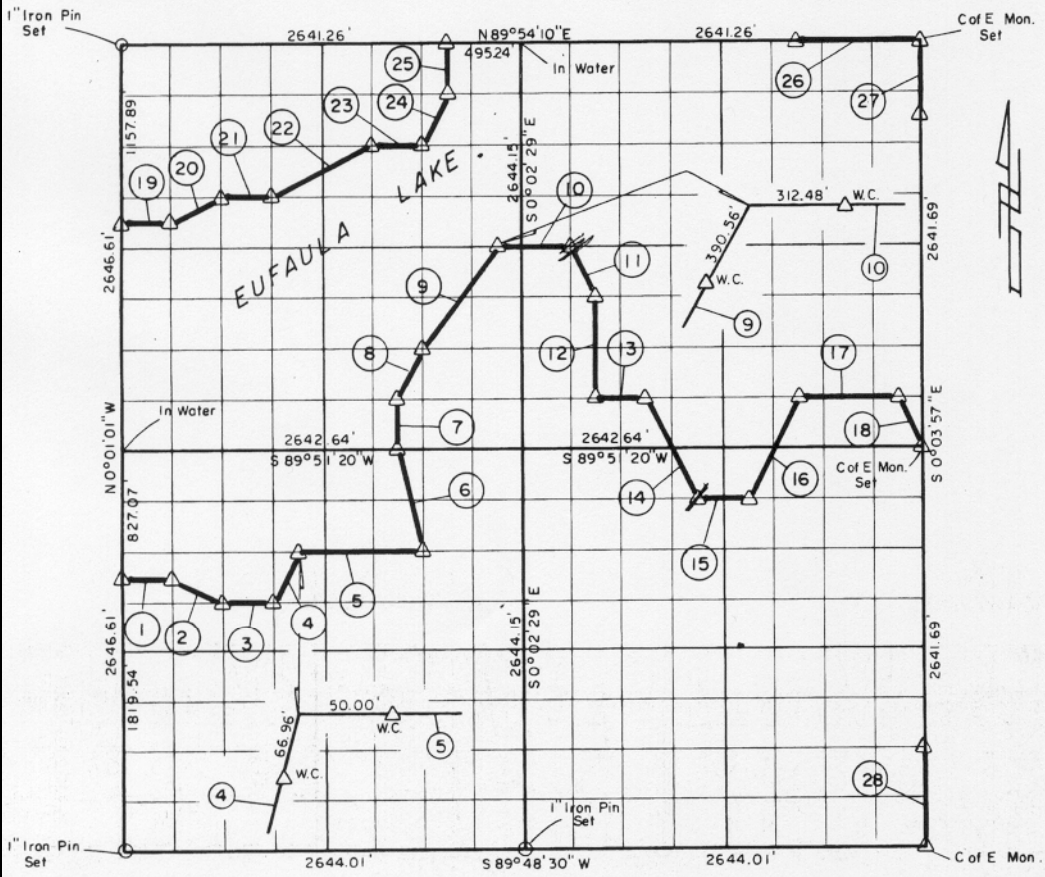


**PARTIAL BOUNDARY SURVEYS
EUFAULA LAKE, AREA "F"
CANADIAN RIVER, OKLAHOMA**

Performed Under Contract Number DACW 56-77-C-0256

SEC. 13, T. 10N., R. 15E., COUNTY MCINTOSH



Course No.	Distance	Bearing	Course No.	Distance	Bearing
1	330.38'	N 89° 50' 27" E	15	330.35'	N 89° 50' 59" E
2	369.11'	S 63° 32' 33" E	16	739.09'	N 26° 29' 28" E
3	330.39'	N 89° 50' 16" E	17	660.62'	N 89° 51' 41" E
4	370.01'	N 26° 29' 25" E	18	369.02'	S 26° 39' 07" E
5	825.93'	N 89° 50' 38" E	19	330.23'	N 89° 52' 55" E
6	681.20'	N 14° 04' 05" W	20	369.56'	N 63° 18' 02" E
7	330.62'	N 0° 02' 01" W	21	330.22'	N 89° 53' 06" E
8	369.82'	N 26° 29' 20" E	22	739.01'	N 63° 18' 29" E
9	826.77'	N 36° 46' 42" E	23	330.23'	N 89° 53' 28" E
10	495.36'	N 89° 52' 45" E	24	369.70'	N 26° 29' 17" E
11	369.22'	S 26° 36' 42" E	25	330.58'	N 0° 02' 12" W
12	660.92'	S 0° 02' 51" E	26	825.39'	N 89° 54' 10" E
13	330.31'	N 89° 51' 41" E	27	495.32'	S 0° 03' 57" E
14	738.28'	S 26° 37' 45" E	28	660.42'	S 0° 03' 57" E

Field Book No. E-1352 Date 1978

CERTIFICATE OF SURVEY

I Herby certify that the Above Plat is a True and Correct Representation of The Survey Made in Sec. 13, T. 10N., R. 15E.

Jimmie Dale Nickle
Jimmie Dale Nickle
Registered Land Surveyor No. 78

CRAIG & KEITHLINE
Consulting Engineers

For
U.S. ARMY ENGINEER DISTRICT, TULSA
CORPS OF ENGINEERS

SHEET 1 of 1

- Δ MONUMENT
- ORIGINAL CORNER
- IRON PIN

