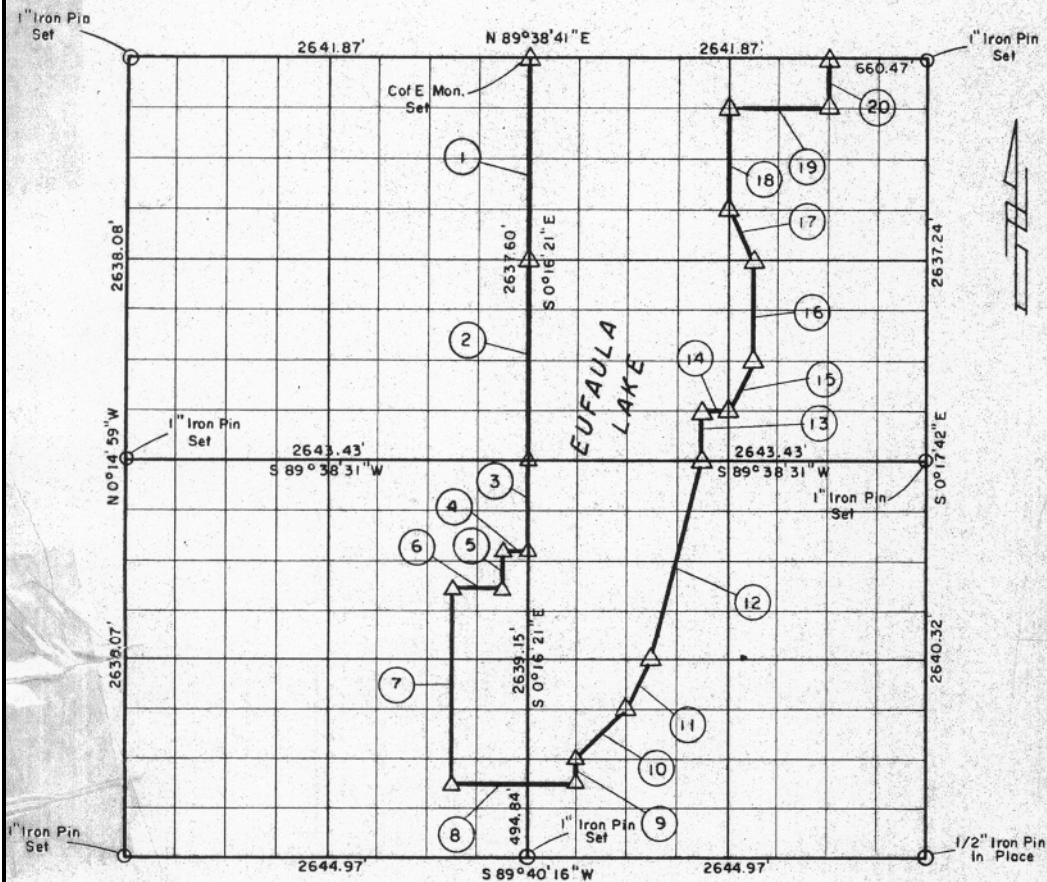


PARTIAL BOUNDARY SURVEYS
 EUFAULA LAKE, AREA "F"
 CANADIAN RIVER, OKLAHOMA

Performed Under Contract Number DACW 56-77-C-0256

SEC. 23, T. 10 N., R. 15 E., COUNTY MCINTOSH



Course No.	Distance	Bearing	Course No.	Distance	Bearing
1	1318.80'	S 0°16'21" E	14	165.20'	N 89°38'32" E
2	1318.80'	S 0°16'21" E	15	368.95'	N 26°18'57" E
3	577.31'	S 0°16'21" E	16	659.35'	N 0°17'11" W
4	165.24'	S 89°38'54" W	17	368.56'	N 26°54'33" W
5	247.41'	S 0°16'16" E	18	659.36'	N 0°17'01" W
6	330.49'	S 89°39'04" W	19	660.52'	N 89°38'40" E
7	1319.48'	S 0°16'05" E	20	329.67'	N 0°17'22" W
8	826.47'	N 89°39'56" E			
9	164.96'	N 0°16'31" W			
10	467.29'	N 44°44'42" E			
11	369.18'	N 26°18'55" E			
12	1360.92'	N 13°46'24" E			
13	329.68'	N 0°16'56" W			

Field Book No. E-1354 Date 1978

CERTIFICATE OF SURVEY

I hereby certify that the above plat is a true and correct representation of the survey made in Sec. 23, T. 10 N., R. 15 E.,

Limmie Dale Nickle
 Limmie Dale Nickle
 Registered Land Surveyor No. 78

CRAIG & KEITHLINE
 Consulting Engineers

For
 U.S. ARMY ENGINEER DISTRICT, TULSA
 CORPS OF ENGINEERS

Δ MONUMENT
 □ ORIGINAL CORNER
 ○ IRON PIN

SHEET 1 of 1

