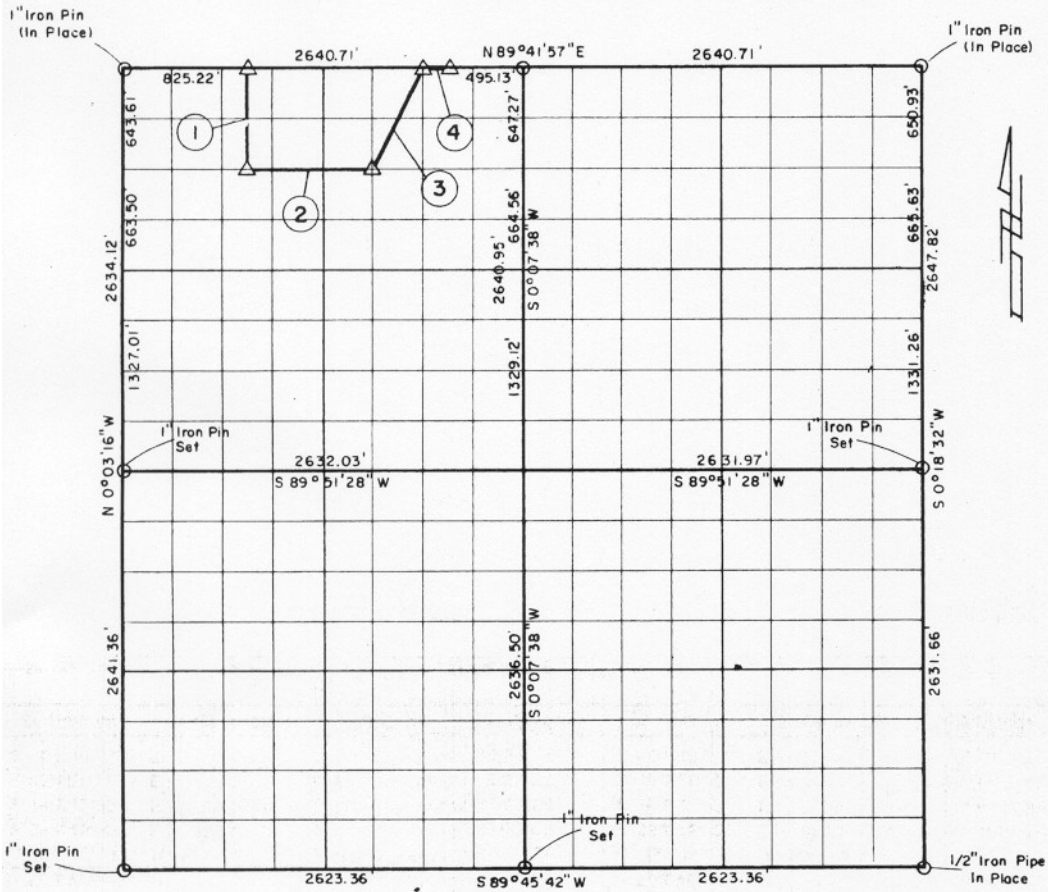


PARTIAL BC IDARY SURVEYS
EUFAULA LAKE, AREA "F"
CANADIAN RIVER, OKLAHOMA

Performed Under Contract Number DACW 56-77-C-0256

SEC. 5 , T. 10 N., R. 15 E., COUNTY MCINTOSH



Course No.	Distance	Bearing	Course No.	Distance	Bearing
1	644.76'	S 0° 00' 08" W			
2	824.52'	N 89° 47' 07" E			
3	727.16'	N 27° 03' 12" E			
4	165.04'	N 89° 41' 57" E			
	2361.48				

Field Book No. E-1350 Date 1978

CERTIFICATE OF SURVEY

CRAIG & KEITHLINE
Consulting Engineers

For
U.S. ARMY ENGINEER DISTRICT, TULSA
CORPS OF ENGINEERS

SHEET 1 of 1

I Hereby Certify That The Above Plat is a True and Correct Representation of The Survey Made in Sec. 5, T. 10 N., R. 15 E.

Jimmie Dale Nickle
Jimmie Dale Nickle
Registered Land Surveyor No. 78

Δ MONUMENT
 □ ORIGINAL CORNER
 ○ IRON PIN

EUFAUL LAKE OKLAHOMA

SECTION AND QUARTER SECTION CORNER .
REFERENCES FOR

SEC. 5 , T10N, R15E COUNTY- MCINTOSH

