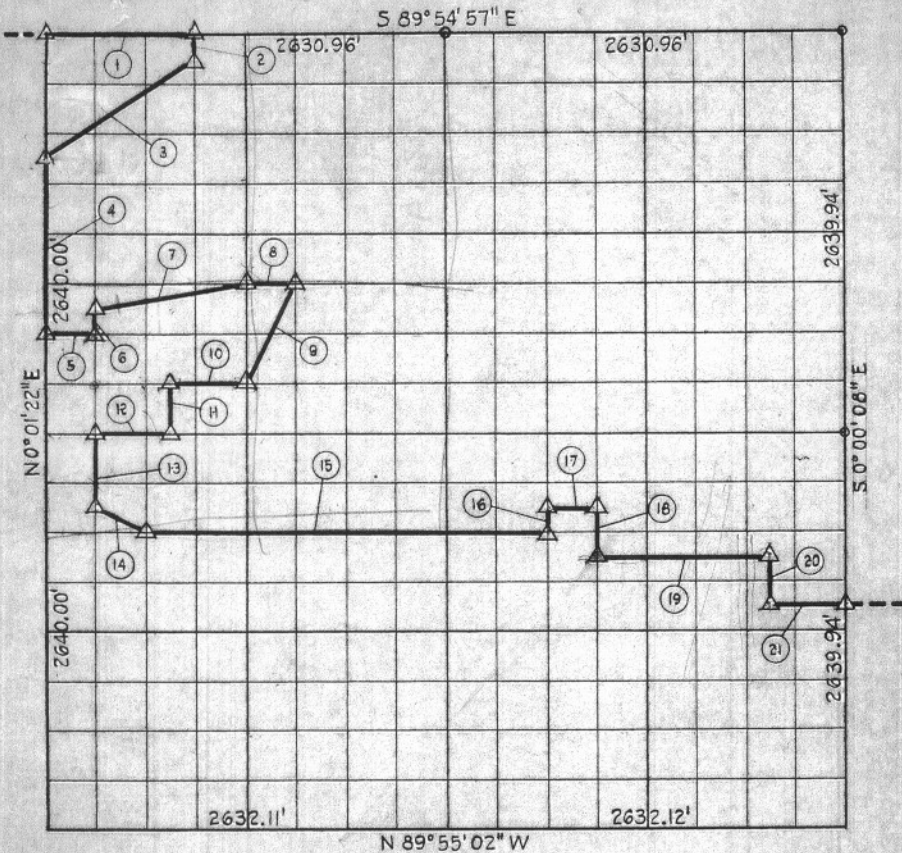


SEC. 11 - T 10 N - R 16 E CINTOSH COUNTY



Course No.	Distance	Bearing	Course No.	Distance	Bearing
1	986.61	S 89° 54' 57" E	12	493.45	N 89° 55' 00" W
2	165.00	S 0° 01' 05" W	13	494.91	S 0° 01' 17" W
3	1186.65	S 56° 17' 05" W	14	368.29	S 63° 18' 00" E
4	1155.00	S 0° 01' 22" W	15	2631.68	S 89° 55' 00" E
5	328.93	S 89° 54' 59" E	16	165.00	N 0° 00' 26" E
6	165.00	N 0° 01' 17" E	17	328.96	S 89° 55' 00" E
7	1000.26	N 80° 35' 20" E	18	330.00	S 0° 00' 20" W
8	328.92	S 89° 54' 58" E	19	1151.36	S 89° 55' 01" E
9	737.08	S 26° 31' 11" W	20	329.99	South
10	493.40	N 89° 54' 59" W	21	493.46	S 89° 55' 01" E
11	330.00	S 0° 01' 08" W			

13,663.75

Book No. E-1036 Date: July, 1965

183

I, Charles J. Finklea, A Registered Professional Engineer, do hereby certify that the above is a true and accurate survey of Sec. 11-T 10 N-R 16 E as made under my supervision.

*Charles J. Finklea*  
 Charles J. Finklea  
 Reg. Prof. Eng'r. No. 1063