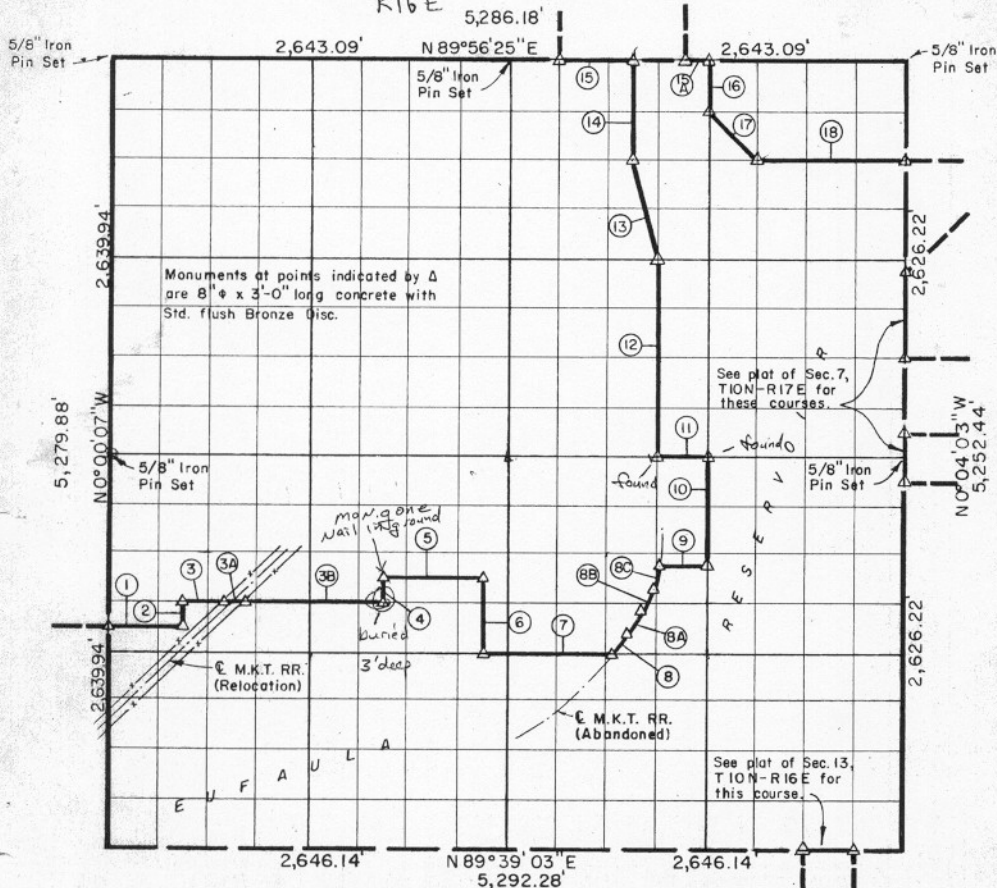


SEC. 12-TION-R16E McINTOSH COUNTY, OKLAHOMA

R16E



Course No.	Distance	Bearing	Course No.	Distance	Bearing
1	495.97'	N89°44'02\" E	15-A	165.19'	N89°56'52\" E
2	164.92'	N 0°00'29\" W	16	328.70'	S 0°03'04\" E
3	268.36'	N89°44'36\" E	17	465.93'	S 45° 13' 09\" E
3-A	294.94'	N89°44'36\" E	18	991.31'	N89°54'38\" E
3-B	759.28'	N89°44'36\" E			
4	164.70'	N 0°01'29\" W			
5	661.27'	N89°45'10\" E			
6	493.80'	S 0°01'58\" E			
7	853.70'	N89°43'29\" E			
8	158.06'	N36°46'27\" E			
8-A	172.38'	N31°50'17\" E			
8-B	164.98'	N26°42'09\" E			
8-C	173.08'	N21°46'31\" E			
9	309.15'	N89°45'43\" E			
10	737.14'	N 0°03'04\" W			
11	330.57'	S89°47'57\" W			
12	1,313.25'	N 0°02'49\" W			
13	677.95'	N 14°09'08\" W			
14	657.73'	N 0°02'41\" W			
15	495.57'	S89°56'52\" W			

11, 297.93

Book No. E-984 Date: November 1964

I, Charles R. Keithline, a Registered Professional Engineer in the State of Oklahoma, do hereby certify that the above plat is a true and accurate survey of Sec. 12-TION-R16E as made under my supervision.

184
 Charles R. Keithline
 CHARLES R. KEITHLINE
 Reg. Prof. Engr. No. 2834 (Okla.)