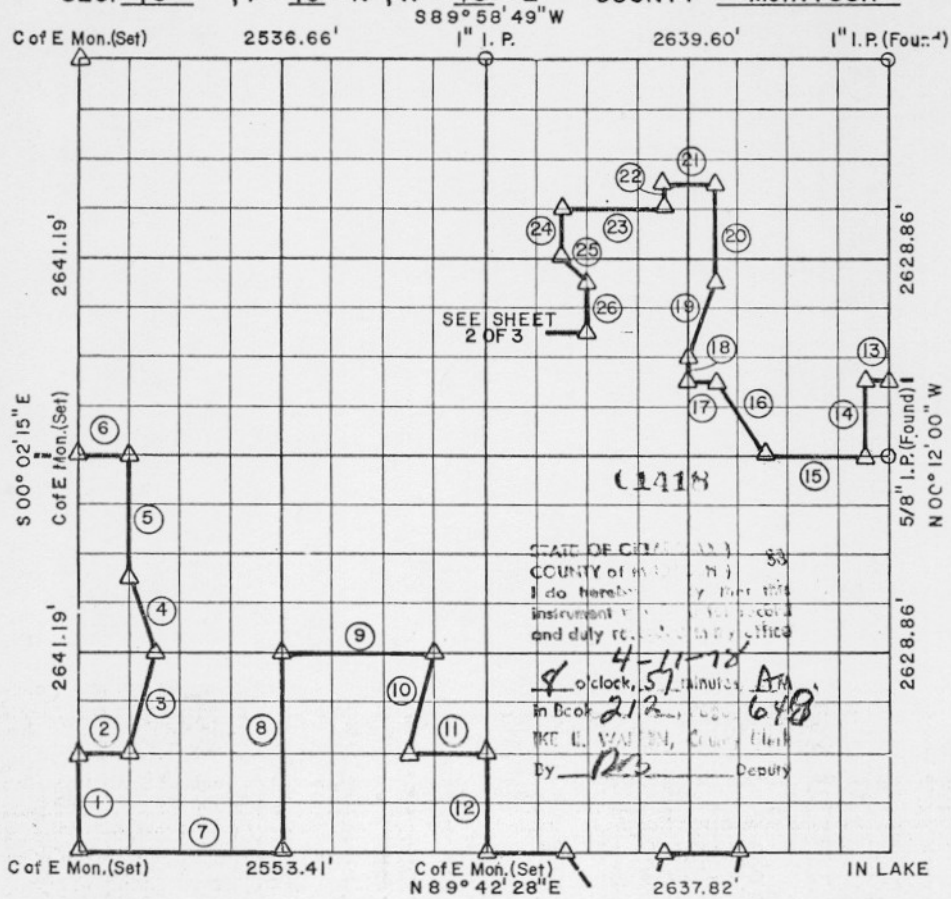


648

PARTIAL BOUNDARY SURVEYS
EUFULA LAKE
CANADIAN RIVER, OKLAHOMA

Performed Under Contract Number DACW 56-77-C-0269

SEC. 18, T-10-N, R-16-E COUNTY McINTOSH



STATE OF OKLAHOMA
COUNTY of [unclear]
I do hereby certify that this
instrument is a true and correct
and duly recorded copy of the original
4-11-78
at [unclear] 57 minutes AM
in Book 212, Page 648
W. L. WATSON, Surveyor
By [unclear] Deputy

Course No.	Distance	Bearing	Course No.	Distance	Bearing
1	660.30'	N00°02'15"W	14	492.98'	S00°12'05"E
2	308.07'	N89°44'29"E	15	659.68'	S89°50'37"W
3	678.15'	N13°01'11"E	16	593.77'	N33°57'13"W
4	518.05'	N17°21'04"W	17	164.93'	N89°52'09"E
5	825.14'	N00°05'08"W	18	164.50'	N00°12'35"W
6	306.42'	S89°50'38"W	19	520.03'	N18°16'58"E
7	1234.50'	N89°42'28"E	20	657.90'	N00°12'31"W
8	1319.12'	N00°13'45"W	21	329.91'	S89°56'15"W
9	989.35'	N89°46'32"E	22	164.52'	S00°12'40"E
10	679.40'	S13°49'24"W	23	659.82'	S89°55'44"W
11	494.63'	N89°44'30"E	24	329.25'	S00°12'57"E
12	658.78'	S00°13'10"E	25	233.06'	S45°15'57"E
13	164.93'	S89°52'09"W	26	329.20'	S00°12'53"E

CERTIFICATE OF SURVEY Field Book No. E-1358 Date MARCH, 1978 197

I HEREBY CERTIFY THAT THE EUGENE R. BUTLER ASSOCIATES, INC.
ABOVE PLAT IS A TRUE AND CORRECT REPRESENTATION OF THE SURVEY MADE IN SECTION 18, T-10-N, R-16-E, McINTOSH COUNTY, OKLAHOMA.
Under the Supervision of
U.S. ARMY ENGINEER DISTRICT, TULSA
CORPS OF ENGINEERS
SHEET 1 of 3

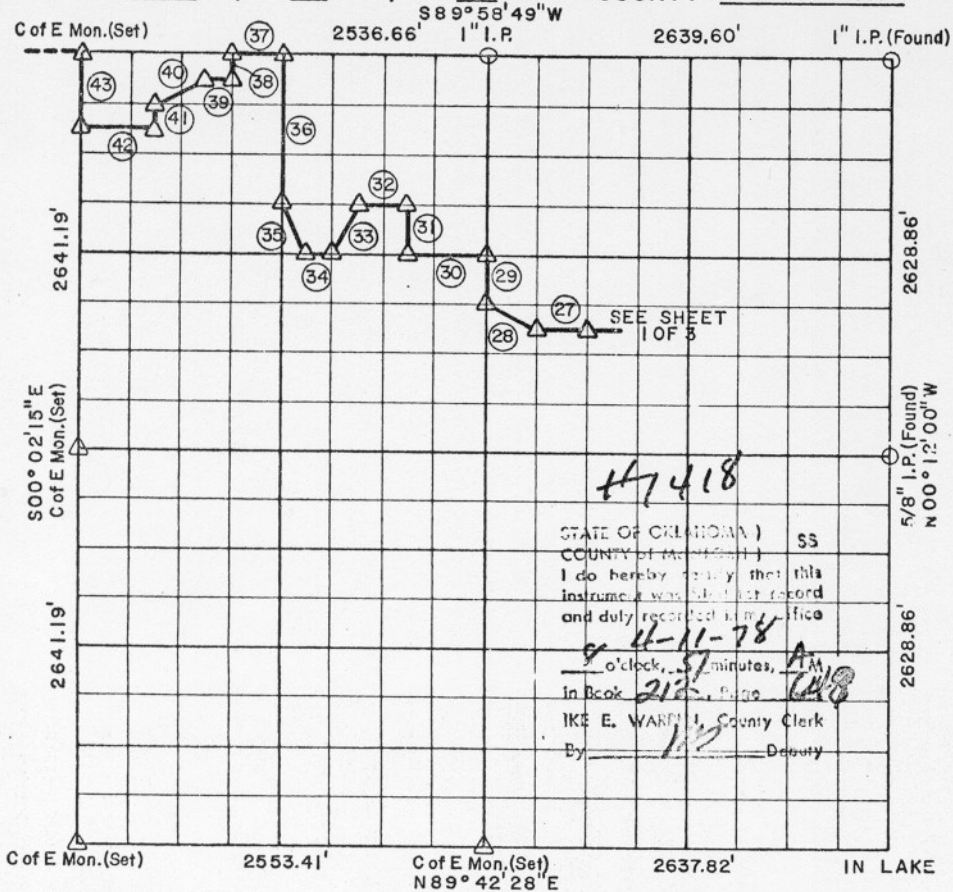
- LEGEND
- ▲ MONUMENT
 - ORIGINAL CORNER
 - IRON PIN
 - * COMPUTED DISTANCE

PARTIAL BOUNDARY SURVEYS
EUFAULA LAKE
CANADIAN RIVER, OKLAHOMA

649

Performed Under Contract Number DACW 56-77-C-0269

SEC. 18, T-10-N, R-16-E COUNTY McINTOSH



Course No.	Distance	Bearing	Course No.	Distance	Bearing
27	329.88'	S 89° 53' 11" W	40	368.41'	S 63° 22' 24" W
28	368.97'	N 63° 36' 10" W	41	165.00'	S 00° 13' 45" E
29	329.39'	N 00° 13' 10" W	42	393.51'	S 89° 58' 46" W
30	494.84'	S 89° 54' 42" W	43	495.00'	N 00° 02' 15" W
31	329.54'	N 00° 13' 24" W			
32	329.91'	S 89° 55' 44" W			
33	368.25'	S 26° 23' 04" W			
34	164.95'	S 89° 54' 42" W			
35	369.10'	N 26° 46' 24" W			
36	989.36'	N 00° 13' 45" W			
37	330.00'	S 89° 58' 49" W			
38	165.00'	S 00° 13' 45" E			
39	165.00'	S 89° 58' 49" W			

CERTIFICATE OF SURVEY

Field Book No. E-1358

Date MARCH, 1978

197

I HEREBY CERTIFY THAT THE EUGENE R. BUTLER ASSOCIATES, INC. ABOVE PLAT IS A TRUE AND CORRECT REPRESENTATION OF THE SURVEY MADE IN SECTION 18, T-10-N, R-16-E, McINTOSH COUNTY, OKLAHOMA.

EUGENE R. BUTLER ASSOCIATES, INC.

Under the Supervision of

U.S. ARMY ENGINEER DISTRICT, TULSA
CORPS OF ENGINEERS

LEGEND

- Δ MONUMENT
- ORIGINAL CORNER
- IRON PIN
- * COMPUTED DISTANCE

Eugene R. Janney
REGISTERED LAND SURVEYOR

SHEET 2 of 3

650

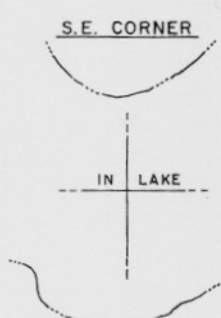
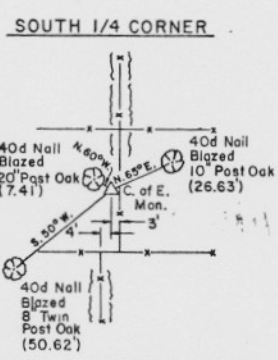
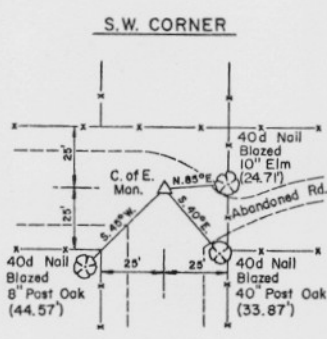
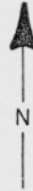
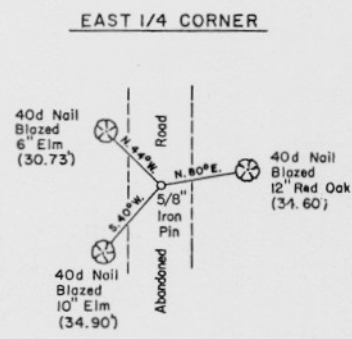
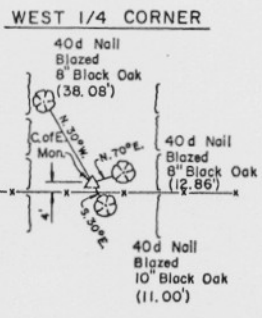
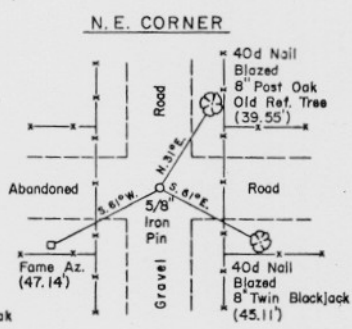
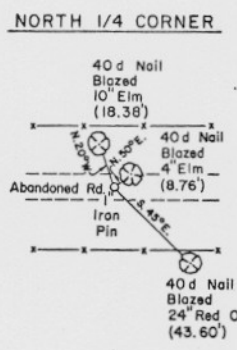
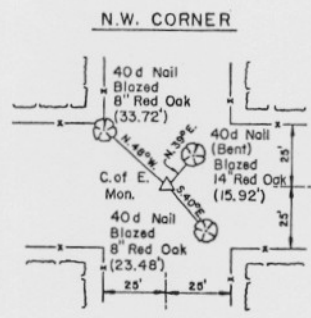
418

EUFULA LAKE
CANADIAN RIVER, OKLAHOMA

STATE OF OKLAHOMA)
COUNTY of MCINTOSH) SS
I do hereby certify that this
instrument was filed for record
and duly recorded in my office
on 4-11-78
8 o'clock, 57 minutes, A.M.
in Book 212, Page 643
by E. WARREN, County Clerk
By MB Deputy

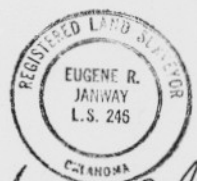
SECTION AND QUARTER SECTION CORNER
REFERENCES FOR

SEC.-18, TION, R16E MCINTOSH COUNTY



BUTLER ASSOCIATES, INC.

Scale: 1" = 50'
Date: March, 1978
Field Book No. E-1358



Eugene R. Janway
Registered Land Surveyor

- LEGEND
- △ Monument
 - Original Corner
 - Iron Pin