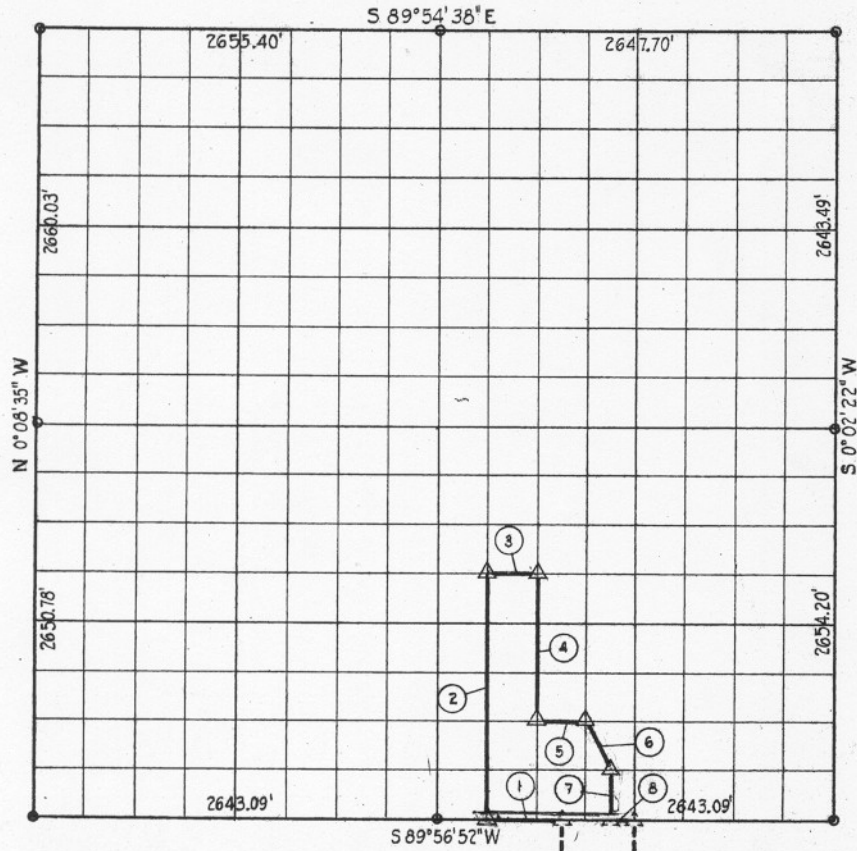


C. 1 - T 10 N - R 16 CINTOSH COUNTY



| Course No. | Distance | Bearing         | Course No. | Distance | Bearing |
|------------|----------|-----------------|------------|----------|---------|
| 1          | 495.58   | S 89° 56' 52" W |            |          |         |
| 2          | 1657.94  | N 0° 00' 15" W  |            |          |         |
| 3          | 330.87   | N 89° 55' 29" E |            |          |         |
| 4          | 994.75   | S 0° 00' 08" W  |            |          |         |
| 5          | 330.46   | N 89° 56' 19" E |            |          |         |
| 6          | 370.35   | S 26° 29' 05" E |            |          |         |
| 7          | 331.66   | S 0° 00' 41" W  |            |          |         |
| 8          | 165.19   | N 89° 56' 52" E |            |          |         |

4,1676.80

Book No. E-1032 Date: July, 1965

169

I, Charles J. Finklea, A Registered Professional Engineer, do hereby certify that the above is a true and accurate survey of Sec. 1, T 10 N, R 16 E as made under my supervision.

*Charles J. Finklea*  
 Charles J. Finklea  
 Reg. Prof. Eng'r. No. 1063