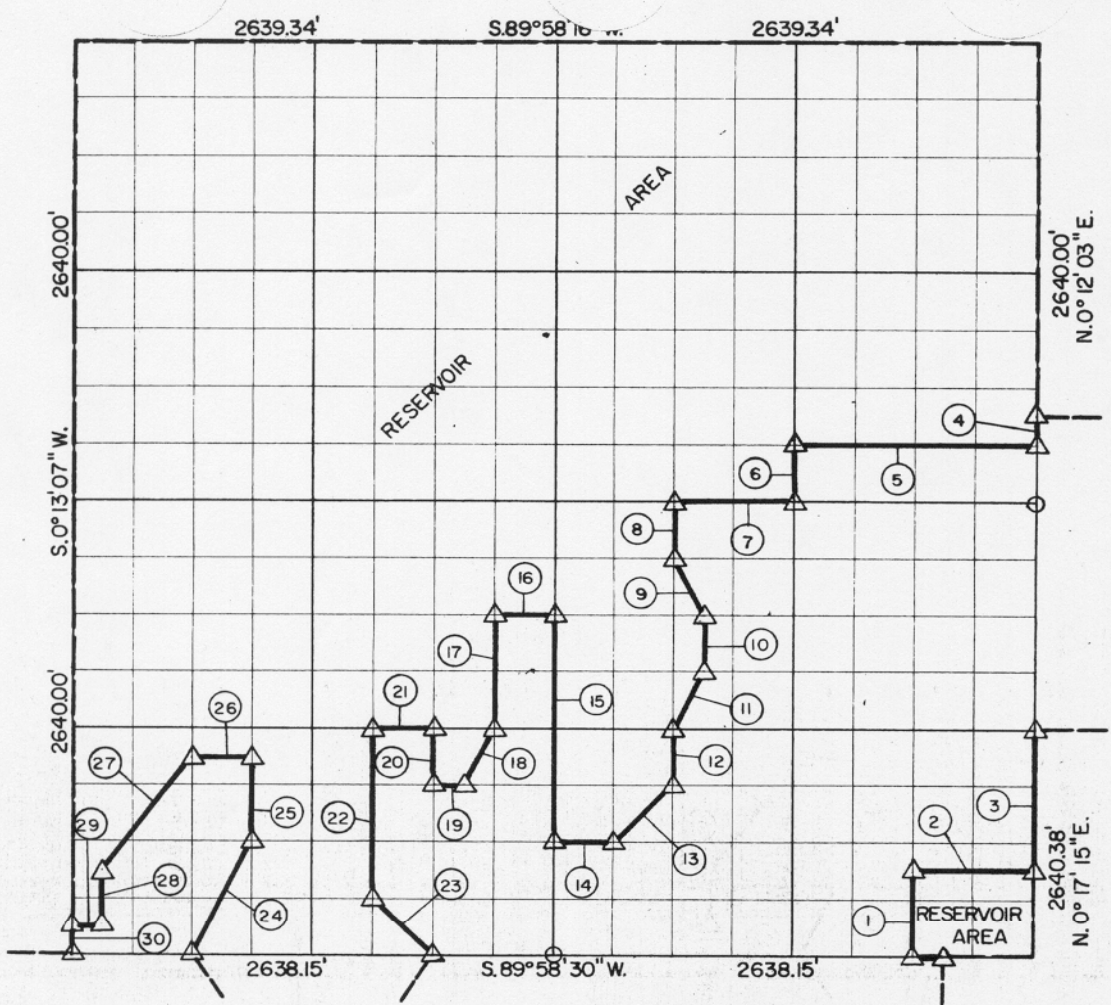


14,934.79

22, TION, R 16 SINTOSH COUNTY



Course No.	Distance	Bearing	Course No.	Distance	Bearing
1	495.05'	N 0° 16' 24" E	20	330.01'	N 0° 13' 42" E
2	659.66'	N 89° 58' 27" E	21	329.81'	S 89° 58' 23" W
3	825.13'	N 0° 17' 15" E	22	990.03'	S 0° 13' 36" W
4	165.00'	S 0° 12' 03" W	23	465.54'	S 44° 52' 57" E
5	1320.29'	S 89° 58' 16" W	24	739.10'	N 26° 43' 21" E
6	330.00'	S 0° 12' 58" W	25	495.02'	N 0° 13' 26" E
7	660.19'	S 89° 58' 16" W	26	164.90'	S 89° 58' 24" W
8	330.03'	S 0° 14' 44" W	27	935.13'	S 45° 04' 45" W
9	368.28'	S 26° 22' 25" E	28	330.00'	S 0° 13' 08" W
10	330.03'	S 0° 14' 56" W	29	164.88'	S 89° 58' 29" W
11	369.68'	S 26° 45' 03" W	30	165.00'	S 0° 13' 07" W
12	330.03'	S 0° 14' 44" W			
13	467.67'	S 45° 05' 22" W			
14	329.85'	S 89° 58' 26" W			
15	1320.09'	N 0° 13' 53" E			
16	329.83'	S 89° 58' 18" W			
17	660.03'	S 0° 13' 47" W			
18	369.61'	S 26° 43' 58" W			
19	164.92'	S 89° 58' 24" W			

14,934.79

Book No. E-1010

Date: August, 1965

213

I, James E. Curry, a Registered Professional Engineer, do hereby certify that the above plat is a true and accurate survey of Sec. 22, TION, R16E as made under my supervision.

LEGEND

- 5/8" Rods w/Caps
- △ C. of E. Mon.
- Measured Line
- - - Calculated Line
- Orig. Cor. Stone

James E. Curry
 JAMES E. CURRY
 Reg. Prof. Eng'r. No. 1872