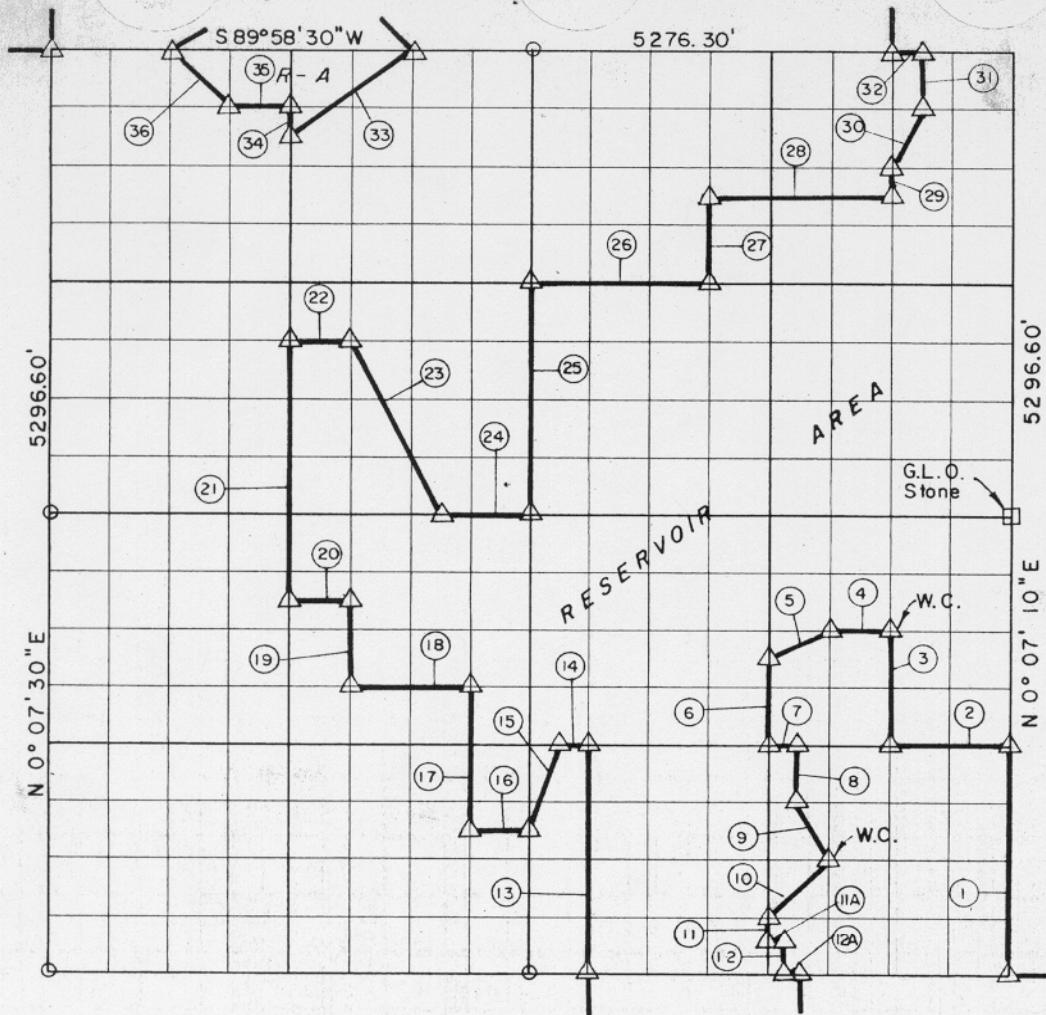


27, TION, R 16: INTOSH COUNTY



Course No.	Distance	Bearing	Course No.	Distance	Bearing
1	1324.15'	N 0° 07' 10" E	18	659.58'	S 89° 58' 30" W
2	659.58'	S 89° 58' 30" W	19	496.56'	N 0° 07' 25" E
3	662.07'	N 0° 07' 12" E	20	329.79'	S 89° 58' 30" W
4	329.79'	S 89° 58' 30" W	21	1489.67'	N 0° 07' 25" E
5	369.36'	S 63° 21' 10" W	22	329.77'	N 89° 58' 30" E
6	496.56'	S 0° 07' 15" W	23	1108.34'	S 26° 23' 03" E
7	164.90'	N 89° 58' 30" E	24	494.68'	N 89° 58' 30" E
8	331.04'	S 0° 07' 15" W	25	1324.15'	N 0° 07' 20" E
9	369.46'	S 26° 23' 13" E	26	989.33'	N 89° 58' 30" E
10	467.87'	S 44° 56' 25" W	27	496.56'	N 0° 07' 15" E
11	121.04'	S 0° 07' 15" W	28	989.32'	N 89° 58' 30" E
11-A	60.00'	N 89° 58' 30" E	29	165.52'	N 0° 07' 12" E
12	210.00'	S 0° 07' 15" W	30	370.20'	N 26° 34' 07" E
12-A	104.90'	N 89° 58' 30" E	31	331.04'	N 0° 07' 12" E
13	1324.15'	N 0° 07' 20" E	32	164.88'	S 89° 58' 30" W
14	164.90'	S 89° 58' 30" W	33	826.61'	S 53° 03' 08" W
15	523.63'	S 18° 28' 42" W	34	165.52'	N 0° 07' 25" E
16	329.80'	S 89° 58' 30" W	35	329.77'	S 89° 58' 30" W
17	827.59'	N 0° 07' 20" E	36	466.66'	N 44° 50' 25" W

Book No. E - 933

Date: March, 1965

20,368.74 230

I, James E. Curry, a Registered Professional Engineer, do hereby certify that the above plat is a true and accurate survey of Sec. 27, TION, R 16E as made under my supervision.

LEGEND

- 5/8" Rods w/Caps
- △ C. of E. Mon.
- Measured Line
- - - Calculated Line

James E. Curry
 JAMES E. CURRY
 Reg. Prof. Eng'r. No. 1872