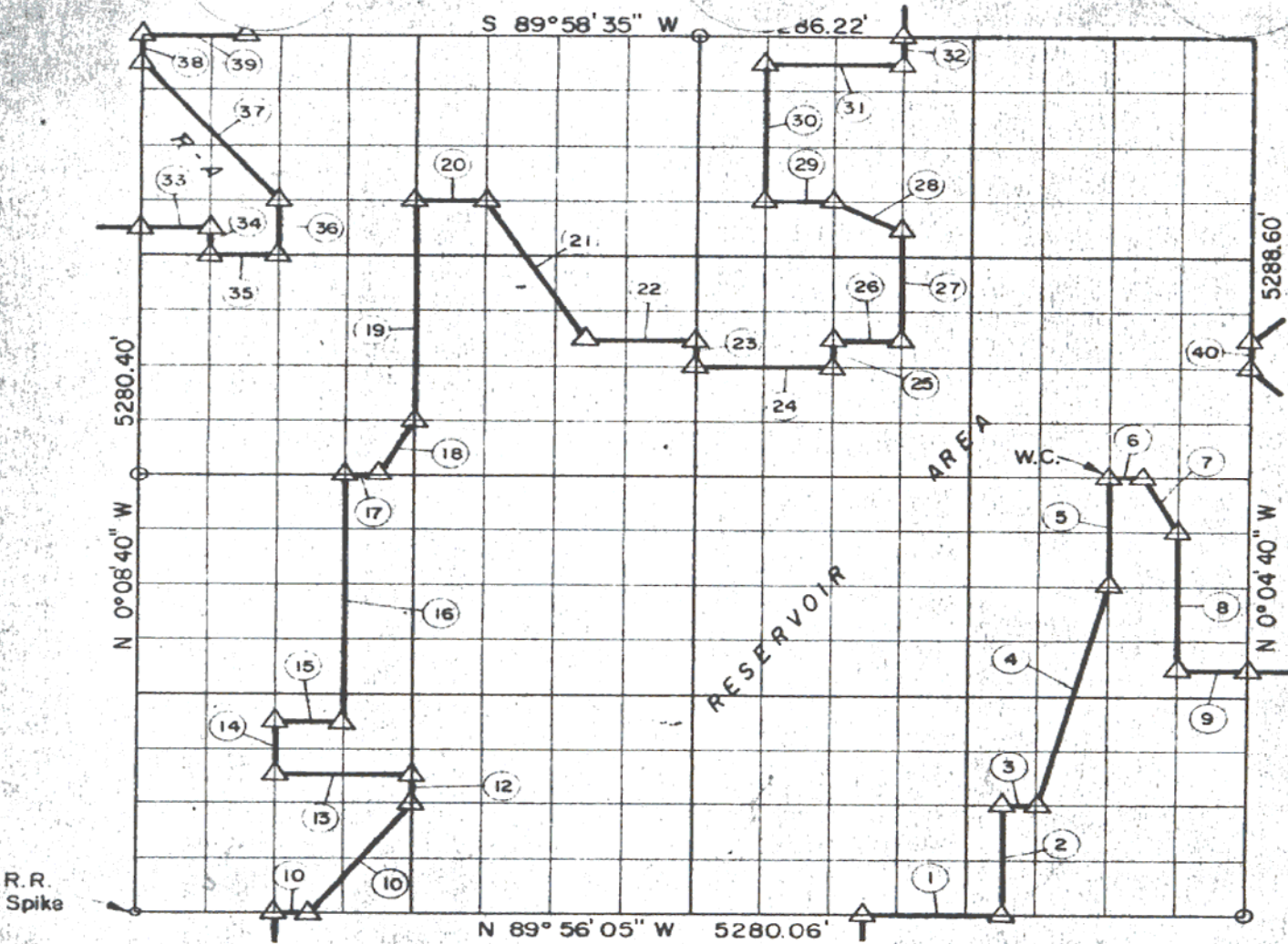


29, TION, R 16 E, N 17 TOSH COUNTY



Course No.	Distance	Bearing	Course No.	Distance	Bearing
1	660.01'	S 89° 56' 05" E	21	963.67'	S 31° 03' 31" E
2	660.85'	N 0° 05' 32" W	22	495.39'	S 89° 59' 35" E
3	165.03'	S 89° 56' 45" E	23	165.14'	S 0° 06' 40" E
4	1361.67'	N 13° 56' 27" E	24	660.49'	S 89° 59' 25" E
5	660.95'	N 0° 05' 10" W	25	165.17'	N 0° 06' 10" W
6	165.10'	S 89° 58' 45" E	26	330.26'	S 89° 59' 35" E
7	369.71'	S 26° 36' 19" E	27	660.76'	N 0° 05' 55" W
8	826.26'	S 0° 04' 55" E	28	369.55'	N 63° 27' 24" W
9	330.11'	S 89° 57' 35" E	29	330.32'	S 89° 59' 35" W
10	165.00'	S 89° 56' 05" E	30	825.79'	N 0° 06' 25" W
11	823.93'	N 36° 47' 57" E	31	660.75'	N 89° 58' 45" E
12	165.08'	N 0° 07' 40" W	32	165.19'	N 0° 05' 55" W
13	660.13'	N 89° 56' 55" W	33	330.31'	N 89° 59' 45" E
14	330.09'	N 0° 08' 10" W	34	165.03'	S 0° 08' 25" E
15	330.09'	S 89° 57' 15" E	35	330.29'	N 89° 59' 55" E
16	1485.54'	N 0° 07' 55" W	36	330.09'	N 0° 08' 10" W
17	165.10'	S 89° 58' 45" E	37	1058.20'	N 38° 46' 29" W
18	368.75'	N 26° 28' 11" E	38	165.00'	N 0° 08' 40" W
19	1320.61'	N 0° 07' 40" W	39	495.58'	N 89° 58' 35" E
20	330.32'	N 89° 59' 35" E	40	165.27'	N 0° 04' 40" W

Book No. E-935

Date: March, 1965

20,176.58 228

LEGEND

- 5/8" Rods w/Caps
- △ C. of E. Mon.
- Measured Line
- - - - - Calculated Line

I, James E. Curry, a Registered Professional Engineer, do hereby certify that the above plat is a true and accurate survey of Sec. 29, T10N, R16E as made under my supervision.

James E. Curry
JAMES E. CURRY
 Reg. Prof. Eng'r. No. 1872