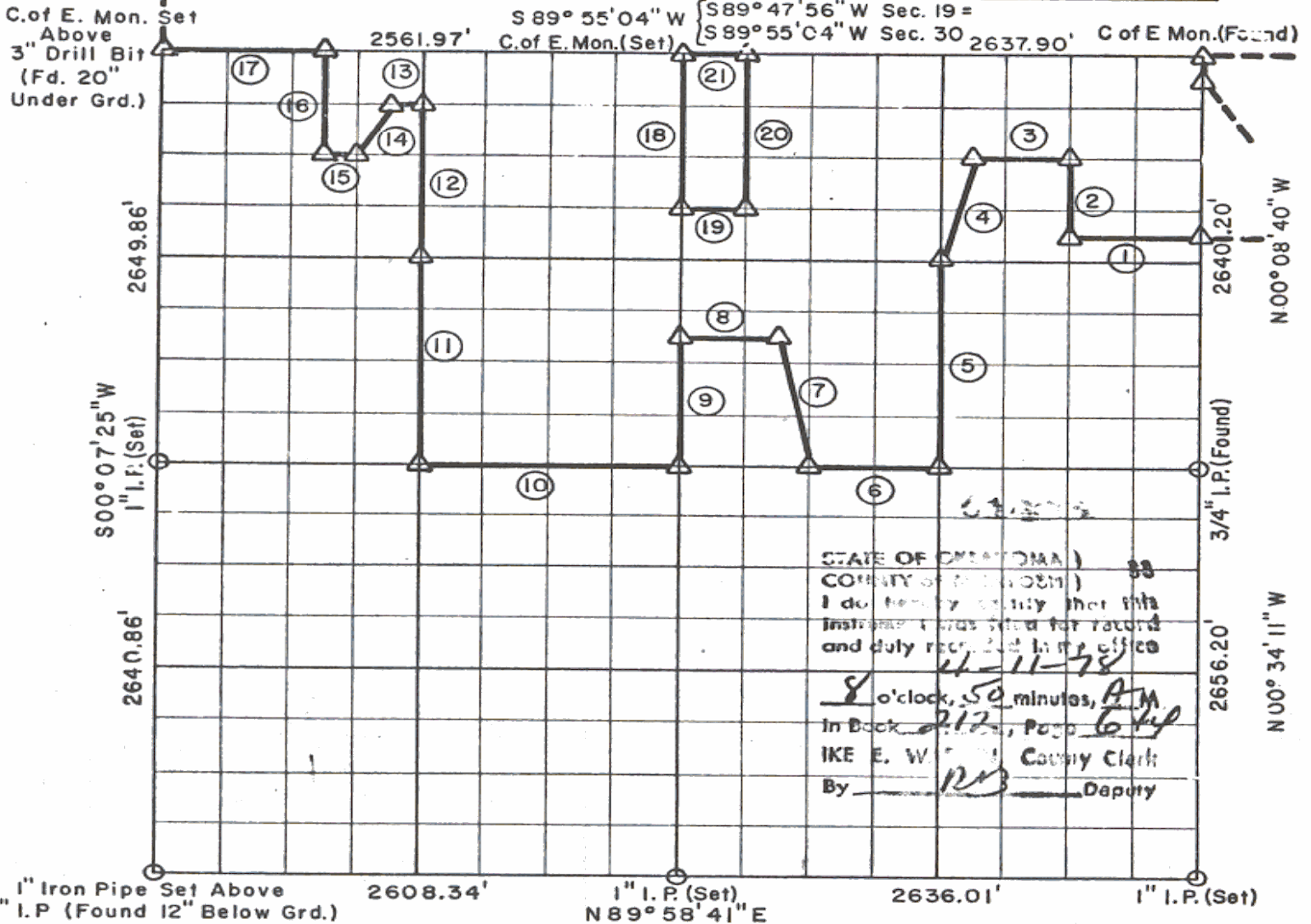


644

PARTIAL BOUNDARY SURVEYS
EUFULA LAKE
CANADIAN RIVER, OKLAHOMA

Performed Under Contract Number DACW 56-77-C-0269

SEC. 30 , T-10-N , R-16-E COUNTY McINTOSH



STATE OF OKLAHOMA)
COUNTY OF MCINTOSH)
I do hereby certify that this
instrument was filed for record
and duly recorded in my office
this 11-11-78
at 8 o'clock, 50 minutes, A.M.
In Book 212, Page 644
IKE E. W. County Clerk
By RD Deputy

Course No.	Distance	Bearing	Course No.	Distance	Bearing
1	658.29'	S89°52'09"W	14	365.42'	S24°58'03"W
2	495.26'	N00°12'11"W	15	156.12'	S89°53'27"W
3	494.10'	S89°53'18"W	16	662.09'	N00°11'47"W
4	680.42'	S13°44'47"W	17	776.89'	S89°55'04"W
5	1321.30'	S00°15'41"E	18	991.90'	S00°22'42"E
6	656.78'	S89°48'41"W	19	329.23'	N89°52'42"E
7	842.86'	N11°34'04"W	20	991.67'	N00°20'57"W
8	493.21'	S89°50'40"W	21	329.74'	S89°55'04"W
9	826.59'	S00°22'42"E			
10	1318.48'	S89°48'41"W			
11	1323.76'	N00°23'18"W			
12	992.82'	N00°23'18"W			
13	155.75'	S89°54'15"W			

CERTIFICATE OF SURVEY

I HEREBY CERTIFY THAT THE ABOVE PLAT IS A TRUE AND CORRECT REPRESENTATION OF THE SURVEY MADE IN SECTION 30 T 10 N R 16 E, McINTOSH COUNTY, OKLAHOMA.

Engineer R January
REGISTERED LAND SURVEYOR

Field Book No. E-1356 Date MARCH, 1978

EUGENE R. BUTLER ASSOCIATES, INC.
Under the Supervision of
U.S. ARMY ENGINEER DISTRICT, TULSA
CORPS OF ENGINEERS



- LEGEND
- ▲ MONUMENT
 - ORIGINAL CORNER
 - IRON PIN
 - * COMPUTED DISTANCE

