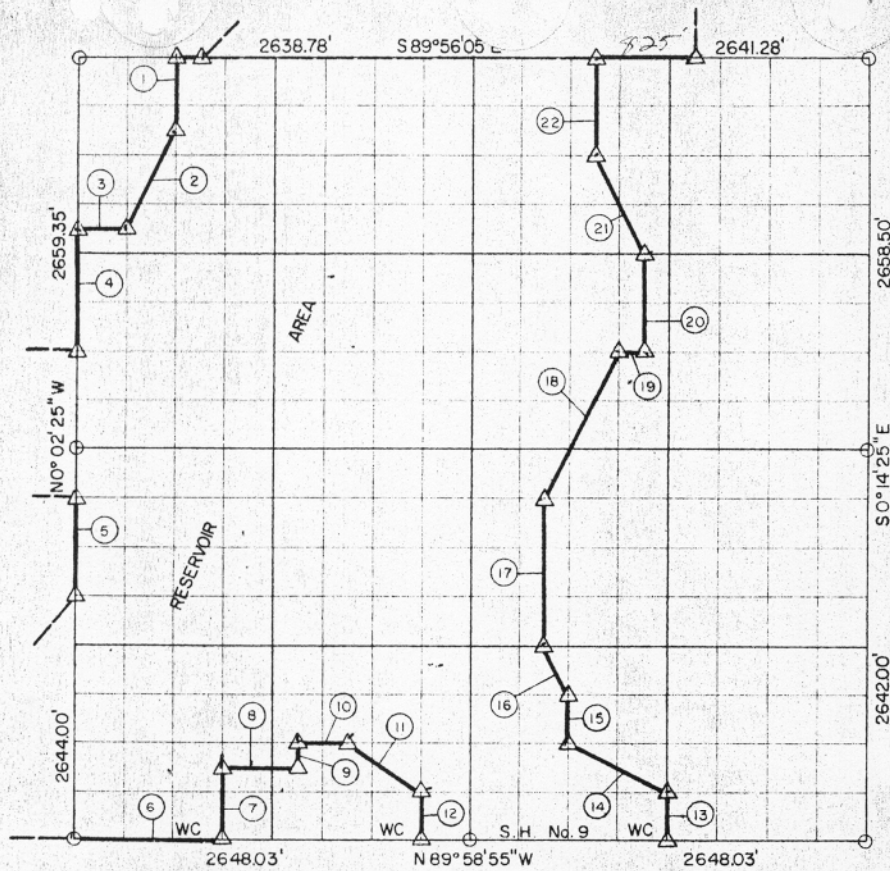


32, TION, R 16 McINTOSH COUNTY



Course No.	Distance	Bearing	Course No.	Distance	Bearing
1	500.73'	S 0°03'55" E	20	661.85'	N 0°11'02" W
2	744.23'	S 26°15'54" W	21	745.82'	N 26°26'42" W
3	330.10'	N 89°57'15" W	22	667.52'	N 0°10'18" W
4	828.92'	S 0°02'25" E			
5	661.00'	S 0°02'25" E			
6	993.00'	S 89°58'55" E			
7	495.69'	N 0°04'40" W			
8	496.35'	S 89°58'40" E			
9	165.21'	N 0°05'48" W			
10	330.86'	S 89°58'35" E			
11	596.94'	S 56°22'12" E			
12	330.40'	S 0°07'40" E			
13	330.31'	N 0°11'25" W			
14	740.68'	N 63°29'33" W			
15	330.34'	N 0°09'54" W			
16	369.91'	N 26°43'03" W			
17	991.05'	N 0°09'32" W			
18	1107.49'	N 26°24'50" E			
19	165.14'	S 89°57'28" E			

13,583.54

Book No E-1011

Date: August, 1965

241



I, James E. Curry, a Registered Professional Engineer, do hereby certify that the above plat is a true and accurate survey of Sec. 32, TION, R 16E as made under my supervision.

LEGEND

- 5/8" Rods w/ Caps
- △ C. of E. Mon.
- Measured Line
- - - Calculated Line
- Orig. Cor. Stone

James E. Curry
 JAMES E. CURRY
 Reg. Prof. Eng'r. No 1872