

657

PARTIAL BOUNDARY SURVEYS

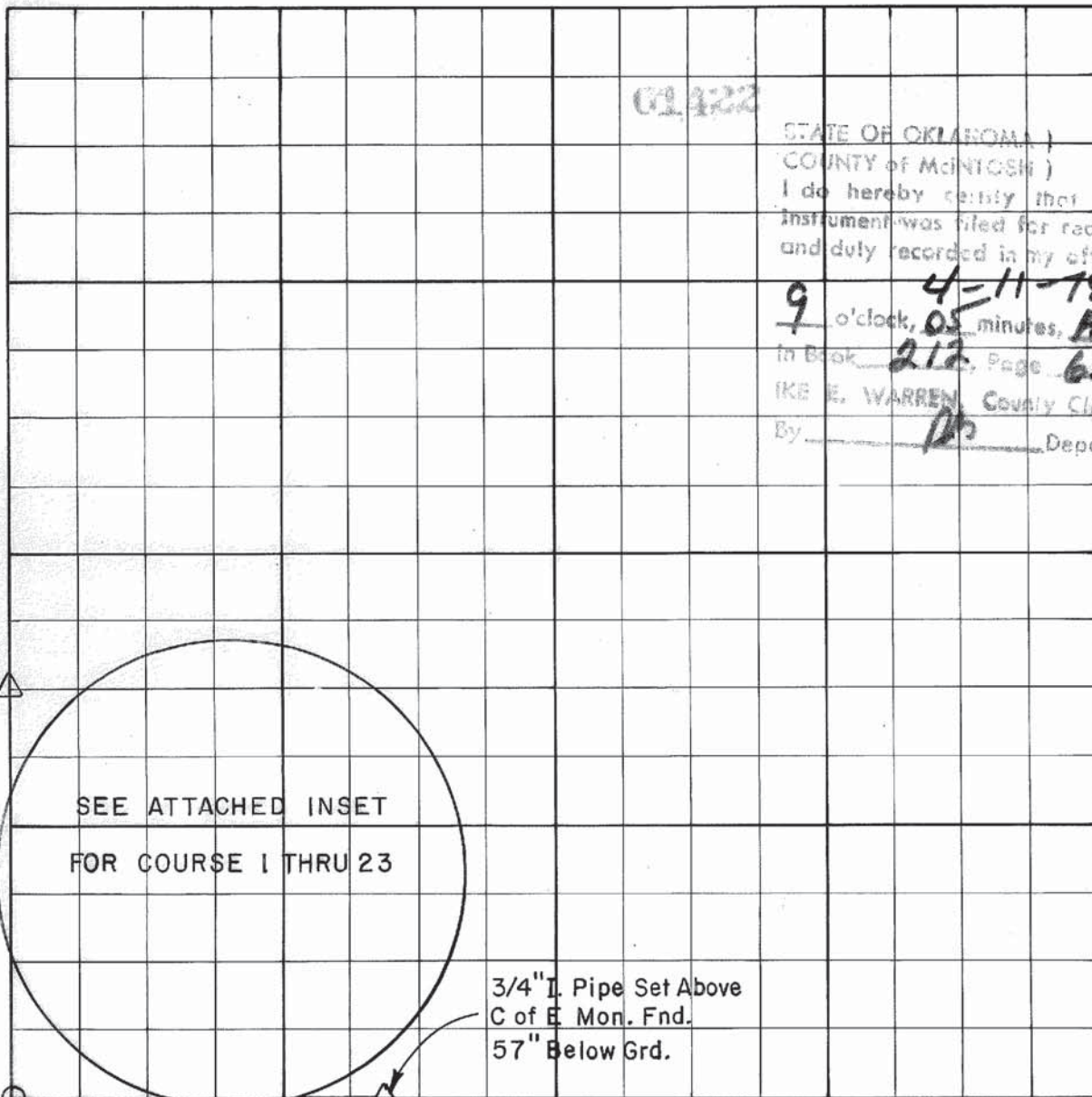
EUFAULA LAKE

CANADIAN RIVER, OKLAHOMA

Performed Under Contract Number DACW 56-77-C-0269

SEC. 36 , T - 10 - N , R - 16 - E COUNTY McINTOSH

IN LAKE IN LAKE IN LAKE



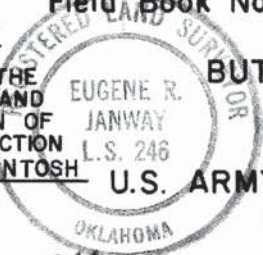
STATE OF OKLAHOMA)
 COUNTY of McIntosh) SS
 I do hereby certify that this
 instrument was filed for record
 and duly recorded in my office
 9 o'clock, 05 minutes, AM
 4-11-78
 in Book 212, Page 657
 IKE E. WARREN, County Clerk
 By: [Signature] Deputy

Course No.	Distance	Bearing	Course No.	Distance	Bearing
1	176.89'	N89° 49' 30" W	14	669.70'	N00° 23' 23" E
2	153.67'	N00° 23' 44" E	15	165.00'	S87° 29' 10" E
3	335.00'	N87° 28' 50" W	16	54.00'	N00° 23' 16" E
4	225.00'	N00° 23' 37" E	17	482.10'	N42° 45' 16" W
5	112.00'	N87° 28' 56" W	18	300.00'	S00° 23' 50" W
6	135.00'	N00° 23' 31" E	19	50.00'	S87° 28' 40" E
7	360.00'	N87° 29' 03" W	20	150.00'	N00° 23' 50" E
8	360.00'	N00° 23' 24" E	21	150.00'	S87° 28' 40" E
9	209.62'	S87° 29' 09" E	22	150.00'	N00° 23' 50" E
10	273.63'	N00° 23' 36" E	23	200.00'	N87° 28' 40" W
11	280.00'	N87° 28' 57" W			
12	273.70'	S00° 23' 29" W			
13	275.00'	N87° 29' 04" W			

Field Book No. E-1361 Date MARCH, 1978

CERTIFICATE OF SURVEY

I HEREBY CERTIFY THAT THE ABOVE PLAT IS A TRUE AND CORRECT REPRESENTATION OF THE SURVEY MADE IN SECTION 36, T 10 N, R 16 E, McINTOSH COUNTY, OKLAHOMA.



BUTLER ASSOCIATES, INC.

Under the Supervision of

U.S. ARMY ENGINEER DISTRICT, TULSA
 CORPS OF ENGINEERS

LEGEND

- △ MONUMENT
- ORIGINAL CORNER
- IRON PIN
- * COMPUTED DISTANCE

Eugene R. Janway
 REGISTERED LAND SURVEYOR

658

EUFAULA LAKE
CANADIAN RIVER, OKLAHOMA

INSET

A PORTION OF SEC. - 36, T 10 N, R 16 E McINTOSH COUNTY

Scale: 1" = 200'

1422

STATE OF OKLAHOMA)
COUNTY of McINTOSH) SS

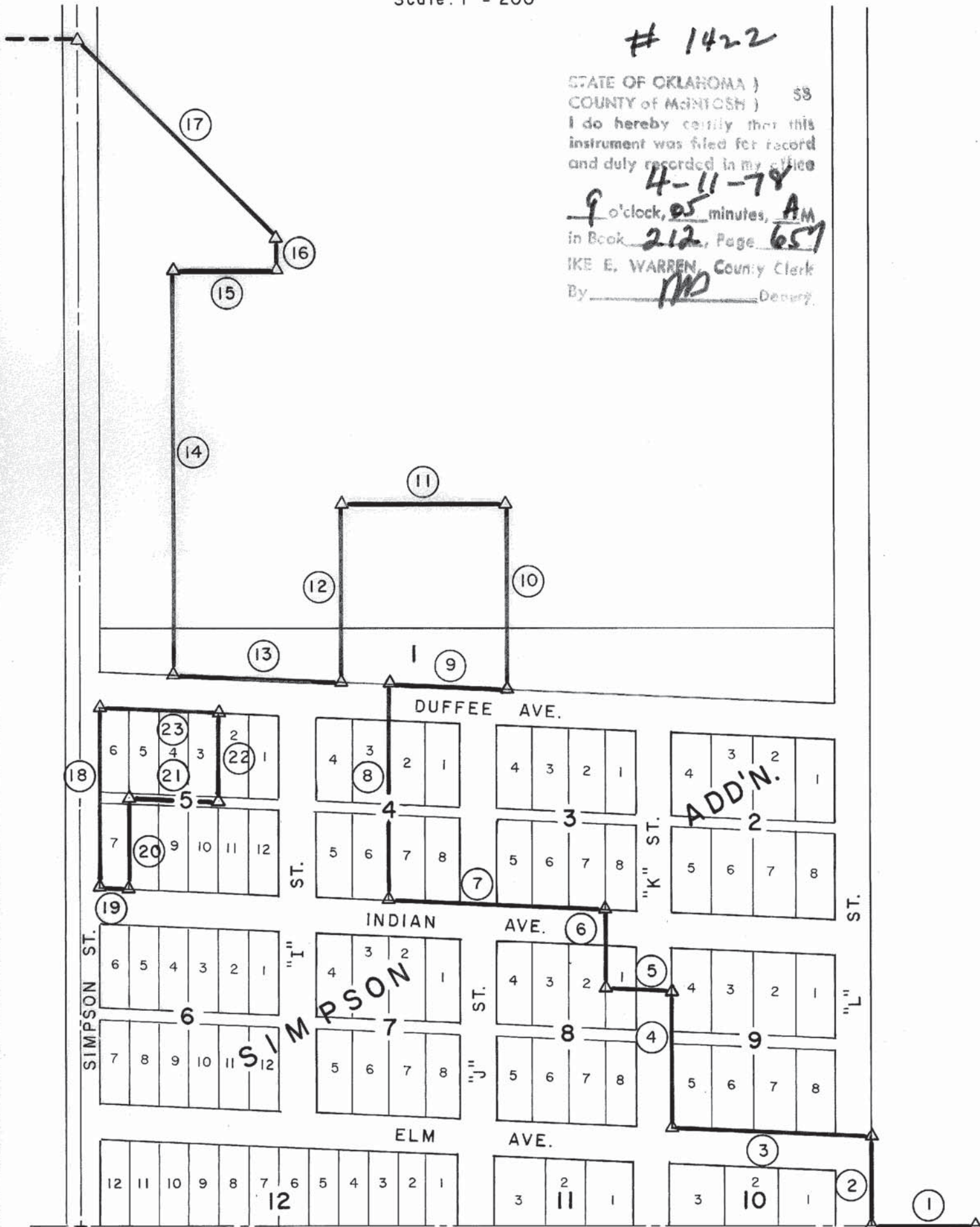
I do hereby certify that this
instrument was filed for record
and duly recorded in my office

4-11-78

9 o'clock, 05 minutes, AM
in Book 212, Page 657

IKE E. WARREN, County Clerk

By MD Deputy



BUTLER ASSOCIATES, INC.

Date: March, 1978
Field Book No. E-1361

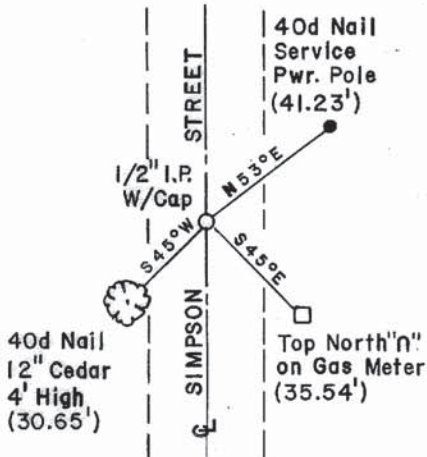
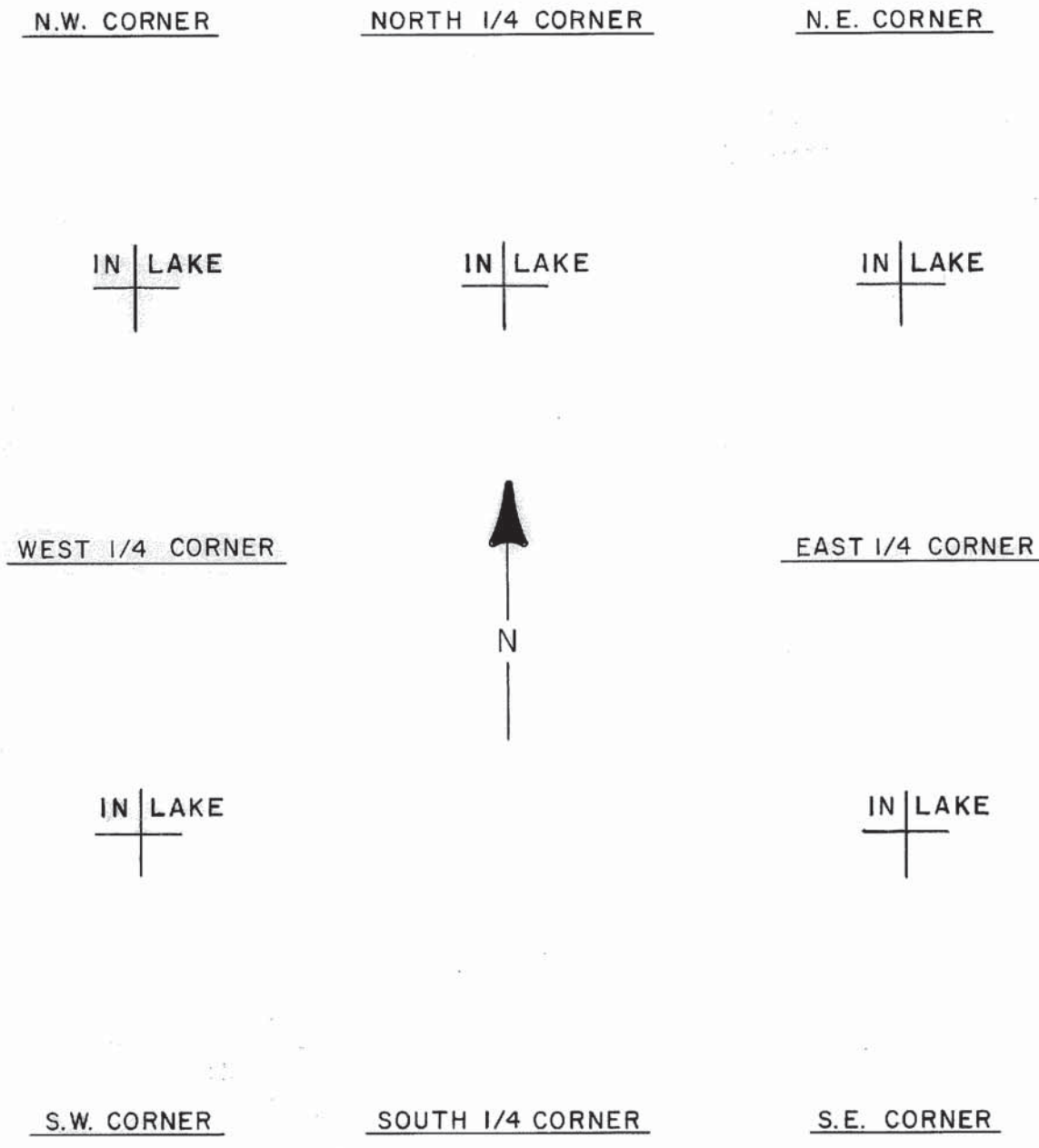
LEGEND

- △ Monument
- Original Corner
- Iron Pin

Eugene R. Janway
Registered Land Surveyor

#1022
 STATE OF OKLAHOMA
 COUNTY of MCINTOSH)
 I do hereby certify that this
 instrument was filed for record
 and duly recorded in my office
 at _____ o'clock, 05 minutes, AM
 in Book 212, Page 657
 IKE E. WARREN, County Clerk
 By DB Deputy

EUFAULA LAKE
 CANADIAN RIVER, OKLAHOMA
 SECTION AND QUARTER SECTION CORNER
 REFERENCES FOR
 SEC.-36, TION, R 16 E MCINTOSH COUNTY



BUTLER ASSOCIATES, INC.

Scale: 1" = 50'
 Date: MARCH, 1978
 Field Book No. E-1361



Eugene R. Jarway
 Registered Land Surveyor

- LEGEND
- △ Monument
 - Original Corner
 - Iron Pin