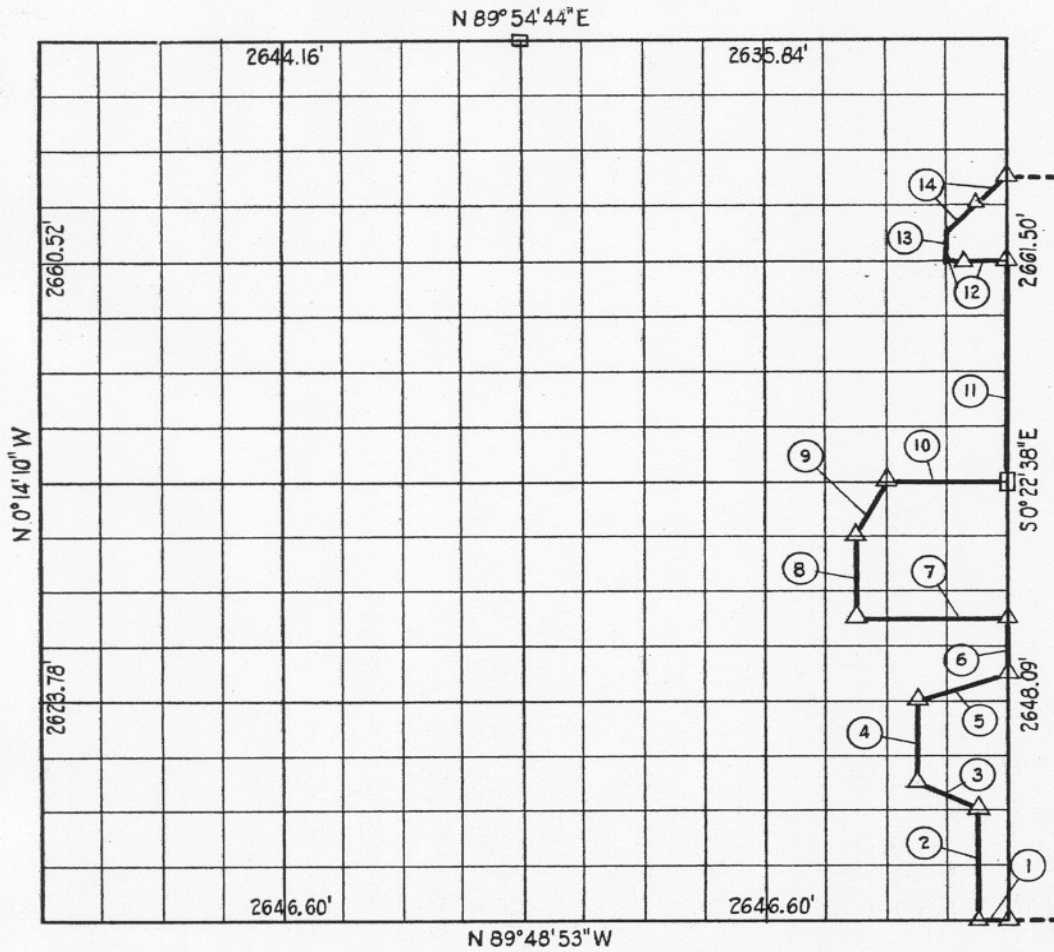


C. 3 - T 10 N - R 16 E. McINTOSH COUNTY



Course No.	Distance	Bearing	Course No.	Distance	Bearing
1	165.41	N 89° 48' 53" W	8	495.66	N 0° 20' 28" W
2	661.83	N 0° 22' 12" W	9	368.79	N 26° 14' 59" E
3	370.93	N 63° 24' 24" W	10	660.30	N 89° 55' 21" E
4	495.38	N 0° 21' 20" W	11	1318.55	N 0° 22' 38" W
5	521.45	N 71° 32' 54" E	12	329.70	S 89° 51' 02" W
6	331.01	N 0° 22' 38" W	13	164.80	N 0° 21' 46" W
7	825.90	N 89° 59' 43" W	14	465.39	N 44° 44' 35" E

Book No. E-1033 Date: July, 1965

167

I, Charles J. Finklea, A Registered Professional Engineer, do hereby certify that the above is a true and accurate survey of Sec. 3-T 10 N-R 16 E as made under my supervision.

Charles J. Finklea
 Charles J. Finklea
 Reg. Prof. Eng'r. No 1063