

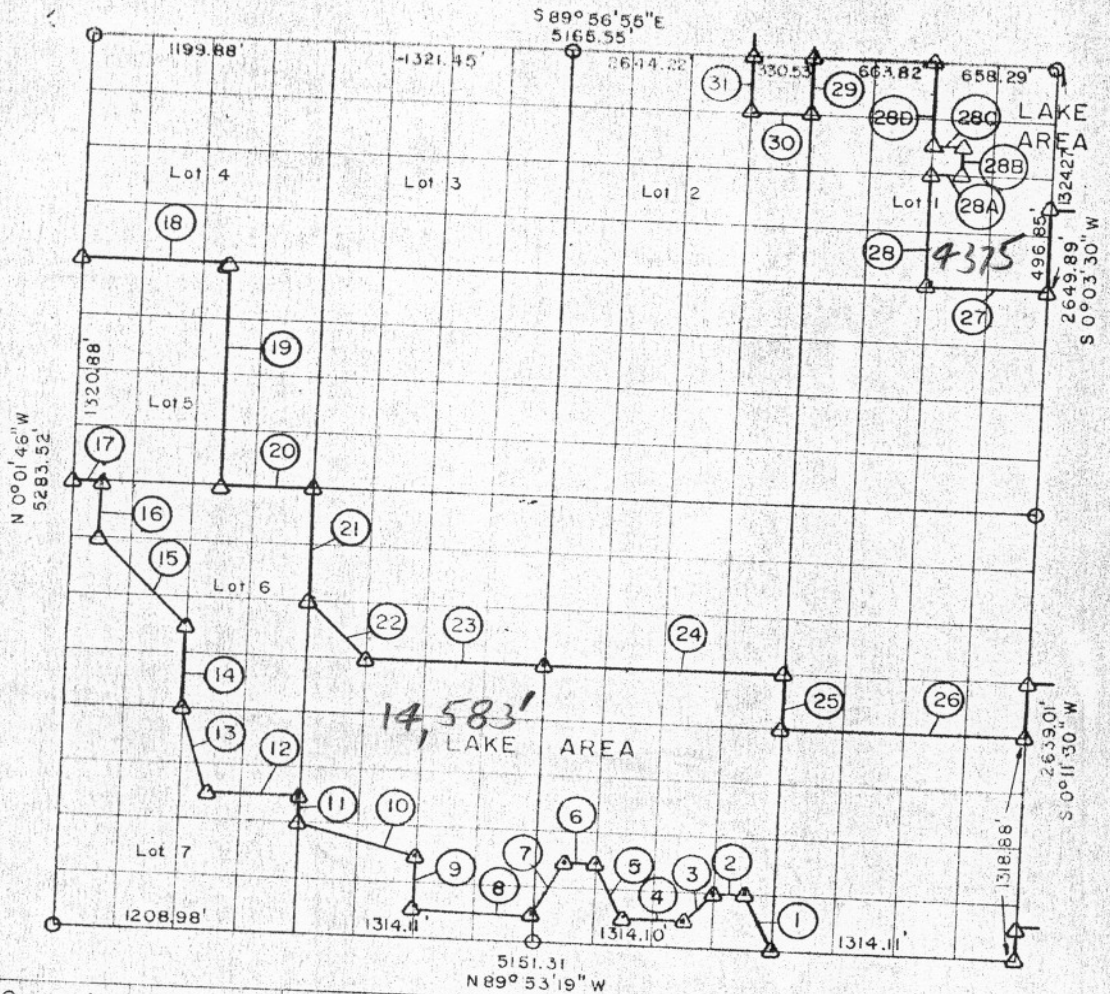
FILED
 BOOK 172
 DATE 2-5-74

Sheet of 2

FILED
 COUNTY
 PAGE 279
 DATE May 6, 1975

PARTIAL BOUNDARY SURVEYS
 EUFAULA LAKE
 CANADIAN RIVERS, OKLAHOMA

Performed Under Contract Number DACW 56-73-C-0218
 SEC. 6, T10 N, R16 E, I.M. McINTOSH COUNTY



Course No.	Distance	Bearing	Course No.	Distance	Bearing
1	368.71	N 26° 25' 39" W	14	495.30	N 0° 04' 44" W
2	164.32	N 89° 52' 59" W	15	671.73	N 42° 21' 17" W
3	232.61	S 44° 57' 14" W	16	330.21	N 0° 02' 31" W
4	328.59	N 89° 53' 09" W	17	150.55	N 89° 51' 30" W
5	368.95	N 26° 28' 11" W	18	751.35	S 89° 54' 39" E
6	164.36	N 89° 52' 49" W	19	1321.58	S 0° 05' 29" E
7	368.21	S 26° 27' 43" W	20	451.66	S 89° 51' 30" E
8	657.17	N 89° 53' 09" W	21	660.36	S 0° 07' 42" E
9	330.04	N 0° 05' 19" W	22	467.25	S 44° 54' 11" E
10	678.49	N 75° 48' 05" W	23	987.30	S 89° 51' 52" E
11	165.05	N 0° 07' 42" W	24	1316.60	S 89° 51' 52" E
12	452.84	N 89° 52' 29" W	25	330.08	S 0° 02' 17" W
13	518.25	N 17° 00' 44" W	26	1317.68	S 89° 51' 59" E

Field Book No. E-1192 Date January, 1974 Revised April, 1975

MCCOY, MECKLENBURG AND PARR, INC.

LEGEND
 MONUMENT
 ORIGINAL CORNER
 IRON PIN

Under the Supervision of
 U.S. ARMY ENGINEER DISTRICT, TULSA
 CORPS OF ENGINEERS

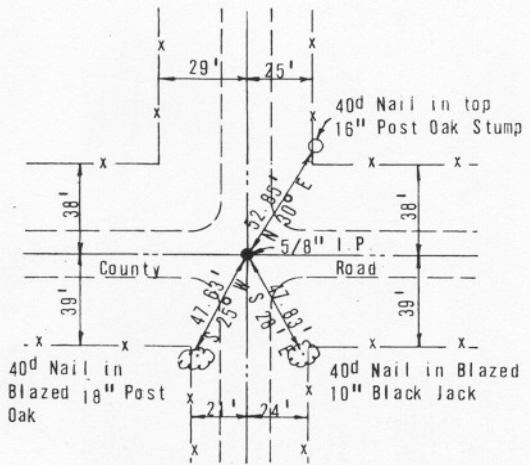
CERTIFICATE OF SURVEY

I HEREBY CERTIFY THAT THE ABOVE PLAT IS A TRUE AND CORRECT REPRESENTATION OF THE SURVEY MADE IN SECTION 6, T10 N, R16 E, McINTOSH COUNTY, OKLAHOMA.

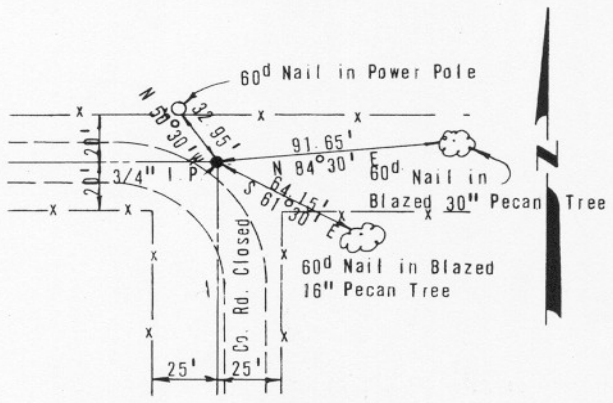
164

ROBERT L. MCCOY

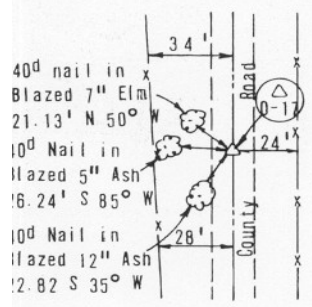
EUFAULA LAKE
 CANADIAN RIVERS, OKLAHOMA
SECTION AND QUARTER SECTION CORNER
REFERENCES FOR
SEC. 6, TION, R16 E, I.M. McINTOSH COUNTY



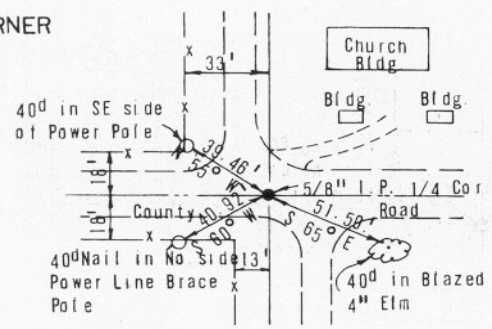
NORTHWEST CORNER



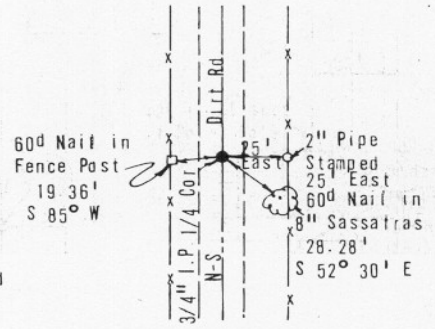
NORTHEAST CORNER



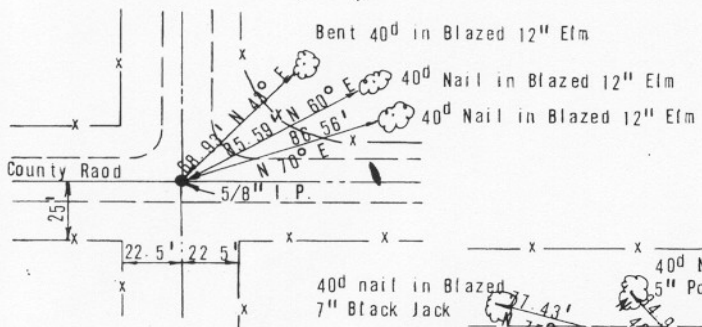
WEST QUARTER CORNER



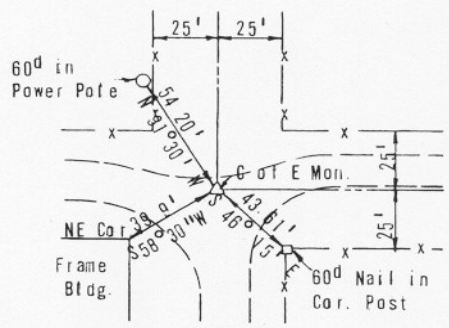
NORTH QUARTER CORNER



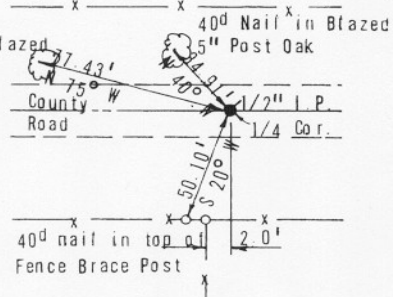
EAST QUARTER CORNER



SOUTHWEST CORNER



SOUTHEAST CORNER



SOUTH QUARTER CORNER

Scale:
 Date: Jan. 1974
 Field Book No. E-1192

- LEGEND**
- ◊ - Monument
 - - Original Corner
 - - Iron Pin

1104