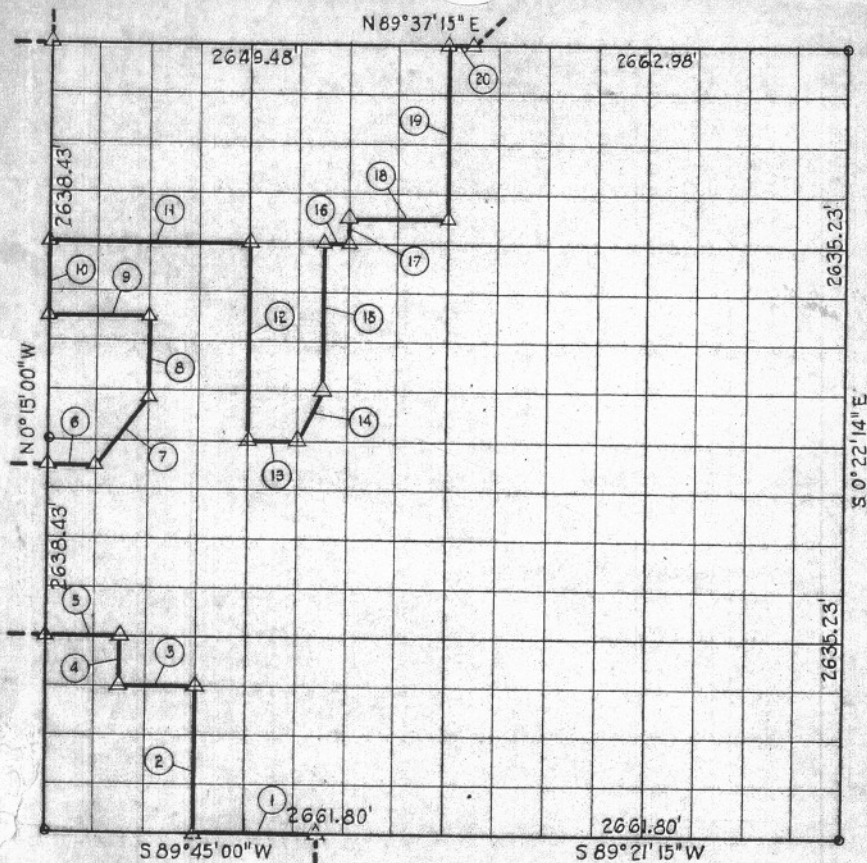


SEC. 8 - T10N - R 16 McINTOSH COUNTY



Course No.	Distance	Bearing	Course No.	Distance	Bearing
1	831.81	S 89° 45' 00" W	20	166.44	N 89° 37' 15" E
2	991.78	N 0° 18' 00" W			
3	498.43	S 89° 36' 52" W			
4	330.30	N 0° 16' 30" W			
5	498.51	S 89° 34' 09" W			
6	332.00	N 89° 35' 03" E			
7	547.53	N 37° 02' 35" E			
8	554.52	N 0° 17' 00" W			
9	663.43	S 89° 35' 50" W			
10	494.71	N 0° 15' 00" W			
11	1326.28	N 89° 36' 13" E			
12	1318.82	S 0° 19' 00" E			
13	331.96	N 89° 35' 11" E			
14	369.38	N 26° 22' 05" E			
15	988.32	N 0° 20' 30" W			
16	165.78	N 89° 36' 13" E			
17	164.83	N 0° 21' 00" W			
18	663.04	N 89° 36' 21" E			
19	1153.62	N 0° 23' 01" W			

12,391.41

Book No. E-1035 Date: July, 1965

181

I, Charles J. Finklea, A Registered Professional Engineer, do hereby certify that the above is a true and accurate survey of Sec 8-T 10 N-R 16 E and made under my supervision.

Charles J. Finklea

Charles J. Finklea
Reg. Prof. Eng'r. No. 1063