

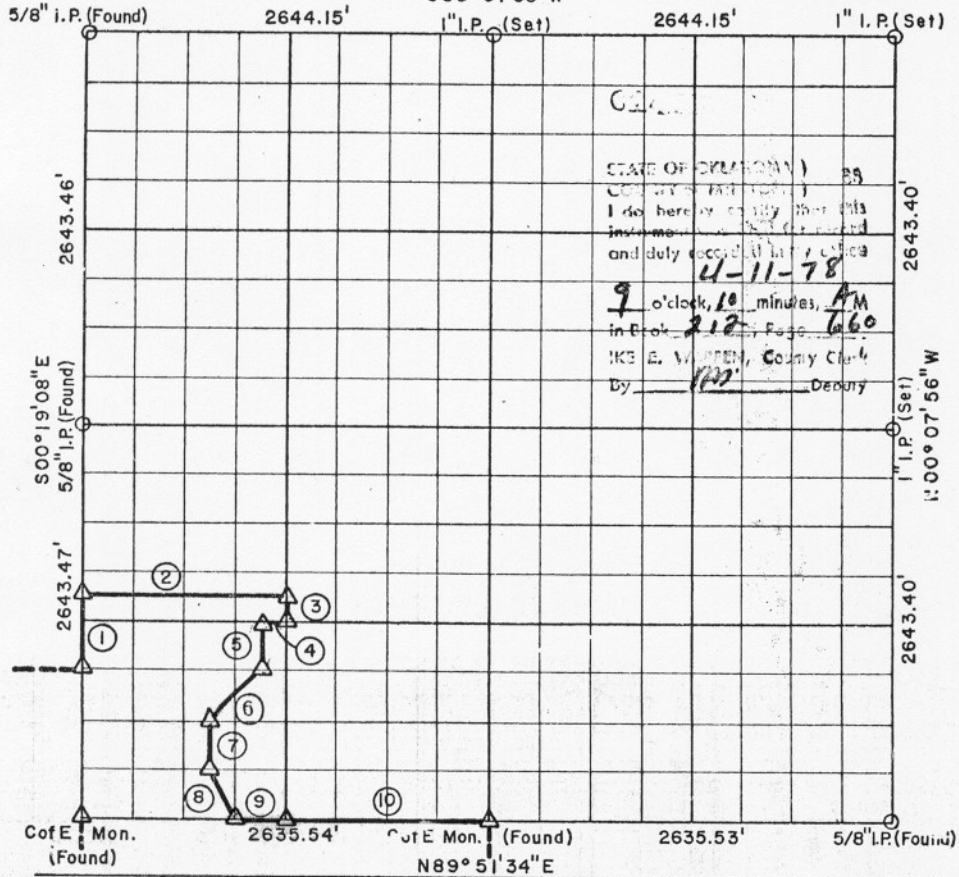
PARTIAL BOUNDARY SURVEYS

EUFAULA LAKE  
CANADIAN RIVER, OKLAHOMA

Performed Under Contract Number DACW 56-77-C-0269

SEC. 15 , T-10 - N , R - 17 - E COUNTY McINTOSH

S89°51'38"W



STATE OF OKLAHOMA )  
County of McIntosh )  
I do hereby certify that this  
instrument was recorded  
and duly recorded in my office  
on 4-11-78  
at 9 o'clock, 10 minutes, AM  
in Book 212, Page 660  
I, KE E. WILSON, County Clerk  
By [Signature] Deputy

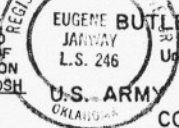
Course No.	Distance	Bearing	Course No.	Distance	Bearing
1	495.65'	N00°19'08" E			
2	1318.98'	N89°51'36" E			
3	165.22'	S00°16'20" E			
4	164.86'	S89°51'35" W			
5	330.43'	S00°16'41" E			
6	466.14'	S44°42'59" W			
7	330.43'	S00°17'23" E			
8	369.60'	S26°45'21" E			
9	329.44'	N89°51'34" E			
10	1317.77'	N89°51'34" E			

CERTIFICATE OF SURVEY

Field Book No. E-1362 Date MARCH, 1978

I HEREBY CERTIFY THAT THE ABOVE PLAT IS A TRUE AND CORRECT REPRESENTATION OF THE SURVEY MADE IN SECTION 15, T.10N, R.17E, MCINTOSH COUNTY, OKLAHOMA.

Eugene R. Janway  
REGISTERED LAND SURVEYOR



EUGENE BUTLER ASSOCIATES, INC.  
JANWAY  
L.S. 246  
Under the Supervision of  
U.S. ARMY ENGINEER DISTRICT, TULSA  
CORPS OF ENGINEERS

SHEET 1 of 2

LEGEND

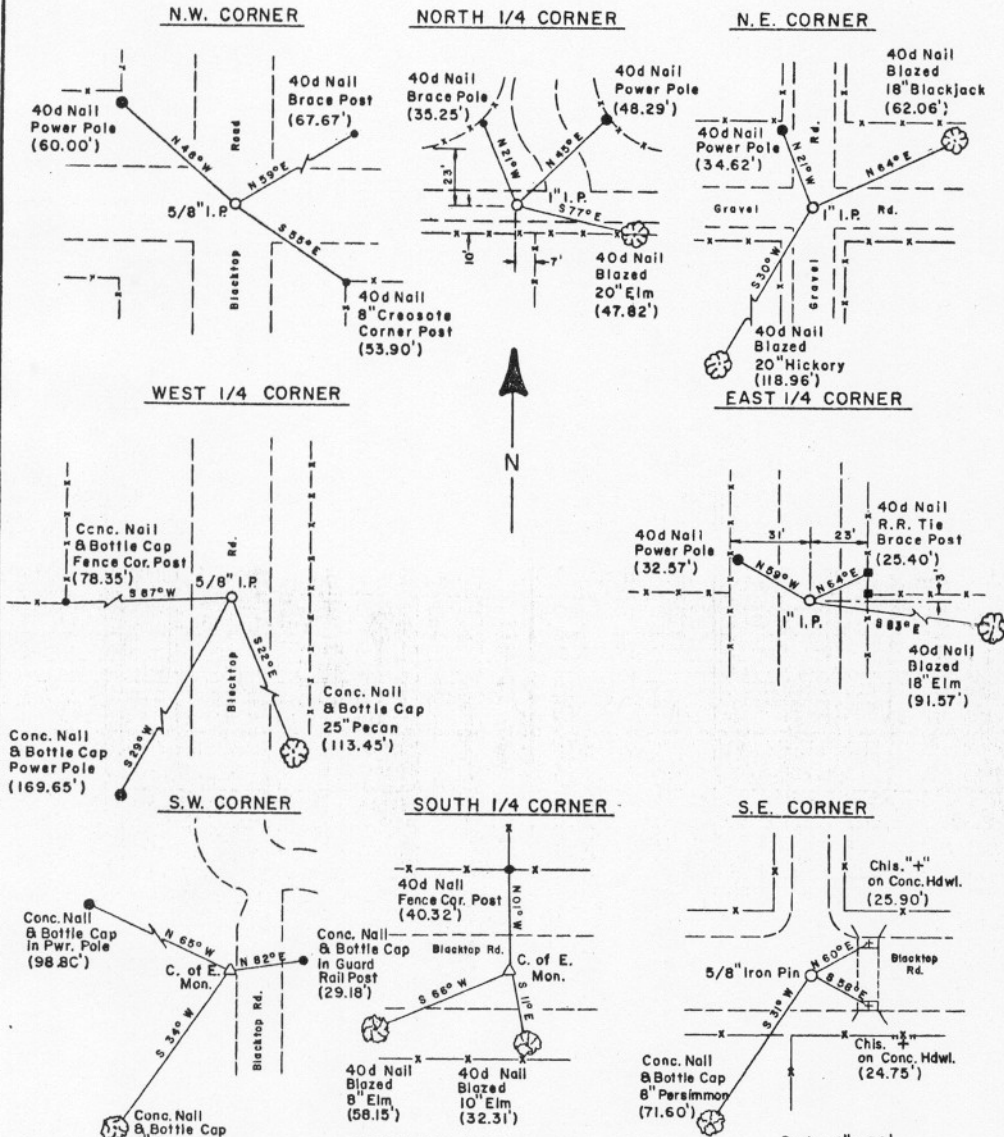
- ▲ MONUMENT
- ORIGINAL CORNER
- IRON PIN
- \* COMPUTED DISTANCE

EUFALAKE  
CANADIAN RIVER, OKLAHOMA

SECTION AND QUARTER SECTION CORNER  
REFERENCES FOR

SEC.-15, TION, R17E McINTOSH COUNTY

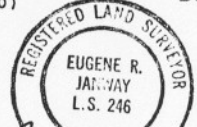
OKLAHOMA  
COUNTY OF McINTOSH ) SS  
I do hereby certify that this  
instrument was filed for record  
and duly recorded in my office  
4-11-78  
9 o'clock, 10 minutes, A.M.  
Book 212, Page 660  
W. E. WARREN, County Clerk  
By DM Deputy



BUTLER ASSOCIATES, INC.

Scale: 1" = 50'  
Date: March, 1978  
Field Book No. E-1362

- LEGEND
- △ Monument
  - Original Corner
  - Iron Pin



*Eugene R. Janway*  
Registered Land Surveyor