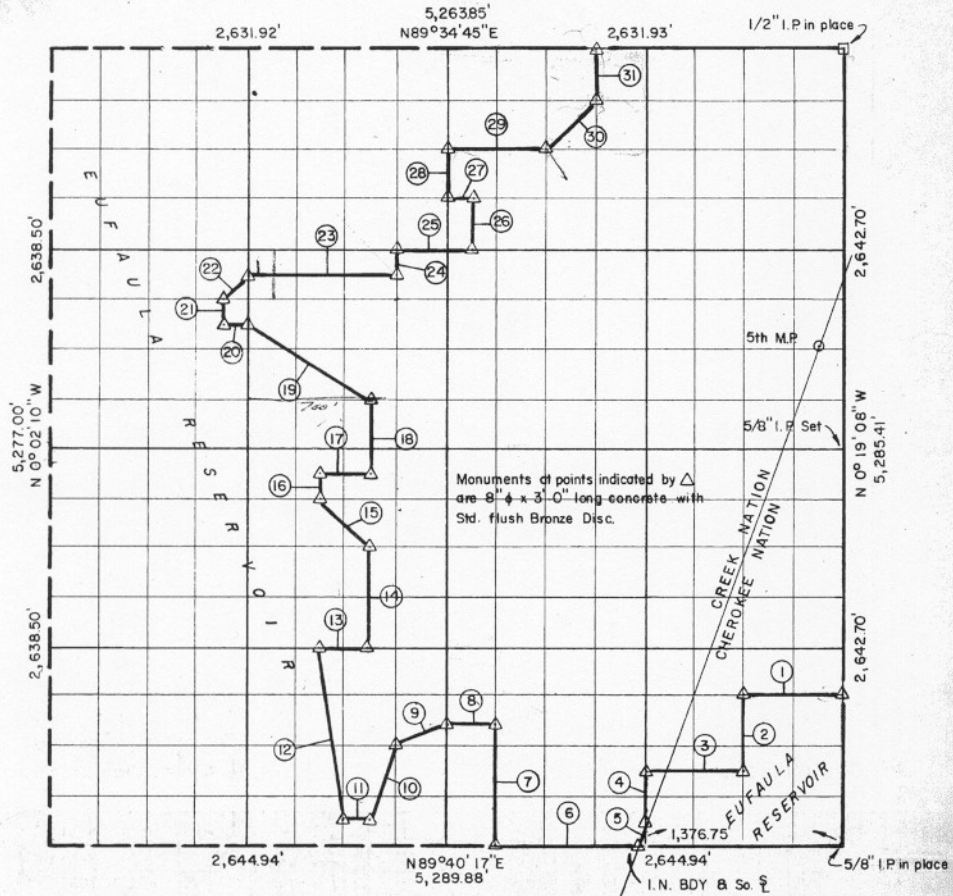


SEC. 16 - T10 N-R17 E, CANTOSH COUNTY, OKLAHOMA



Course No.	Distance	Bearing	Course No.	Distance	Bearing
1	660.63'	S 89° 39' 15" W	21	164.97'	N 0° 05' 54" W
2	495.42'	S 0° 17' 01" E	22	233.74'	N 44° 42' 38" E
3	660.95'	S 89° 39' 47" W	23	988.35'	N 89° 36' 18" E
4	347.67'	S 0° 14' 54" E	24	165.02'	N 0° 09' 36" W
5	157.40'	S 19° 55' 29" W	25	494.10'	N 89° 36' 08" E
6	937.58'	S 89° 40' 17" W	26	330.09'	N 0° 11' 12" W
7	825.28'	N 0° 11' 43" W	27	164.65'	S 89° 35' 48" W
8	330.38'	S 89° 39' 26" W	28	330.08'	N 0° 10' 39" W
9	369.77'	S 63° 09' 05" W	29	658.39'	N 89° 35' 27" E
10	522.40'	S 18° 17' 06" W	30	466.98'	N 44° 35' 41" E
11	165.28'	S 89° 40' 07" W	31	330.18'	N 0° 13' 50" W
12	1,166.17'	N 8° 16' 49" W			
13	330.21'	N 89° 38' 54" E			
14	660.05'	N 0° 09' 04" W			
15	465.76'	N 45° 14' 56" W			
16	165.00'	N 0° 08' 00" W			
17	329.86'	N 89° 37' 42" E			
18	495.04'	N 0° 09' 04" W			
19	959.40'	N 59° 19' 28" W			
20	164.78'	S 89° 36' 40" W			

Book No. E-1060 Date: June 1965

CRAIG AND KEITHLINE
Consulting Engineers

I, Charles R. Keithline, a Registered Professional Engineer in the State of Oklahoma, do hereby certify that the above plat is a true and accurate survey of Sec. 16 - T10 N-R17 E, as made under my supervision.

Charles R. Keithline
CHARLES R. KEITHLINE
Reg. Prof. Engr. No. 2834 (Okla.)

14,535.58