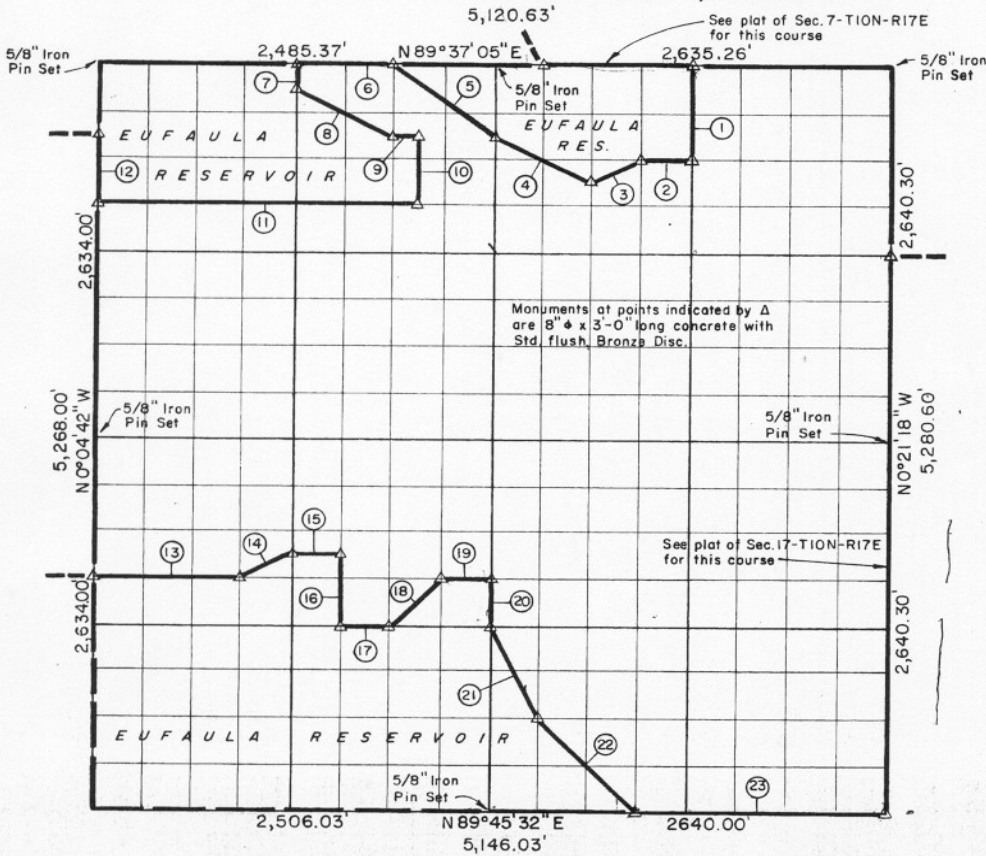


SEC. 18 - TION-R17 E McINTOSH COUNTY, OKLAHOMA



Course No.	Distance	Bearing	Course No.	Distance	Bearing
1	659.67'	S 0°19'45" E	21	737.44'	S26°52'46" E
2	329.48'	S89°38'08" W	22	933.51'	S45°18'14" E
3	368.55'	S63°03'44" W	23	1,650.00'	N89°45'32" E
4	736.55'	N63°46'24" W			
5	823.19'	N53°27'56" W			
6	658.82'	S89°37'05" W			
7	164.72'	S 0°16'40" E			
8	736.20'	S63°47'19" E			
9	164.72'	N89°37'52" E			
10	494.34'	S 0°17'38" E			
11	1,994.94'	S89°38'40" W			
12	493.87'	N 0°04'42" W			
13	850.31'	N89°42'53" E			
14	368.83'	N63°11'33" E			
15	329.80'	N89°42'38" E			
16	494.22'	S 0°17'03" E			
17	329.85'	N89°43'25" E		14,444.67	
18	466.21'	N44°44'12" E			
19	329.82'	N89°42'53" E			
20	329.63'	S 0°18'12" E			

Book No. E-982 Date: November 1964

200

I, Charles R. Keithline, a Registered Professional Engineer in the State of Oklahoma, do hereby certify that the above plat is a true and accurate survey of Sec. 18-TION-R17 E, as made under my supervision.

*Charles R. Keithline*  
 CHARLES R. KEITHLINE  
 Reg. Prof. Engr. No. 2834 (Okla.)