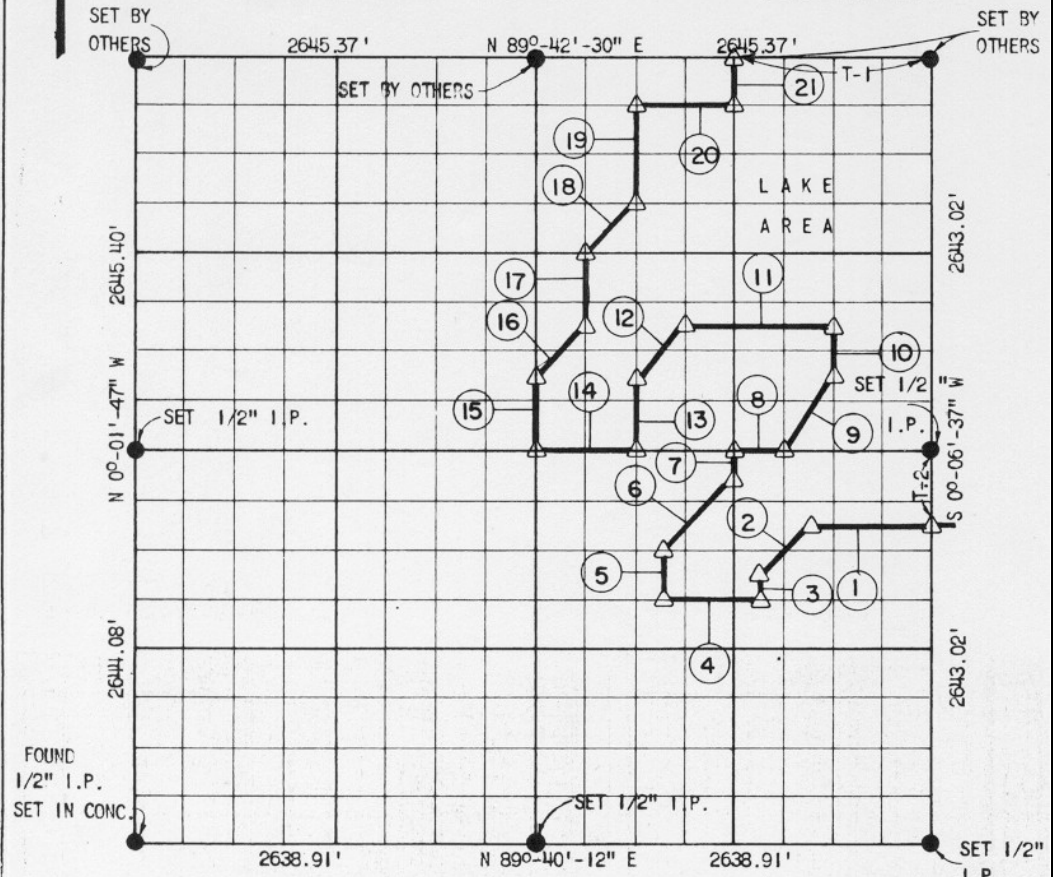


LEGEND  
 MONUMENT SET  
 ORIGINAL CORNER FOUND  
 IRON PIN

PARTIAL BOUNDARY SURVEYS  
 EUFAULA LAKE, AREA "K"  
 CANADIAN RIVER, OKLAHOMA.

Performed Under Contract Number DACW 56-72-C-0017

SEC 1 T 10 N R 17 E COUNTY McINTOSH



FOUND  
 1/2" I.P.  
 SET IN CONC.

Course No.	Distance	Bearing	Course No.	Distance	Bearing
①	825.45'	S 89°-40'-47" W	⑬	495.73'	S 0°-03'-35" W
②	468.73'	S 44°-51'-39" W	⑭	660.50'	S 89°-40'-55" W
③	165.20'	S 0°-04'-51" W	⑮	495.79'	N 0°-02'-34" E
④	660.21'	S 89°-40'-39" W	⑯	468.76'	N 44°-51'-13" E
⑤	330.42'	N 0°-03'-50" E	⑰	495.76'	N 0°-03'-05" E
⑥	703.06'	N 44°-51'-21" E	⑱	468.83'	N 44°-52'-26" E
⑦	165.20'	N 0°-04'-36" E	⑲	660.97'	N 0°-03'-35" E
⑧	330.25'	N 89°-40'-55" E	⑳	661.18'	N 89°-42'-18" E
⑨	597.54'	N 33°-38'-38" E	㉑	330.45'	N 0°-04'-36" E
⑩	330.41'	N 0°-05'-37" E	T-1	1322.69'	N 89°-42'-30" E
⑪	991.12'	S 89°-41'-25" W	T-2	495.57'	S 0°-06'-37" W
⑫	468.80'	S 44°-51'-54" W			

CERTIFICATE OF SURVEY Field Book No. F-1170 Date DEC. 1971  
 SURVEYED BY

I HEREBY CERTIFY THAT THE ABOVE PLAT IS A TRUE AND CORRECT REPRESENTATION OF THE SURVEY MADE IN SECTION 1 T-10-N, R-17-E MCINTOSH COUNTY OKLAHOMA

**WHEELER & ASSOCIATES, ENGINEERS-SURVEYORS**  
 Under the Supervision of

*W. W. Wheeler*  
 REGISTERED LAND SURVEYOR

U.S. ARMY ENGINEER DISTRICT, TULSA  
 CORPS OF ENGINEERS  
 SHEET 4 OF 8



172

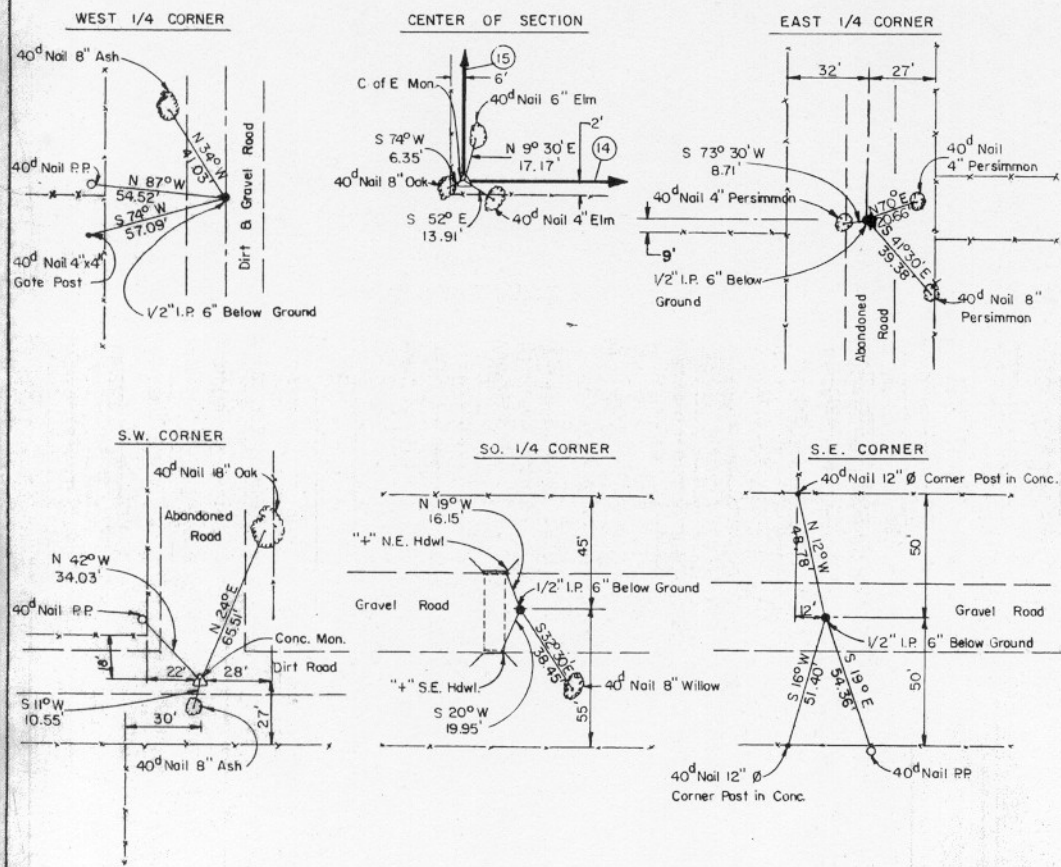
# EUFAULA LAKE

CANADIAN RIVER, OKLAHOMA

SECTION AND QUARTER SECTION CORNER  
REFERENCES FOR

SEC. 1 TION, R 17 E

COUNTY MCINTOSH



Scale: 1" = 50'  
Date Dec. 1971  
Field book Nos. E-1170  
E-1173

SURVEYED BY  
**WHEELER & ASSOCIATES, ENGINEERS-SURVEYORS**  
TULSA, OKLAHOMA

**LEGEND**  
 △ Monument Set  
 □ Original Corner Found  
 • Iron Pin

172