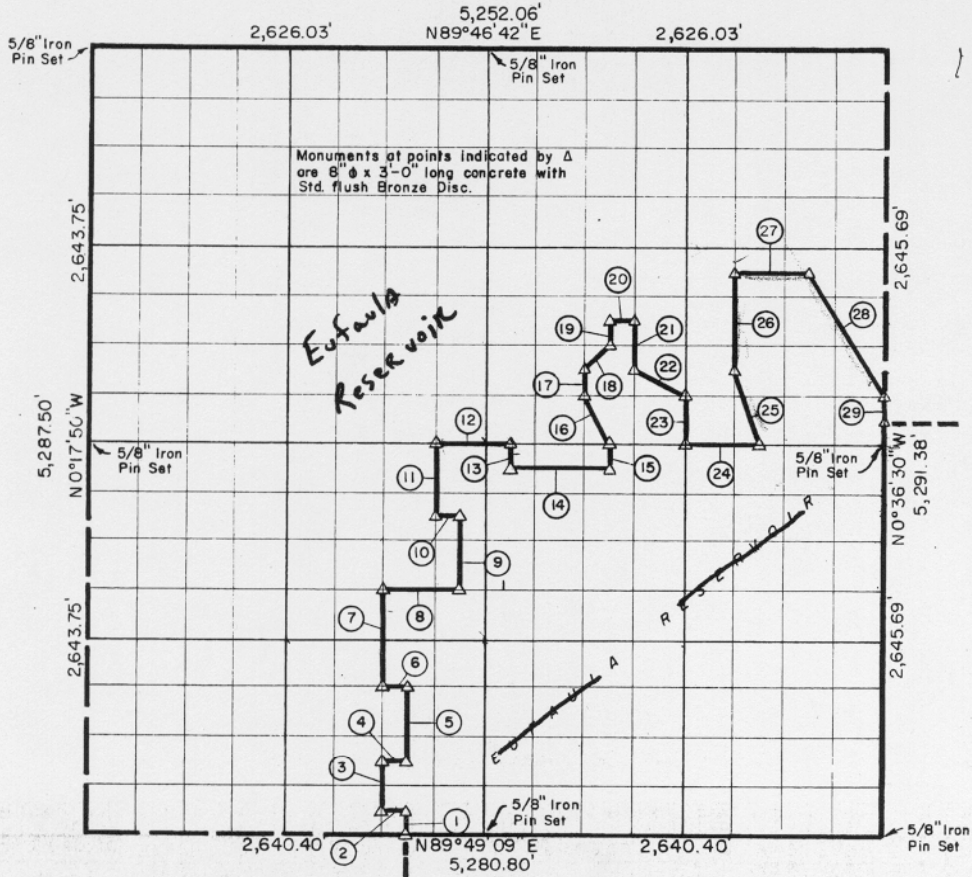


Sec. 20-TION-R17E, OSB COUNTY, OKLAHOMA



Eufaula Reservoir

Course No.	Distance	Bearing	Course No.	Distance	Bearing
1	165.29'	N 0° 25' 25\"W	21	330.67'	S 0° 30' 40\"E
2	165.00'	S 89° 49' 05\"W	22	369.02'	S 63° 35' 23\"E
3	330.57'	N 0° 24' 50\"W	23	330.65'	S 0° 31' 50\"E
4	164.94'	N 89° 48' 55\"E	24	493.73'	N 89° 47' 56\"E
5	495.87'	N 0° 25' 25\"W	25	523.53'	N 18° 52' 19\"W
6	164.86'	S 89° 48' 41\"W	26	661.33'	N 0° 33' 00\"W
7	661.14'	N 0° 24' 50\"W	27	493.14'	N 89° 47' 24\"E
8	494.23'	N 89° 48' 23\"E	28	965.61'	S 31° 19' 07\"E
9	495.88'	N 0° 26' 35\"W	29	165.35'	S 0° 36' 30\"E
10	164.66'	S 89° 48' 10\"W			
11	495.87'	N 0° 26' 00\"W			
12	493.73'	N 89° 47' 56\"E			
13	165.30'	S 0° 27' 45\"E			
14	658.42'	N 89° 48' 00\"E			
15	165.32'	N 0° 30' 05\"W			
16	370.07'	N 26° 53' 53\"W			
17	165.31'	N 0° 29' 30\"W			
18	232.60'	N 44° 30' 13\"E			
19	165.32'	N 0° 30' 05\"W			
20	164.43'	N 89° 47' 33\"E			

10,711.81

Book No. E-988 Date: December 1964

I, Charles R. Keithline, a Registered Professional Engineer in the State of Oklahoma, do hereby certify that the above plat is a true and accurate survey of Sec. 20-TION-R17E as made under my supervision.

Charles R. Keithline
 CHARLES R. KEITHLINE
 Reg. Prof. Engr. No. 2834 (Okla.)

216