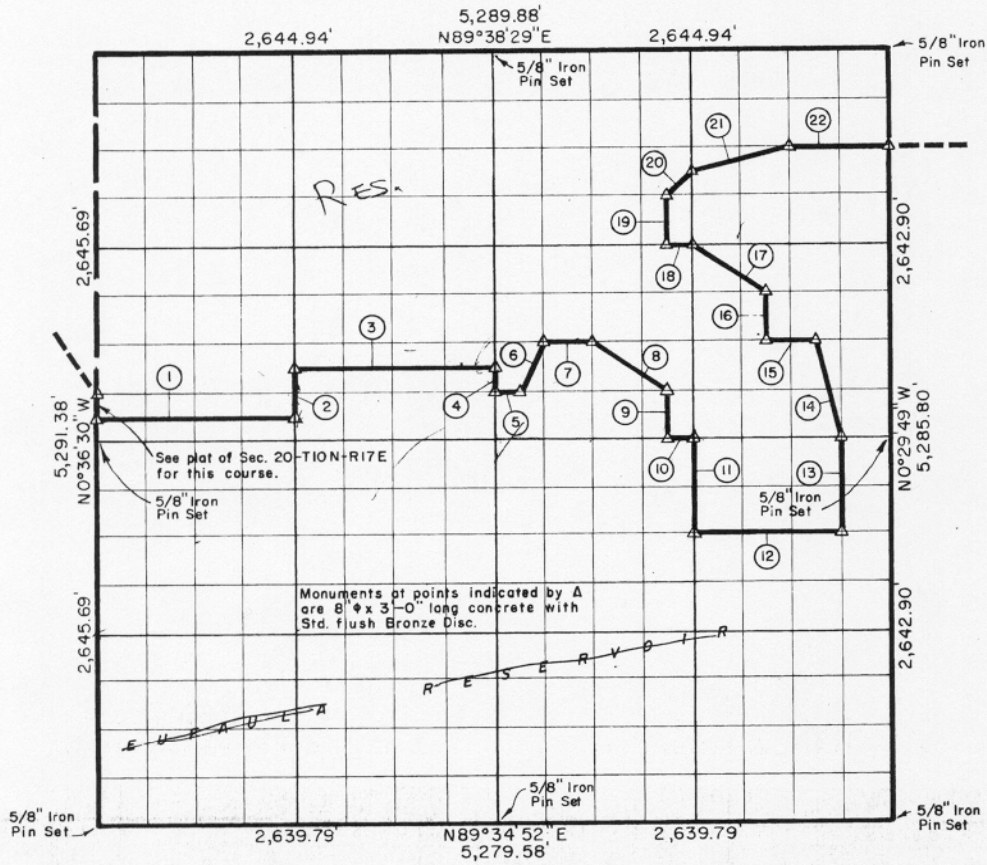


SEC. 21-TION-R17E Mc. JOSH COUNTY, OKLAH.



Course No.	Distance	Bearing	Course No.	Distance	Bearing
1	1,321.26'	N89°36'47\" E	21	680.96'	N75°35'35\" E
2	330.62'	N 0°34'50\" W	22	661.07'	N89°38'02\" E
3	1,321.42'	N 89°37'01\" E			
4	165.27'	S 0°33'09\" E			
5	165.17'	N89°36'54\" E			
6	369.07'	N 26°02'22\" E			
7	330.38'	N89°37'07\" E			
8	596.35'	S 56°43'49\" E			
9	330.46'	S 0°31'42\" E			
10	165.15'	N89°36'40\" E			
11	660.90'	S 0°31'29\" E			
12	990.64'	N 89°36'13\" E			
13	660.77'	N 0°30'41\" W			
14	681.44'	N 14°31'59\" W			
15	330.38'	S 89°37'07\" W			
16	330.41'	N 0°30'51\" W			
17	596.33'	N 56°43'30\" W			
18	165.22'	S 89°37'34\" W			
19	330.46'	N 0°31'42\" W			
20	233.37'	N 44°33'33\" E			
			11,417.10		

Book No. E-989 Date: December 1964

I, Charles R. Keithline, a Registered Professional Engineer in the State of Oklahoma, do hereby certify that the above plat is a true and accurate survey of Sec. 21-TION-R17E as made under my supervision.

217

Charles R. Keithline
 CHARLES R. KEITHLINE
 Reg. Prof. Engr. No. 2834 (Okla.)