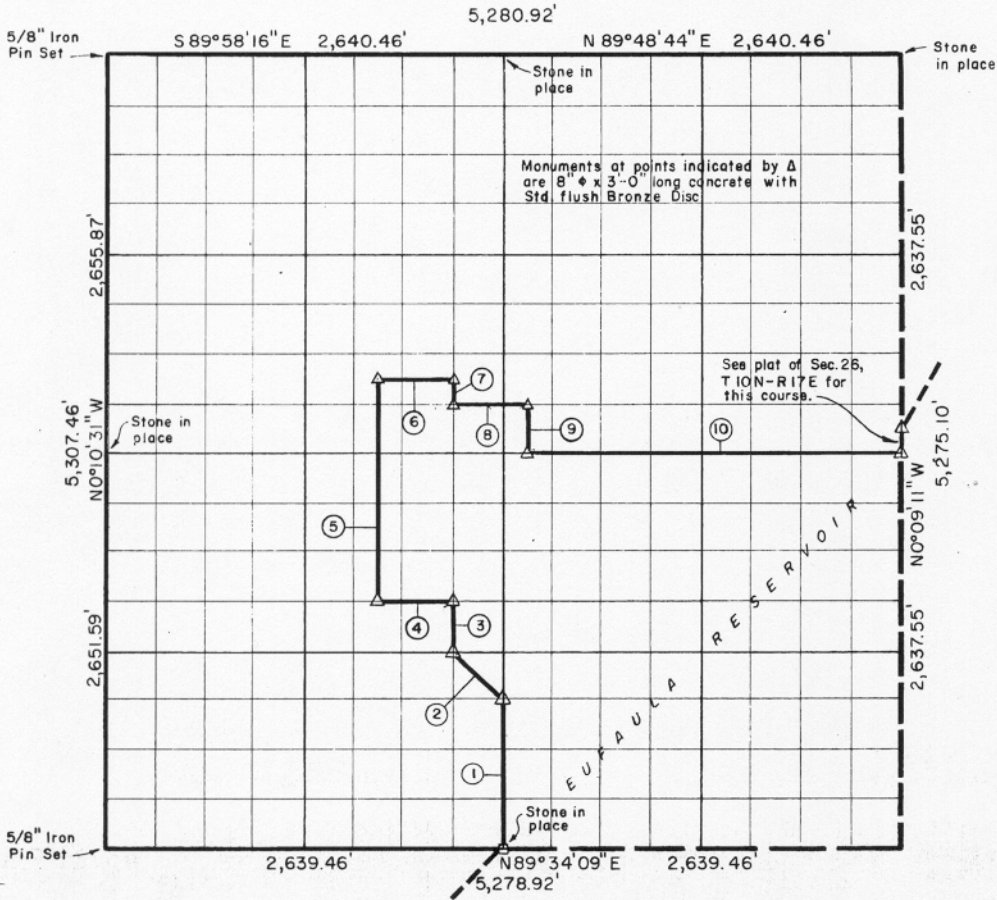


Sec. 27-TION-R17E in JOSH COUNTY, OKLAHO



Course No.	Distance	Bearing	Course No.	Distance	Bearing
1	991.71'	N 0° 09' 51" W			
2	466.29'	N 45° 12' 21" W			
3	330.80'	N 0° 09' 56" W			
4	494.95'	S 89° 39' 52" W			
5	1,488.79'	N 0° 10' 02" W			
6	495.00'	N 89° 44' 19" E			
7	165.40'	S 0° 09' 56" E			
8	495.00'	N 89° 45' 21" E			
9	330.52'	S 0° 09' 49" E			
10	2,474.95'	N 89° 43' 18" E			

7733.41

Book No. E-987 Date: December 1964

234

I, Charles R. Keithline, a Registered Professional Engineer in the State of Oklahoma, do hereby certify that the above plat is a true and accurate survey of Sec. 27-TION-R17E as made under my supervision.

*Charles R. Keithline*  
 CHARLES R. KEITHLINE  
 Reg. Prof. Engr. No. 2834 (Okla.)