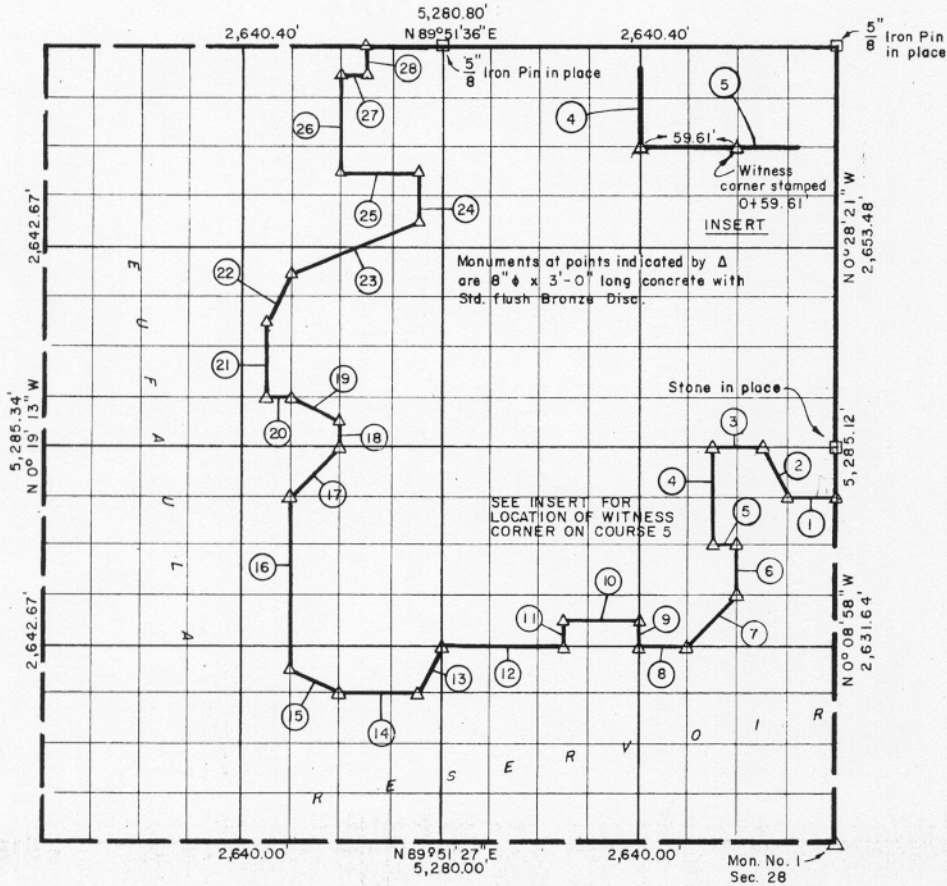


29 TION R17E SH COUNTY, OKLAH.



Course No.	Distance	Bearing	Course No.	Distance	Bearing
1	330.84'	S 89° 57' 43" W	21	496.07'	N 0° 19' 04" W
2	368.68'	N 26° 50' 17" W	22	368.96'	N 26° 15' 02" E
3	330.96'	S 89° 58' 37" W	23	887.70'	N 68° 02' 10" E
4	658.34'	S 0° 12' 06" E	24	330.97'	N 0° 18' 58" W
5	165.36'	N 89° 56' 49" E	25	495.07'	S 89° 53' 47" W
6	329.13'	S 0° 11' 28" E	26	661.67'	N 0° 19' 01" W
7	465.98'	S 44° 58' 48" W	27	165.03'	N 89° 52' 02" E
8	330.48'	S 89° 52' 02" W	28	165.44'	N 0° 19' 00" W
9	164.65'	N 0° 13' 58" W			
10	495.81'	S 89° 55' 29" W			
11	164.72'	S 0° 15' 51" E			
12	826.20'	S 89° 55' 02" W			
13	368.08'	S 26° 19' 05" W			
14	495.01'	S 89° 54' 08" W			
15	369.50'	N 63° 35' 00" W			
16	1,154.68'	N 0° 19' 03" W			
17	465.44'	N 44° 50' 33" E			
18	165.42'	N 0° 19' 01" W			
19	369.89'	N 63° 28' 23" W			
20	165.02'	S 89° 57' 44" W			

Book No. E-1062 Date: May 1965

I, Charles R. Keithline, a Registered Professional Engineer in the State of Oklahoma, do hereby certify that the above plat is a true and accurate survey of Sec. 29 - TION - R17E, as made under my supervision.

CRAIG AND KEITHLINE
Consulting Engineers

Charles R. Keithline
CHARLES R. KEITHLINE
Reg. Prof. Engr. No. 2834 (Okla.)

11,755.10 ✓

232

