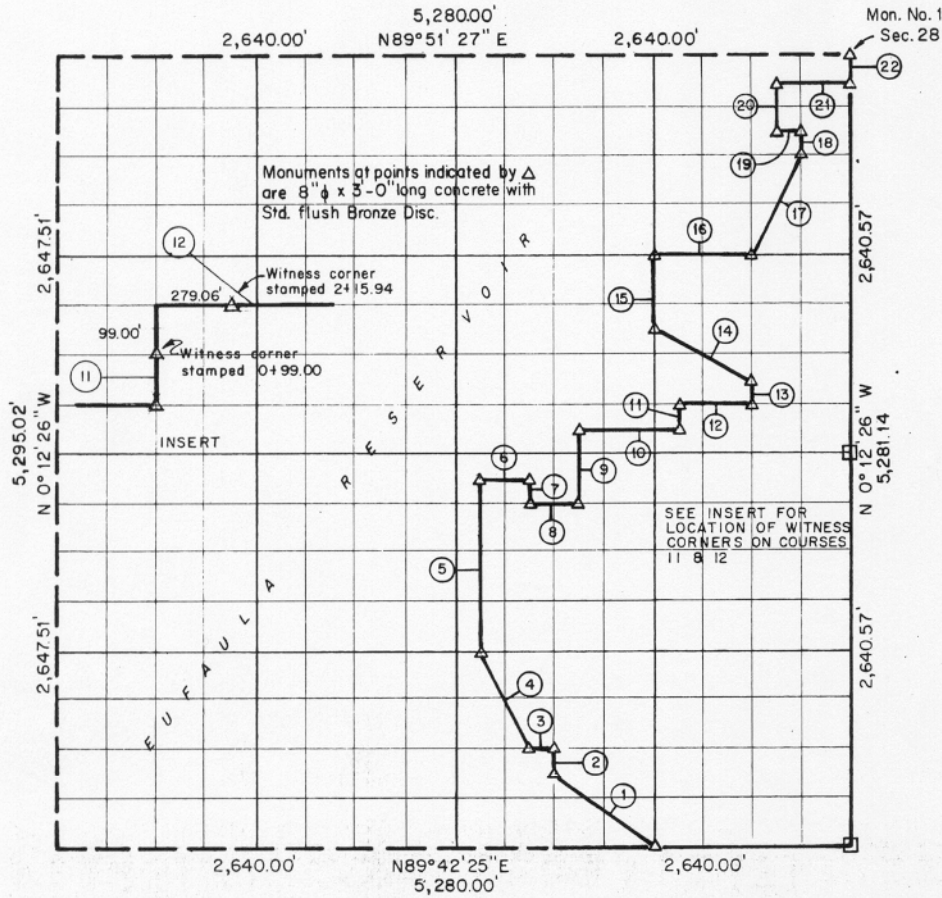


SEC. 32 TION R17E TOSH COUNTY, OKLA.



Course No.	Distance	Bearing	Course No.	Distance	Bearing
1	824.76'	N 53° 21' 32" W	21	495.00'	N 89° 51' 11" E
2	165.20'	N 0° 12' 26" W	22	165.04'	N 0° 12' 26" W
3	165.00'	S 89° 43' 33" W			
4	738.42'	N 26° 45' 06" W			
5	1,156.68'	N 0° 12' 26" W			
6	330.00'	N 89° 46' 39" E			
7	165.21'	S 0° 12' 26" E			
8	330.00'	N 89° 46' 23" E			
9	495.56'	N 0° 12' 26" W			
10	660.00'	N 89° 47' 13" E			
11	165.13'	N 0° 12' 26" W			
12	495.00'	N 89° 47' 30" E			
13	165.09'	N 0° 12' 26" W			
14	738.05'	N 63° 37' 09" W			
15	495.43'	N 0° 12' 26" W			
16	660.00'	N 89° 49' 12" E			
17	737.99'	N 26° 21' 15" E			
18	165.06'	N 0° 12' 26" W			
19	165.00'	S 89° 50' 37" W			
20	330.15'	N 0° 12' 26" W			

Book No. E-1063 Date: June 1965

CRAIG AND KEITHLINE 246  
Consulting Engineers

I, Charles R. Keithline, a Registered Professional Engineer in the State of Oklahoma, do hereby certify that the above plat is a true and accurate survey of Sec. 32 - TION - R17E, as made under my supervision.

*Charles R Keithline*  
CHARLES R. KEITHLINE  
Reg. Prof. Engr. No. 2834 (Okla.)

9,180,777