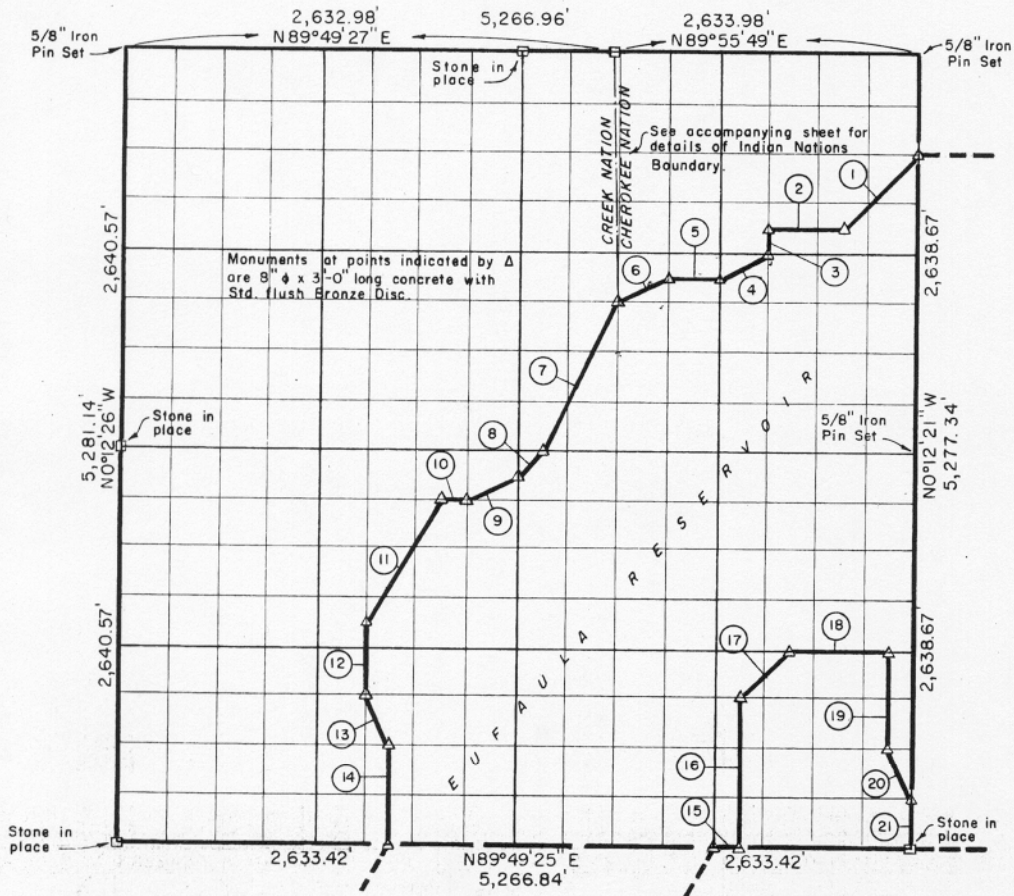


SEC. 33 - TION-R17E MCINTOSH COUNTY, OKLAHOMA



Course No.	Distance	Bearing	Course No.	Distance	Bearing
1	698.47'	S 44° 47' 03" W	21	329.83'	S 0° 12' 21" E
2	493.81'	S 89° 53' 49" W			
3	165.01'	S 0° 12' 29" E			
4	367.99'	S 63° 14' 54" W			
5	329.61'	S 89° 53' 44" W			
6	363.57'	S 62° 52' 34" W			
7	1,114.25'	S 27° 04' 54" W			
8	224.39'	S 42° 31' 06" W			
9	368.05'	S 63° 12' 46" W			
10	167.71'	S 89° 50' 40" W			
11	955.77'	S 30° 47' 46" W			
12	495.01'	S 0° 12' 34" E			
13	368.82'	S 26° 42' 57" E			
14	660.00'	S 0° 12' 34" E			
15	164.59'	N 89° 49' 25" E			
16	989.68'	N 0° 12' 30" W			
17	465.84'	N 44° 45' 23" E			
18	658.38'	N 89° 50' 02" E			
19	659.68'	S 0° 12' 23" E			
20	368.70'	S 26° 43' 07" E			

Book No. E-992 Date: February 1965

I, Charles R. Keithline, a Registered Professional Engineer in the State of Oklahoma, do hereby certify that the above plat is a true and accurate survey of Sec. 33 - TION-R17E, as made under my supervision.

10,409<sup>16</sup>

247

*Charles R. Keithline*  
 CHARLES R. KEITHLINE  
 Reg. Prof. Engr. No. 2834 (Okla.)

