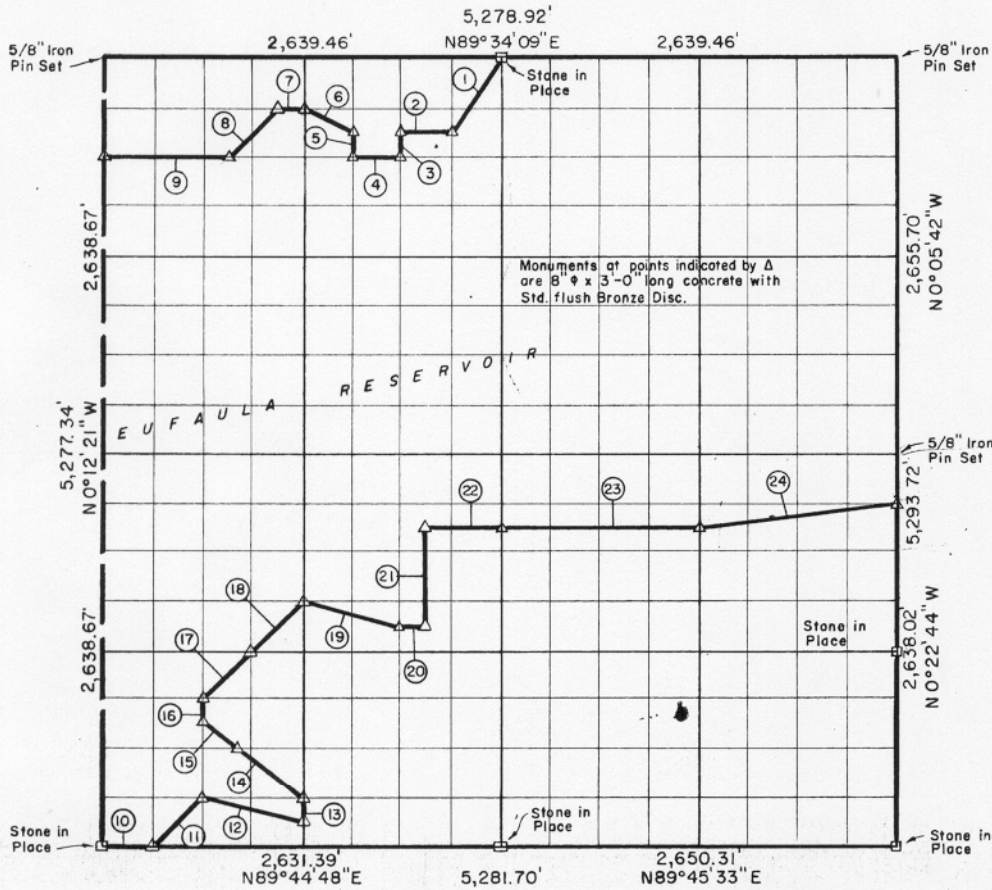


SEC. 34 - TION-R17E TOSH COUNTY, OKLAHOMA



Course No.	Distance	Bearing	Course No.	Distance	Bearing
1	596.41'	S 33° 28' 29" W	21	659.55'	N 0° 08' 06" W
2	330.00'	S 89° 34' 09" W	22	494.00'	N 89° 45' 27" E
3	165.00'	S 0° 07' 08" E	23	1,320.28'	N 89° 45' 35" E
4	330.00'	S 89° 34' 09" W	24	1,330.13'	N 82° 38' 22" E
5	165.00'	N 0° 09' 44" W			
6	367.68'	N 63° 46' 10" W			
7	165.00'	S 89° 34' 09" W			
8	466.99'	S 44° 39' 51" W			
9	825.00'	S 89° 34' 09" W			
10	328.97'	N 89° 44' 48" E			
11	466.07'	N 44° 42' 16" E			
12	678.07'	S 76° 10' 44" E			
13	164.90'	N 0° 09' 44" W			
14	547.96'	N 53° 14' 45" W			
15	274.84'	N 53° 21' 46" W			
16	164.81'	N 0° 11' 02" W			
17	466.24'	N 44° 43' 44" E			
18	466.32'	N 44° 44' 31" E			
19	678.51'	S 76° 10' 50" E			
20	164.60'	N 89° 45' 15" E			
				4,616.33	

Book No. E-991 Date: January 1965

248

I, Charles R. Keithline, a Registered Professional Engineer in the State of Oklahoma, do hereby certify that the above plat is a true and accurate survey of Sec. 34-TION-R17E as made under my supervision.

Charles R. Keithline
 CHARLES R. KEITHLINE
 Reg. Prof. Engr. No. 2834 (Okla.)

H 13.00
11613
179.587