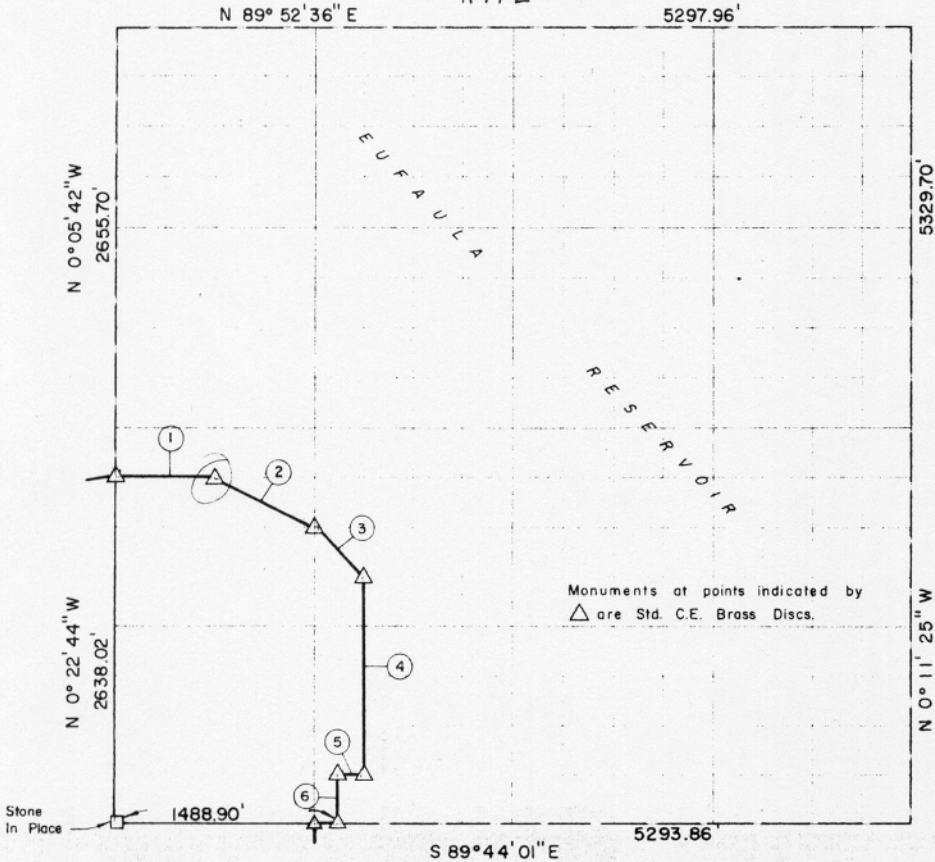


SEC. 35, TION, , PITTSBURG COUN

R 17 E



Monuments at points indicated by  $\triangle$  are Std. C.E. Brass Discs.

Course No.	Distance	Bearing	Course No.	Distance	Bearing
1	663.39'	S 89° 59' 17" E			
2	742.78'	S 63° 33' 37" E			
3	469.70'	S 45° 10' 49" E			
4	1323.20'	S 0° 16' 31" E			
5	165.49'	S 89° 46' 12" E			
6	330.69'	S 0° 17' 08" E			

3702.05

Book No E-1023

Date September, 1965

249

I, Herman E. Smith, a Registered Professional Engineer, do hereby certify that the above plot is a true and accurate survey of Sec. 35, T10N, R17E as made under my supervision.

*Herman E. Smith*  
 HERMAN E. SMITH  
 Reg. Prof. Engr. No. 1417