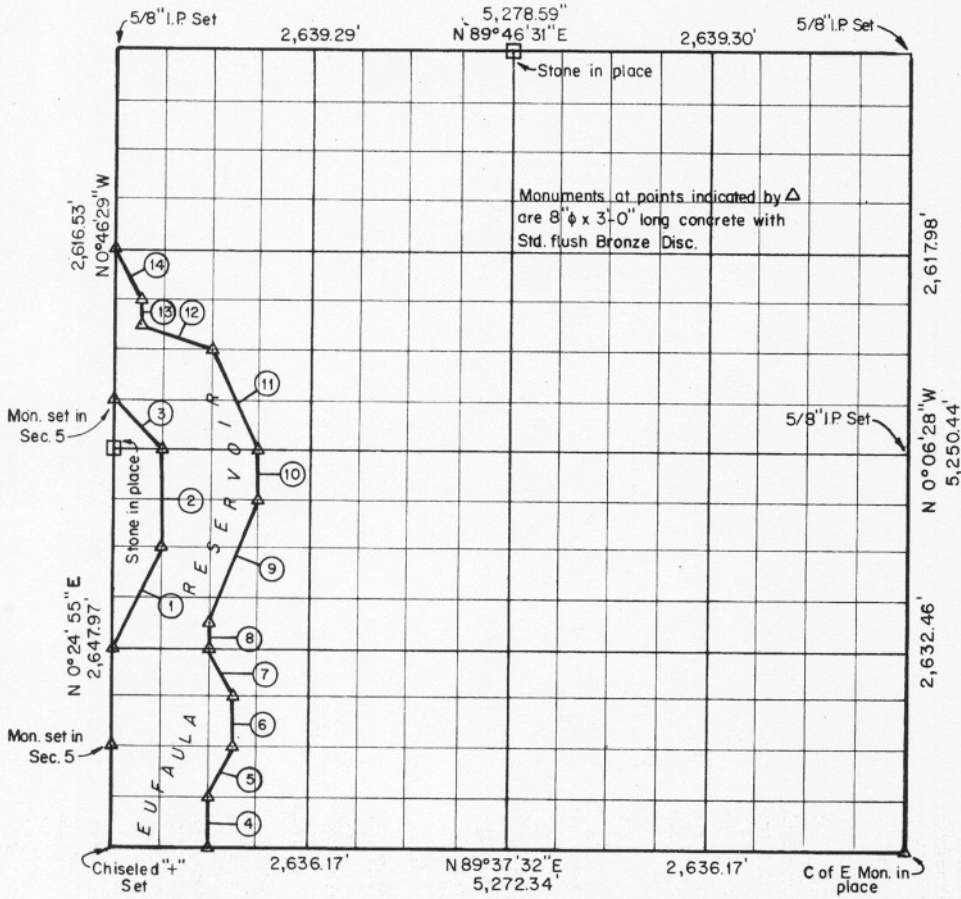


SECTION 4 TION R17E MCINTOSH COUNTY, OKLAHOMA



Course No.	Distance	Bearing	Course No.	Distance	Bearing
1	742.38'	N 26° 40' 01" E			
2	661.75'	N 0° 22' 58" E			
3	467.84'	N 45° 17' 15" W			
4	330.75'	N 0° 21' 00" E			
5	371.18'	N 26° 40' 02" E			
6	330.70'	N 0° 20' 01" E			
7	367.68'	N 26° 13' 17" W			
8	165.38'	N 0° 21' 00" E			
9	892.17'	N 21° 55' 07" E			
10	330.64'	N 0° 19' 02" E			
11	739.86'	N 27° 00' 23" W			
12	521.23'	N 71° 42' 22" W			
13	165.16'	N 0° 45' 13" W			
14	370.56'	N 27° 06' 08" W			

Book No. E-1056 Date: June 1965

6,457.25 ✓

I, Charles R. Keithline, a Registered Professional Engineer in the State of Oklahoma, do hereby certify that the above plat is a true and accurate survey of Sec. 4 - TION-R17E, as made under my supervision.

CRAIG AND KEITHLINE 171  
Consulting Engineers

*Charles R. Keithline*  
CHARLES R. KEITHLINE  
Reg. Prof. Engr. No. 2834 (Okla.)