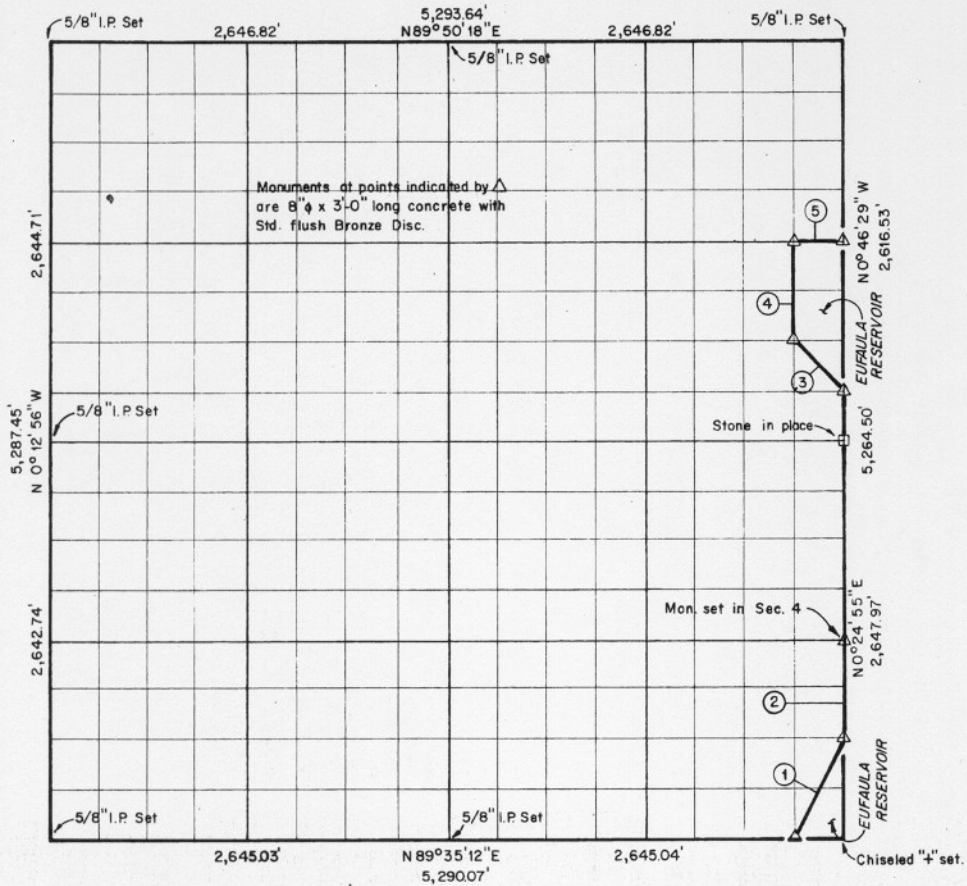


SECTION 5 T10N R17E Mc... COUNTY, OKLAHOMA



Course No.	Distance	Bearing	Course No.	Distance	Bearing
1	744.24'	N 26° 47' 14" E			
2	662.00'	N 0° 24' 55" E			
3	469.59'	N 45° 45' 27" W			
4	660.74'	N 0° 44' 24" W			
5	331.46'	N 89° 31' 52" E			
	2868.03				

Book No. E-1057 Date: June 1965

I, Charles R. Keithline, a Registered Professional Engineer in the State of Oklahoma, do hereby certify that the above plat is a true and accurate survey of Sec. 5 - T10N R17E, as made under my supervision.

CRAIG AND KEITHLINE 170
Consulting Engineers

Charles R Keithline
CHARLES R. KEITHLINE
Reg. Prof. Engr. No. 2834 (Okla.)

2868.03