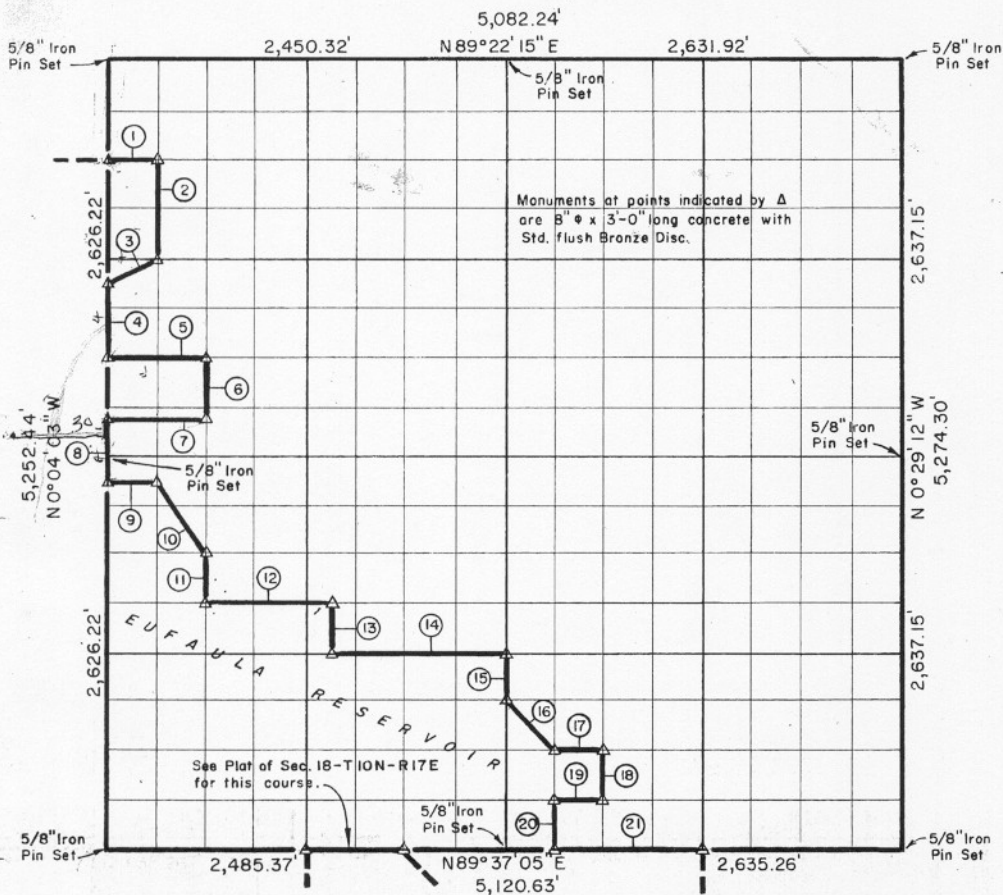


SEC. 7 - TION-R17E - MCINTOSH COUNTY, OKLAHOMA



Course No.	Distance	Bearing	Course No.	Distance	Bearing
1	299.52'	N 89° 23' 52" E	21	988.22'	N 89° 37' 05" E
2	656.70'	S 0° 04' 49" E			
3	345.15'	S 60° 10' 51" W			
4	487.74'	S 0° 04' 03" E			
5	486.88'	N 89° 28' 26" E			
6	410.47'	S 0° 25' 56" E			
7	489.47'	S 89° 28' 36" W			
8	410.43'	S 0° 04' 03" E			
9	162.09'	N 89° 28' 40" E			
10	592.47'	S 34° 16' 51" E			
11	328.58'	S 0° 25' 56" E			
12	824.64'	N 89° 32' 47" E			
13	328.62'	S 0° 26' 10" E			
14	1,152.56'	N 89° 33' 25" E			
15	328.94'	S 0° 27' 01" E			
16	465.61'	S 45° 28' 17" E			
17	329.36'	N 89° 35' 00" E			
18	329.11'	S 0° 27' 33" E			
19	329.38'	S 89° 36' 02" W			
20	329.02'	S 0° 27' 17" E			
				19,084.96	

Book No. E-983 Date: November 1964

I, Charles R. Keithline, a Registered Professional Engineer in the State of Oklahoma, do hereby certify that the above plat is a true and accurate survey of Sec. 7-TION-R17E as made under my supervision.

185  
 Charles R. Keithline  
 CHARLES R. KEITHLINE  
 Reg. Prof. Engr. No. 2834 (Okla.)