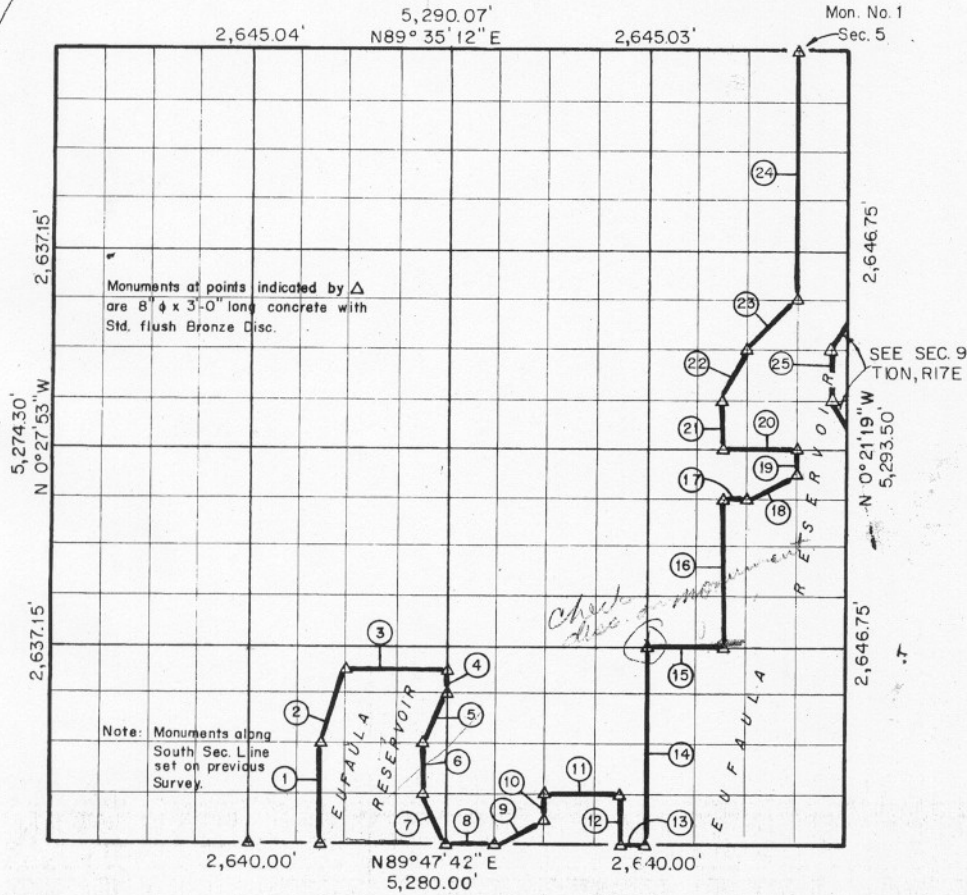


SEC. 8 - TION-R17 E McINTOSH COUNTY, OKLAHOMA



Course No.	Distance	Bearing	Course No.	Distance	Bearing
1	660.12'	N 0° 25' 38" W	21	330.66'	N 0° 22' 21" W
2	521.40'	N 18° 01' 47" E	22	369.54'	N 26° 10' 56" E
3	660.28'	N 89° 44' 58" E	23	467.40'	N 44° 37' 04" E
4	165.12'	S 0° 24' 36" E	24	1,653.85'	N 0° 21' 44" W
5	368.75'	S 26° 10' 48" W	25	329.90'	N 0° 31' 34" W
6	330.21'	S 0° 24' 48" E			
7	369.67'	S 26° 55' 19" E			
8	330.00'	N 89° 47' 42" E			
9	368.55'	N 63° 09' 50" E			
10	165.20'	N 0° 23' 47" W			
11	495.06'	N 89° 46' 55" E			
12	330.51'	S 0° 23' 10" E			
13	165.00'	N 89° 47' 22" E			
14	1,322.18'	N 0° 22' 58" W			
15	495.24'	N 89° 44' 35" E			
16	991.98'	N 0° 22' 21" W			
17	165.14'	N 89° 42' 14" E			
18	369.22'	N 63° 05' 27" E			
19	165.39'	N 0° 21' 44" W			
20	495.48'	S 89° 41' 27" W			

Book No. E-1058 Date: June 1966

I, Charles R. Keithline, a Registered Professional Engineer in the State of Oklahoma, do hereby certify that the above plat is a true and accurate survey of Sec. 8 - TION-R17 E, as made under my supervision.

CRAIG AND KEITHLINE 186
 Consulting Engineers
Charles R. Keithline
 CHARLES R. KEITHLINE
 Reg. Prof. Engr. No. 2834 (Okla.)