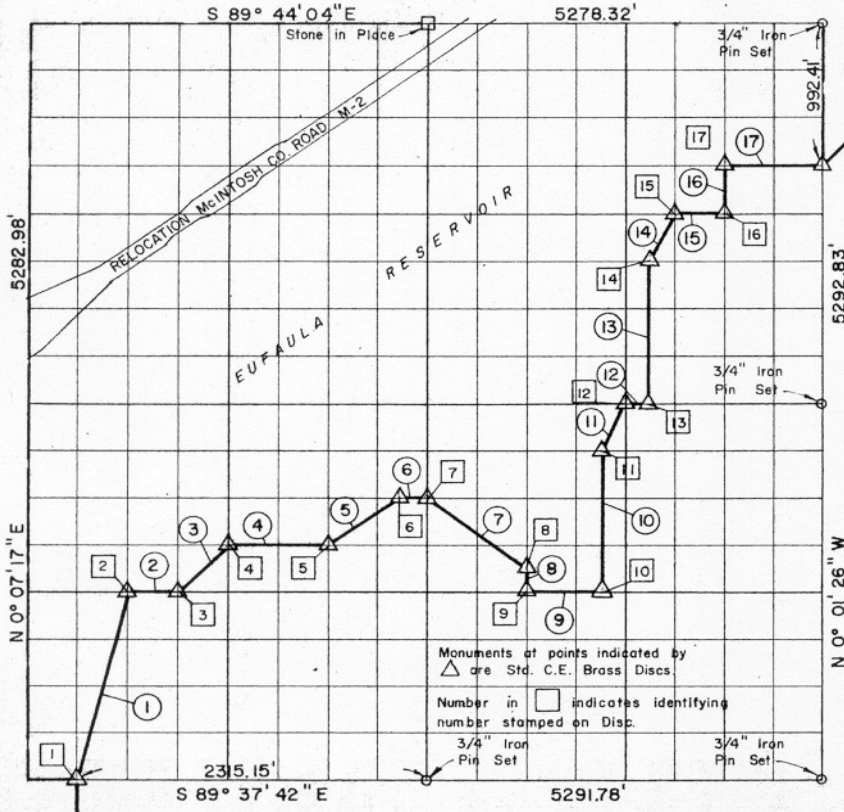


SEC. 10 , T10 N, R 18 E, McINTOSH COUNTY



Course No.	Distance	Bearing	Course No.	Distance	Bearing
1	1360.33'	N 14° 10' 28" E	17	660.10'	S 89° 42' 53" E
2	330.53'	S 89° 39' 18" E			
3	466.24'	N 45° 13' 52" E			
4	660.95'	S 89° 39' 42" E			
5	594.40'	N 56° 33' 38" E			
6	165.21'	S 89° 40' 05" E			
7	828.26'	S 52° 53' 36" E			
8	165.29'	S 0° 01' 50" W			
9	495.79'	S 89° 39' 18" E			
10	991.89'	N 0° 01' 01" E			
11	368.80'	N 26° 37' 12" E			
12	165.16'	S 89° 40' 53" E			
13	992.00'	N 0° 00' 29" E			
14	368.84'	N 26° 35' 27" E			
15	330.10'	S 89° 42' 29" E			
16	330.72'	N 0° 00' 21" W			

Book No. E-1007

Date: February, 1965

191

I, Herman E. Smith, a Registered Professional Engineer, do hereby certify that the above plat is a true and accurate survey of Sec. 10, T10 N, R18 E as made under my supervision.

Herman E. Smith
HERMAN E. SMITH
Reg. Prof. Engr. No. 1417